

 **Southern Cross University**

University Council Graduate Member

Candidate information





**Southern Cross
University**

Contents

A message from the Chancellor and Vice-Chancellor..... 3

About us..... 4

Our campuses 5

Our faculties and colleges 7

The Southern Cross Model..... 9

Our responsibility and accountability 10

University Council Member 11

About the opportunity..... 12



**Times
Higher
Education**

Top 500 universities worldwide
World University Rankings 2026



5-star Student Support in
five study areas



Rated 5-stars (2025)



Above national median for
domestic undergraduate
and postgraduate full-time
employment
(Graduate Outcomes Survey 2024)





**Southern Cross
University**



A message from the Chancellor and Vice-Chancellor

Southern Cross University is deeply connected with the regions we call home, with a distinctive mission that places students and communities at the centre of our future.

Australia's universities are being disrupted by a confluence of social, economic, policy and technological forces calling for enormous acuity, agility, creativity, and transformation.

In anticipation of this landscape Southern Cross University has developed its ambitious 2030 strategy, a roadmap to our future deeply rooted in a sense of purpose and energised by our values of excellence, boldness, ownership, care, and trust.

We aim to change the lives of those who study with us through a revolutionary approach to learning. Consistent with this, our Southern Cross Model, unique to the Australian University sector, is generating significant improvements in student learning outcomes and success compared to those generated by our more conventional past approaches.

Our work in research is informed through the lens of impact and engagement as we seek to enhance the lives and livelihoods of those for and with whom we collaborate. It is this passion that fuels our continued development and innovation.

We are proud to contribute to the vitality of the regions we call home, but our gaze is to the best talent and the best practice wherever it exists.

Our University Council is committed to working with the Vice-Chancellor and his team in providing the appropriate level of robust governance and support central to delivering our ambitious agenda.

On behalf of the Council of the University, we welcome your interest in joining the Southern Cross University community as a Graduate member of Council.



Professor Tyrone Carlin
Vice-Chancellor

Sandra McPhee AM
Chancellor



About us

First operating as the Lismore College of Advanced Education, then as the Northern Rivers College of Advanced Education and as part of the University of New England (1989–1993), we became an independent institution under the Southern Cross University Act in 1993. Since then, we've grown into a confident, modern university that continues to serve our regions and extend our reach globally.

Our campuses stretch along Australia's east coast, from the Gold Coast and Northern Rivers to Coffs Harbour. The University's National Marine Science Centre is located near the Coffs Harbour campus and we have metro campuses in Sydney, Melbourne, Brisbane and Perth. We work closely with education and research partners across Asia and the Pacific and around the world.

Today, we serve more than 20,000 students across diverse backgrounds, and nearly a third of our undergraduates are the first in their family to attend university.

What's the Southern Cross difference?

Southern Cross University is bold, ambitious, and deeply connected to our communities. We're ranked in the world's Top 100 Young Universities (Times Higher Education Young University Rankings 2024), and globally recognised in the top 650 institutions in the QS World University Rankings 2026. Our graduates are among the most employable in Australia (QILT Graduate Outcomes Survey 2024).

Our revolutionary teaching model – the Southern Cross Model – reimagines how students learn. Delivered in immersive six-week blocks, it has dramatically improved student success and retention. In 2025, more than 90 per cent of students successfully completed their units, achieving higher grades and reporting greater satisfaction in their studies.

We are a research university with purpose. From zero-waste innovation to oyster reef restoration and agricultural innovation, our researchers work with industry, government and communities to tackle complex, real-world problems with our reef restoration work recently featured in The New York Times. We attract significant research income with purpose-built facilities and laboratories that position us to invest in a future that is as ambitious as our past.

Through programs in areas like education and health, we help build the workforces that serve everyday Australians. Many of our graduates choose to stay and work locally, contributing directly to the wellbeing and resilience of the regions they call home. Through floods and fires to long-term recovery, we've stood shoulder to shoulder with the regions we serve, a reflection of our commitment to the places we live, work and learn alongside.

At Southern Cross, we are united by values and driven by impact. As a member of University Council, you'll join a leadership community committed to doing more and doing it boldly.

Our campuses

Southern Cross is a multi-campus university on Australia's east coast with main campuses at the Gold Coast in Queensland, in the Northern Rivers and at Coffs Harbour in New South Wales.

The regions we call home all have unique characteristics as study locations – from cosmopolitan cities, thriving industries and coastal lifestyles to living laboratories of great natural beauty and ecological diversity within easy reach of the campus.

3

Main campuses

4

Metro campuses

20,000+

Student

- Main campus
- Metro campus



Main Campuses
Gold Coast,
Northern Rivers,
Coffs Harbour

Metro Campuses
Brisbane, Sydney,
Melbourne, Perth

Our campuses



Gold Coast campus

Located at Coolangatta, our Gold Coast campus sits adjacent to the airport and within walking distance of stunning beaches. Three contemporary buildings house modern learning spaces, health science laboratories, lecture theatres with live streaming, computer labs and student lounges. Students benefit from extensive work and placement opportunities in the region's medical, leisure and service industries. The Digital Enterprise Lab enables students to develop innovative IT solutions, while the on-campus Health Clinic offers supervised clinical experience. Programs include a wide range of health disciplines, IT, law, business, psychology, engineering, and education.

📍 [Southern Cross Drive, Bilinga QLD 4225](#)

Lismore campus

Set in a beautiful rainforest, our Lismore campus is home to state-of-the-art engineering and environmental science facilities including laboratories for concrete stress testing, hydraulic modeling, 3D printing and interactive multimedia. World-class health facilities feature specialist labs, simulated hospital wards, and clinical experience through the on-campus Health Clinic. Programs include education, science and engineering, naturopathy, nursing and osteopathy, environmental science and veterinary studies, as well as Indigenous knowledge through Gnibi College of Indigenous Australian Peoples.

The campus houses research headquarters, Learning Centre, heated pool, gym, student accommodation, research apiary and a Koala Hospital.

📍 [Military Road, East Lismore NSW 2480](#)



Coffs Harbour campus

The University is part of an education precinct in Coffs Harbour, co-located with TAFE NSW, a senior high school, and an Innovation Hub.

Discipline-specific health facilities include laboratories, a birthing suite and advanced movement lab. Programs offered at the Coffs Harbour campus include education, clinical exercise physiology, occupational therapy, speech pathology, sport and exercise science, midwifery, nursing, physiotherapy, psychology and marine science at the National Marine Science Centre, located on the northern side of the city.

📍 [Hogbin Drive, Coffs Harbour NSW 2450](#)

Metro campuses and The Hotel School

The University has four metro locations in Sydney, Melbourne, Brisbane and Perth. These locations also house the University's Hotel School, a flagship institution offering courses in hotel management and leadership.

Metropolitan campuses in each city's CBD provide students with exceptional living and learning experiences, offering comprehensive undergraduate and postgraduate programs.

The Hotel School delivers courses in Tourism, Hotel Management, Hospitality and Events. With industry-designed programs, students become future leaders in this global sector through practical, industry-relevant education.

📍 [Brisbane, Sydney, Melbourne and Perth](#)

Our faculties and colleges

Principal teaching areas

Southern Cross University delivers courses through four Faculties and two Colleges:

Faculty of Business, Law and Arts scu.edu.au/business-law-and-arts

Faculty of Education scu.edu.au/education

Faculty of Health scu.edu.au/health

Faculty of Science and Engineering scu.edu.au/science-and-engineering

SCU College scucollege.scu.edu.au

Gnibi College of Indigenous Australian Peoples scu.edu.au/gnibi



Our purpose

Changing lives through revolutionary learning and research with real impact

Our values

We strive for excellence

We apply the highest standards. We're always seeking to be at our best

We are bold

We're ambitious. We're dynamic. We make bold decisions.

We care

We care for our people. We champion our communities. We respect our planet.

We own it

When we commit, we keep our word. When we fail, we learn.

We build trust through action

We tell the truth. We do what's right.

Our people

At Southern Cross University, our purpose and values are more than guiding principles—they're a promise. A promise to do things differently, so that our people can too. It's this promise that shapes a culture unlike any other, one that draws people in and inspires them to build something new and meaningful—together.

We offer more than just trust and care. We break this down into three foundational commitments:

Be Bold

Find the freedom to think differently, to challenge norms, and to pursue excellence and equity with courage.

Belong

Connect deeply with people, communities, and places—each as unique as you are.

Be More

Embrace real opportunities for impact, for communities, the world, and yourself.

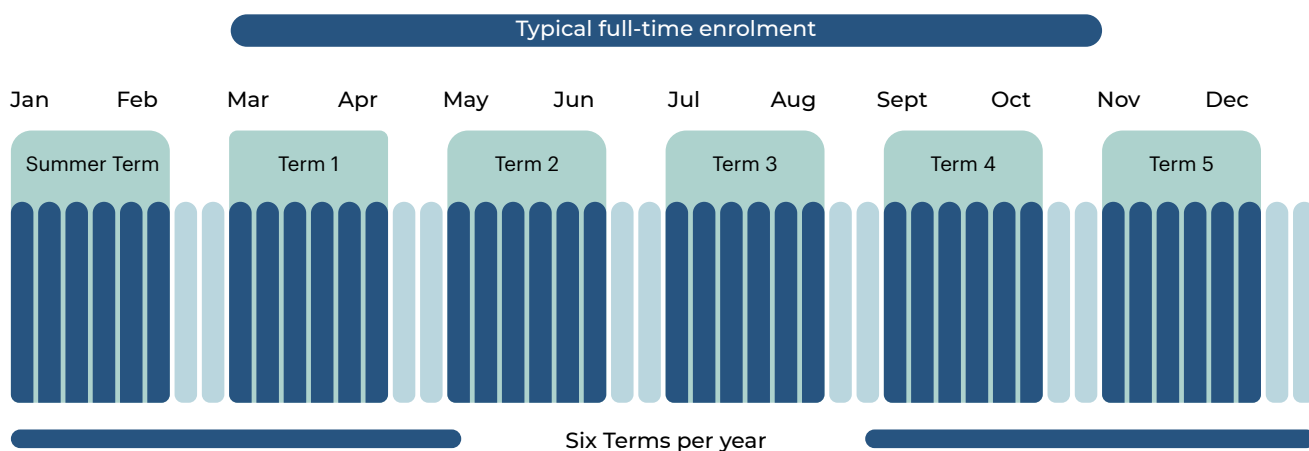
No matter your role—professional, academic, Council member, community or industry partner - you'll find the opportunity to genuinely make a difference. These aren't just words. They were created with our people, for our people. Because we know that when the right people come together, we can go much further.

The Southern Cross Model

The Southern Cross Model is an innovative approach to tertiary education that delivers a deeper, more engaged learning experience centered on greater interactivity and connection with real-world applications. It empowers students to take greater control in shaping how they study across the year, enabling them to adapt the structure of their study to fit with other work and life commitments.

How does it work?

- Six terms of six teaching weeks each
- Students can complete one or two units per term
- A minimum of six units and a maximum of 12 units per year in a full-time study load
- Students can take a term off when they need to, or choose to do more study
- Students can enrol in a maximum of 2 units per term
- The standard full-time study load is 8 units over 4 terms per year
- Students submit 2-3 assessments per unit
- Some units may have assessment in Week 7



More students succeed

Student success under the Southern Cross Model has increased by 17% (Pass rate 2019-2025)

More students thrive

(0.6 increase in average GPA 2019-2025)

More students enjoy their studies

(9% increase in student satisfaction 2019-2025)

"No matter your background, if you're bright and you want to make a difference and be more and do more, then we've got a particular way of teaching and learning that we think really allows you as a student to succeed. I love hearing students say they enjoy learning in the Southern Cross Model, and to see them walking across the stage at graduation. Hearing their stories of success is what it's all about."

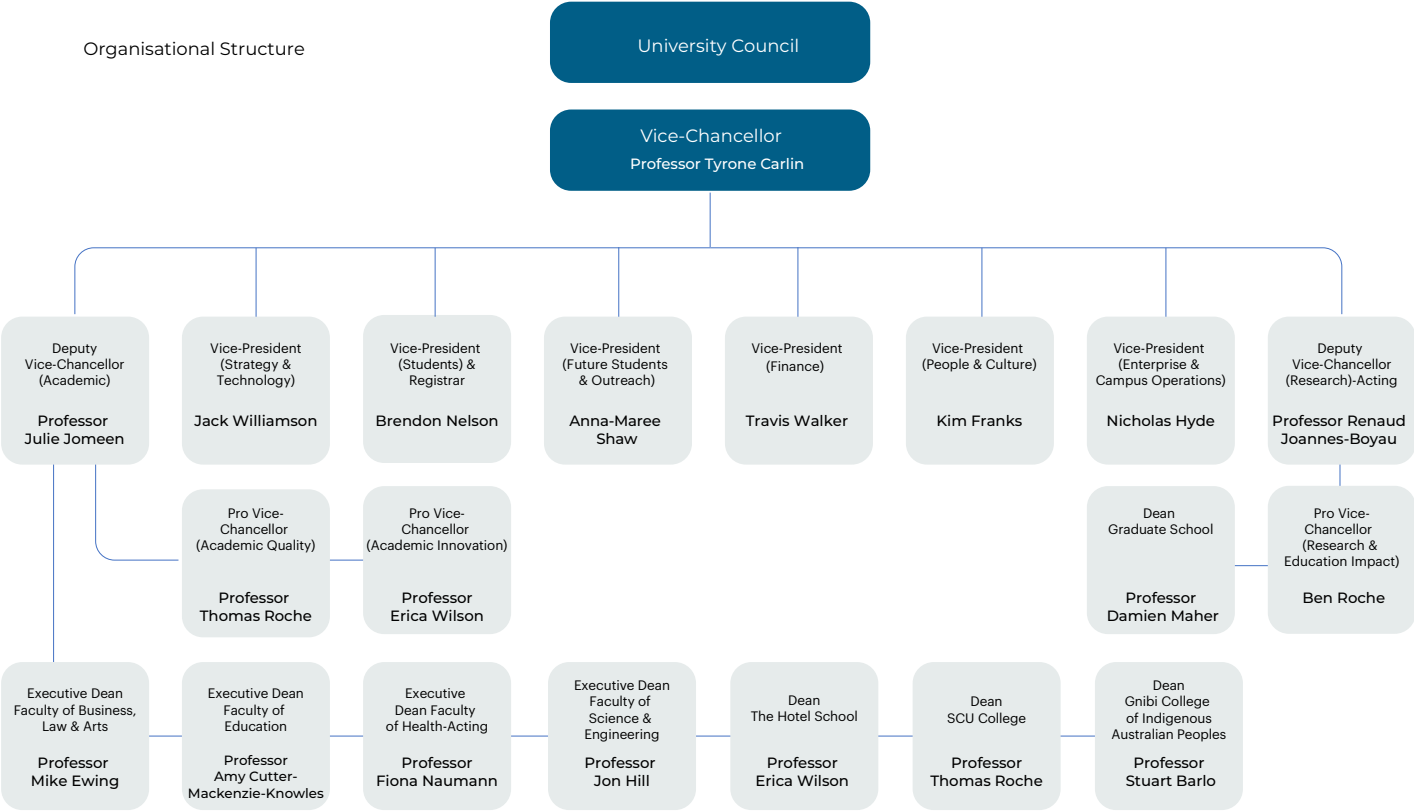
Erica Wilson

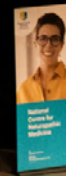
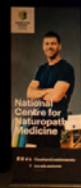
BAdmin(Tourism)(Hons)(JCU), GradDip(EnvStud)(Adel), PhD(Griff)
Pro Vice-Chancellor (Academic Innovation) and the co-creator of our innovative Southern Cross Model.



Our responsibility and accountability

To oversee functional and accountable governance, University work units are organised around Executive leads for key thematic areas of operations: Research, Students, Engagement, Finance, and Operations, Academic Innovation, Academic Quality, Strategy, People and Culture. Each has a portfolio work plan to align with the objectives, and ultimately deliver the strategic goal.





University Council Graduate Member

Southern Cross University Council is the governing authority of the University and is responsible for oversight of the University's affairs under the *Southern Cross University Act 1993 (NSW)* (the Act).

The Council is chaired by the Chancellor and has 14 members:

- the Chancellor
- the Vice-Chancellor
- the Chair of Academic Board
- two members appointed by the NSW Minister responsible for Higher Education
- five external members appointed by Council, including one member who is a graduate of the University
- three elected staff members, and
- one elected student member.

Council Committees:

- Finance and Investment Committee
- Audit and Risk Management Committee
- People and Culture Committee
- Digital Transformation Committee



About the opportunity

Southern Cross University is powered by passion to deliver the best learning, teaching and research possible. Our graduates stride a global stage with confidence as proud alumni. To enable Southern Cross University to continue to thrive, we require an evolving and continually refreshed Council—one that reflects the dynamic nature of the University and the changing needs of the communities we serve.

We create and apply knowledge in partnership with our communities in fields that are regionally relevant and globally significant. Our people go above and beyond, working with energy and empathy alongside their colleagues to achieve the best outcomes for the student and the University.

Eligibility for Nomination:

To be eligible to be appointed as a Graduate Member of Council, the nominee:

1. Must be a graduate of Southern Cross University or one of its predecessor institutions*;
2. The nomination must be supported by two graduates of Southern Cross University or its predecessor institutions; and
3. Cannot be a current University student or Staff member (in any capacity).

**Southern Cross University predecessor institutions include The University of New England Northern Rivers, Northern Rivers College of Advanced Education, and Lismore Teacher's College.*

The primary responsibilities of Council Members include:

- Supporting a positive and inclusive University culture aligned with the strategic plan
- Endorsing the University's mission and strategic direction
- Supporting the translation of the University's values, vision and goals into effective management practices
- Monitoring progress towards the University's mission and strategic objectives
- Providing oversight and guidance on the University's overall management performance
- Reviewing and approving the University's annual budget and business plan
- Supporting and monitoring academic governance and related activities
- Providing oversight of risk management and assessment across the University, including commercial activities
- Approving and monitoring systems of control, reporting and accountability, including oversight of controlled entities, joint ventures and partnerships
- Establishing policy and procedural principles that reflect legislative requirements and community expectations
- Assessing compliance with relevant regulatory and legislative obligations
- Appointing, supporting, and reviewing the performance of the Vice-Chancellor, including determining remuneration



General capability and personal attributes

Council members possess a range of expertise in the fields of higher education, legal, financial management, risk management, strategic planning, technology, business acumen, marketing and communication.

Ideally, Council Members will possess all or most of the following attributes:

- A clear understanding and enthusiasm for the role of universities in society and the special nature of regional universities
- A person of good standing, vision, and excellent character, well respected by the community, colleagues, and peers
- Demonstrated leadership skills, preferably exercised within a medium to large public or private sector organisation
- Experience in corporate or institutional strategic planning, governance and financial management
- Excellent interpersonal and communication skills – the ability to work well in a group, listen well, be confident to communicate a point of view frankly and respectfully
- An experienced board member, fully conversant with meeting procedure and protocol
- Demonstrated ability to interrogate and critically analyse a wide range of information, strong intellectual curiosity and good judgement
- Integrity and high ethical standards with the ability to act in the best interest of the University as a whole.

It is preferable that appointees reside in the regions in which the University's campuses are located.

Time commitment

- Council members are typically appointed for a four-year period and may be eligible for reappointment
- Council holds five meetings throughout the year, in addition to a full strategy day
- Preparation time for Council meetings requires a minimum of a half-day's reading time in advance of the meeting
- Council members may be asked to participate in one or more subcommittees of Council. Committees meet at least four times per year.

Probity and conduct

If appointed, you will be required to undertake pre-appointment checks, including:

- A Fit and Proper Person Declaration
- National Police Records Check
- Australian Financial Security Authority (AGSA)
- National Personal Insolvency Index (NPII) check, and
- Australian Securities and Investment Commission (ASIC) Register of Persons Banned and Disqualified.

If appointed, you will also be required to:

- Declare all material personal interests
- Keep confidential all information provided to you in your role on Council
- Undertake an induction program on your duties and responsibility as a Council member and the operation of the University
- Devote sufficient time to prepare for Council/Committee meetings.



Remuneration

All Council member appointments are voluntary and are not remunerated. However, members' reasonable costs associated with Council duties are met by the University.

Diversity

Southern Cross University is committed to ensuring that the Council reflects the rich diversity across the region in which the University's campuses are located. Diversity of skills and expertise, and the perspectives and lived experiences of people from different backgrounds, contribute to good governance and assist Council to make decisions in the interests of our community.

The University encourages applications from people of all ages, women, Aboriginal & Torres Strait Islander people, people living with disabilities, people from culturally and linguistically diverse backgrounds and people who openly identify as LGBTQI+.

Application and selection process

To submit an application for this role, please complete and return the Graduate Member of Council Nomination form together with the following information in Microsoft Word format:

- A comprehensive curriculum vitae detailing professional qualifications, full employment history and any other relevant information, such as involvement in professionally relevant activities
- A brief expression of interest which outlines your motivations for applying and how your skills, expertise and background will contribute to the aims of Southern Cross University
- Two referees including their email and phone contact details. Referees will only be contacted after prior consultation with the candidate
- An indication of the earliest date on which you could commence in the position.

Support for your application

For a confidential discussion, please contact

Courtenay Atwell

Korn Ferry

E: scucouncil@kornferry.com