



**Southern Cross
University**

EAL Environmental
Analysis
Laboratory



Analytical Services

Full analytical services price list

Edition: 20.1.3

Refer to our website for additional section
Price Lists scu.edu.au/eal



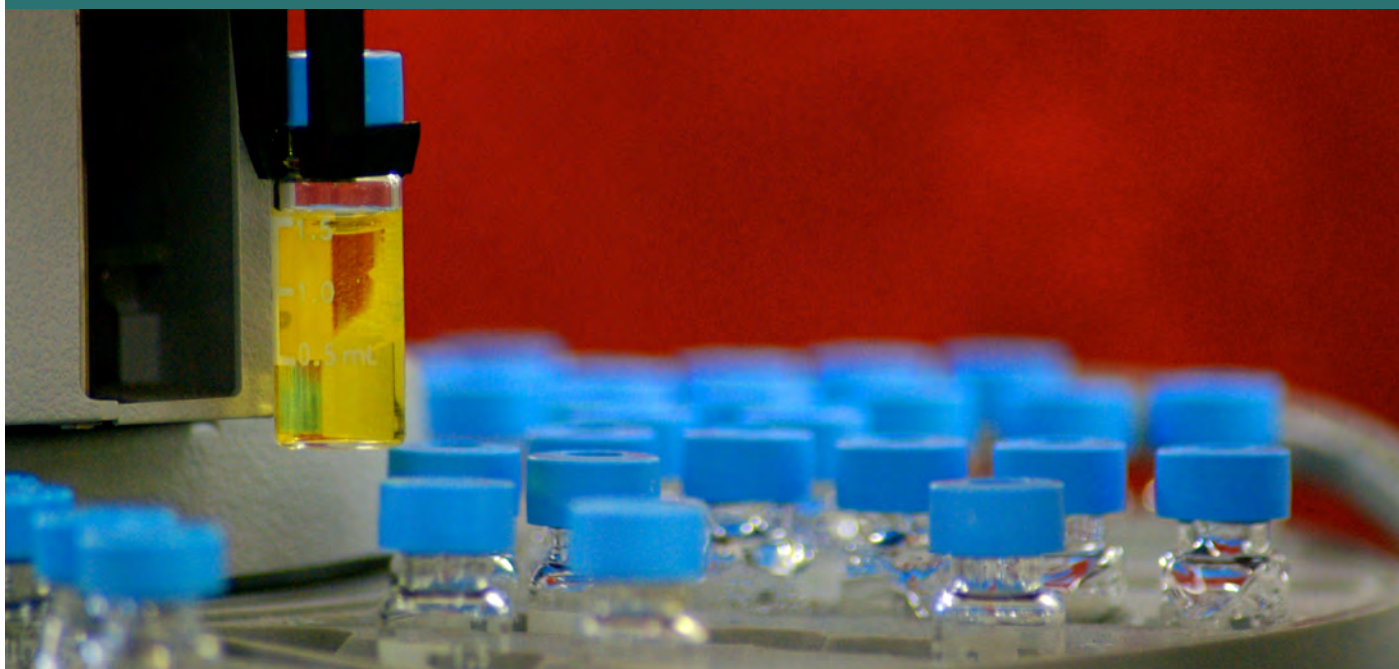


Table of contents		Page	Page
Environmental Analysis Laboratory (EAL) introduction	3	Fertiliser suites	24
Important notes	3	Individual fertiliser tests	25
Confidentiality and quality assurance	3	Plant tissue and grain suites	26
Instructions for submitting samples	3	Individual plant tissue and grain tests	26
Complete EAL Sample Submission Form (SSF)	4	Feed suites	27
Package and send samples	4	Individual feed suites	27
EAL contact details	4	Produce suites	27
Terms and conditions	4	Individual produce suites	28
Water testing	5	Compost suites	29
Specific water suites	5	Biochar suites	29
Water preparations	7	Hair suites	29
Metal suites	7	Agricultural water suites	30
Individual metal tests	9	Individual agricultural water tests	30
Residue water suites	10	Compost and landscape soil testing	31
Individual residue tests	10	AS4454 compost product suites	31
Individual microbial tests	11	AS4454 compost basic suites	31
Individual nitrogen tests	11	Basic compost suites	32
Individual general tests	12	Other compost suites	32
Acid sulfate soil and rock testing	14	Individual compost tests	33
Soil suites	14	AS3743 potting mix product suites	35
Soil preparations	15	AS3743 potting mix basic suites	35
Individual soil tests	15	Individual potting mix tests	35
Rock suites	17	AS4419:2018 soil suites	37
Rock preparations	17	AS4419:2003 soil suites	38
Individual rock tests	17	AS4419 soil basic suites	38
Water suites	18	Other soil suites	38
Agricultural testing	19	Individual soil tests	39
Routine soil tests	19	MRTS soil suites	41
Other soil suites	20	MRTS water suites	42
Individual soil tests	21	R178 soil suites	42
Soil carbon suites	23	Other soil suites	43
Individual soil carbon tests	23	Individual soil tests	43

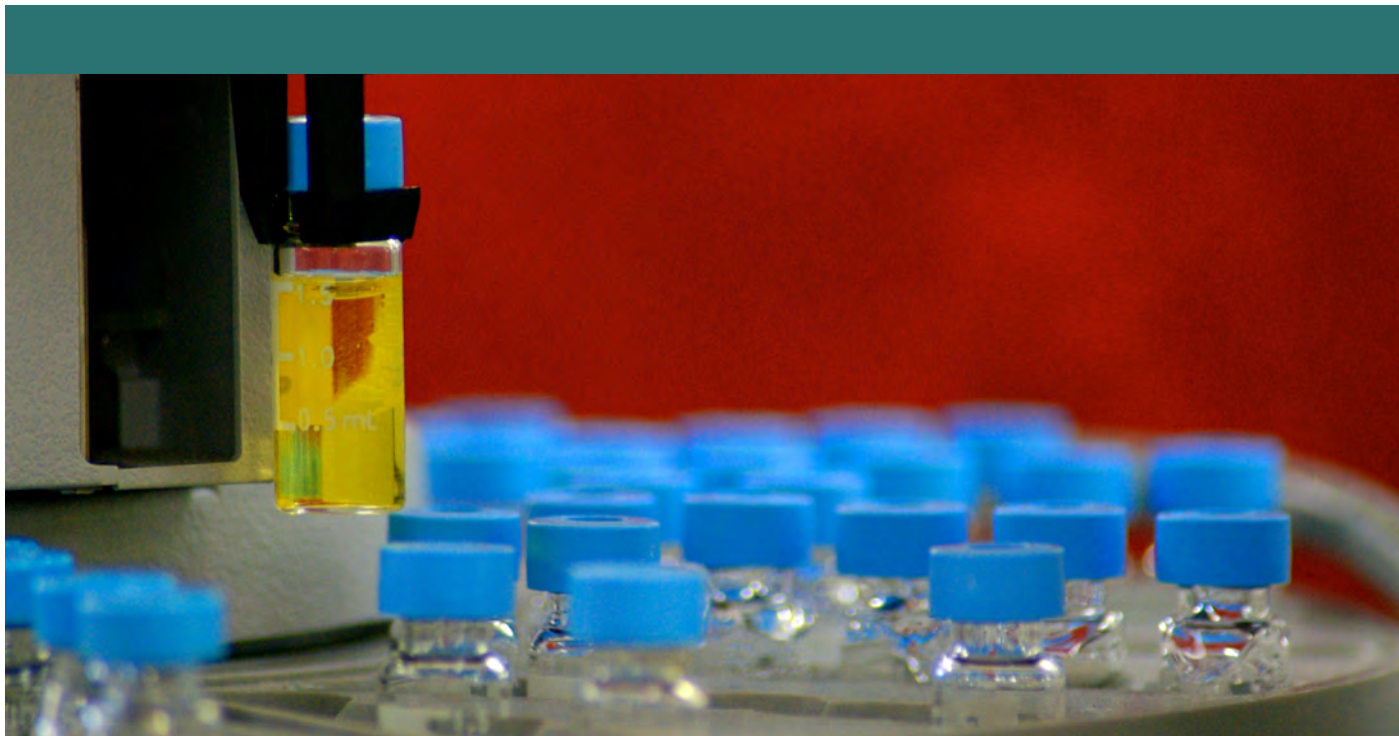


Table of contents		Page	Page
Compost testing continued	45	Individual solids tests	65
Contamination suites	45	Biosolid suites	67
Individual contamination tests	45	Carbon suites	67
Microbial suites	46	Individual carbon tests	67
Individual microbial tests	46	Exchangeable cations suites	68
Biochar suites	47	Metals suites	69
Bioretention filter media suites	47	Individual metals tests	70
Individual bioretention filter media tests	47	Microbial suites	71
Biosolid suites	47	Individual microbial tests	71
Contamination assessment testing	49	Nitrogen suites	71
Specific soil suites	49	Individual nitrogen tests	71
Residue soil suites	50	Phosphorous suites	72
Metal soil suites	51	Individual phosphorous tests	72
Soil preparations	51	Individual stable isotope tests	73
Individual soil tests	52	NATA accredited tests	74
Specific water suites	54	ASPAC accredited tests	74
Residue water suites	54		
Metal water suites	55		
Water preparation	55		
Individual water tests	56		
Physical parameters testing	58		
Physical parameter suites	58		
Particle size tests	58		
Dispersion and aggregation tests	59		
Water holding and permeability tests	60		
Moisture content tests	61		
Bulk density tests	62		
Colour and texture	62		
Physical contaminants tests	62		
General solids testing	63		
Solids suites	63		
Solids preparations	64		

Full analytical services price list

The Environmental Analysis Laboratory (EAL) is part of Southern Cross University and is set up as a commercial, teaching and research facility. EAL specialises in a range of environmental testing services for waters, acid sulfate soils, agricultural soils, composts, potting mixes, landscape soils, plants and for effluent monitoring.

EAL employs over 40 professional staff and utilises the following instruments: Perkin Elmer ICPOES 8300DV; Perkin Elmer ICPOES Avio500; NexION 2000B ICPMS; NexION 300D ICPMS; NexION 350D ICPMS with FLEXAR HPLC; LECO SC832 CS Analyser; LECO TruMac CNS Analyser; CRS Analysers; Lachat FIA Nutrient Analysers; Smartchem Nutrient Analyser; Soxtherm Oils and Grease Analysers;

Bruker XRD; Leica SEM with EDAX; Hitachi desktop SEM with EDAX; Pan-analytical XRF; Malvern Mastersizer 3000LV/SM and Hydro2000MU Laser Diffraction Particle Size Analysers; Waters Ion Chromatography system; Shumatsu TOC/TN Analyser; Thermo-Finnigan IRMS; NewWave Laser Ablation System with Agilent ICPMS; Mantech AutoMax 197 pH/EC Analyser.

Specialists in the School of Environment, Science and Engineering, and Cooperative Research Centres, can also provide complete sampling, data interpretation and report production services. This includes specialists in soil science, geology, geochemistry, plant and fisheries biology, palaeontology, hydrology, marine biology and ecology.

Important notes on charges, turnaround times and results

The following points apply to sample analysis:

- Sample specific quotes can be negotiated and customised at competitive rates on request
- Payment is requested on delivery of samples (cash, eftpos, cheque). Invoices are available to regular clients. Minimum invoice amount is required
- Sub-contracted analyses are sent to approved laboratories
- On-site sample collection by qualified staff is available at a basic rate of \$110.00 +GST per hour
- Turn-around times for individual projects vary depending on the size and complexity of the task; most are completed within five to ten working days of receiving samples
- URGENT turn-around times (TAT) are available on request for selected tests. These incur 100% surcharge for one working day, 50% for two, 25% for three and 12.5% for four working days service (note samples must arrive at the laboratory by noon to ensure these TAT)
- Results are supplied in Excel and PDF report format. They detail the analytical results in relation to standard guidelines, where available
- Sample Receipt Notices, Results and Invoices are supplied by email and may be posted if requested.

Confidentiality and quality assurance

Confidentiality is an integral part of our quality assurance certification. Results will not be released to a third party without written client consent.

Strict quality control procedures are applied to all chemical, physical and bacteriological analyses. This involves frequent use of replicates to monitor precision, with standard reference materials and blanks to monitor accuracy.

The laboratory is also routinely involved in inter-laboratory comparisons and trials, including the Australian Standards National Low Level Nutrient Collaborative Trials (NLLNCT) program. EAL is a member of ASPAC (Australian Soil and Plant Analysis Council) which includes a regular Quality Assurance Program for soils and plants. EAL also assists in the formulation of suitable laboratory methods for acid sulfate soil analysis.

EAL is a NATA (National Association of Testing Authorities) accredited laboratory (Lab. Acc. No. 14960). Accreditation is on selected tests; EAL is continually updating the number of tests directly accredited by NATA. Please refer to the final page for a list of accredited procedures.

EAL uses many industry accepted method references as the base for NATA, ASPAC and other in-house methods of testing. These references include Standard Methods for the Examination of Water and Wastewater (APHA), Australian Standards (AS), National Acid Sulfate Soils Guidance (Sullivan, Ward, Toppler and Lancaster, 2018) and Soils Chemistry Methods – Australasia (Rayment and Lyons, 2011).

Instructions for submitting samples

Collection and preservation procedure for Water samples:

- Minimum of 500 mL required in a plastic water bottle
- Separate glass bottles required for oils and grease or organics (pesticides, hydrocarbons, phenol, etc.)
- Thoroughly rinse the bottle with sample water collecting a representative sample
- EAL can supply free of charge clean/sterile bottles on request
- Download [EAL Water Preservation Sampling Guide](#) for suggestions
- Label bottle with site name and date of sampling.

Collection procedure for soil samples

- 200-300 g required (half a plastic lunch bag is most suitable)
- Collect a representative soil sample
- Download [EAL Soil Sampling Guide](#) for suggestions
- Label bag with block, crop, client name and date of sampling.

Collection procedures for Australian Standards (AS4419, AS3743, AS4454)

- Minimum of 4 kg required (10 L plastic bucket or large heavy duty plastic bag is most suitable)
- Label samples as per relevant Australian Standard
- Call EAL with any questions.

Collection procedure for Acid Sulfate Soil and Rock samples

- Collect a representative soil or rock sample
- EAL prefers one tightly packed 70 mL vial or small rock core or dust sample (vials available free on request)
- Alternatively, send ~ 200 g double bagged to exclude oxygen
- Refer to [National Acid Sulfate Soils Guidance \(2018\)](#) for sample collection
- Label vial with name and date of sampling
- If Acid Volatile Sulfide (AVS) is required, an additional vial should be collected and immediately frozen for submission.

Courier address:

Southern Cross University
Environmental Analysis Laboratory (EAL)
Ground floor, N Block
Military Road East Lismore NSW 2480

EAL contact:

P: 02 6620 3678 or
Graham Lancaster M: 0419 984 088

NOTE: URGENT DELIVERY OF SAMPLES FOR TESTING

Collection procedure for Plant Tissue samples

- 50-100 g required (paper lunch bag is most suitable)
- Collect a representative leaf sample from areas of paddock or crop
- Download [EAL Plant Leaf Sampling Guide](#) suggestions
- Label bag with block, crop, client name and date of sampling.

Complete EAL Sample Submission Form (SSF)

- Download a [Sample Submission Form](#); excel versions also available
- Complete all relevant details on the SSF
- Use Test Codes from the Price List e.g. AS-PACK-008
- Credit card and cheque are the preferred methods of payment.

Package and send samples

- Package sample(s) in postpak, box or esky – use freezer bricks to keep acid sulfate soil materials cold
- Enclose a completed [Sample Submission Form](#) in a sealed plastic sleeve along with any other instructions
- Samples can be dropped off in person at EAL. The university gatehouse will provide directions; follow the EAL signs posted around the university. Client parking is reserved in the lane way next to sample reception
- Samples can also be sent by post or courier. TNT or TOLL are our preferred couriers, they can be contacted on 131 150 or 131 531, respectively. Please use the following delivery labels below.

Postal address:

Southern Cross University
Environmental Analysis Laboratory (EAL)
PO Box 157
Lismore NSW 2480

EAL contact:

P: 02 6620 3678 or
Graham Lancaster M: 0419 984 088

NOTE: URGENT DELIVERY OF SAMPLES FOR TESTING

Contact details:

Laboratory position	Contact	Phone / Fax	Email
Administration	Reception	02 6620 3678 / 02 6620 3957	eal@scu.edu.au
Director/Laboratory	Graham Lancaster	0419 984 088	graham.lancaster@scu.edu.au
Waters/QA Co-ordinator	Jacob Daley	0437 016 018	jacob.daley@scu.edu.au
Agricultural Co-ordinator	Kris Saville	0437 016 017	kris.saville@scu.edu.au
ICP Co-ordinator	Matt Pocock	0400 767 139	matt.pocock@scu.edu.au
Compost/Landscape Soils Co-ordinator	Brian Smith	0437 016 091	brian.smith@scu.edu.au
Acid Sulfate/Physical Co-ordinator	Nadia Toppler	0447 011 070	nadia.toppler@scu.edu.au

WATERS ANALYTICAL SERVICES

WATER TESTING

Metals as Total Available / Acid Soluble unless requested otherwise. All packs have preparation and digest/extract charge included.

ITEM CODE	SPECIFIC WATER SUITES	PRICE excl. GST	PRICE incl. GST
SW-PACK-016	Acid Sulfate Waters Includes pH, EC, Total Dissolved Salts (TDS) (calculation); Titratable Acidity; Dissolved Iron and Aluminium; Sulfate, Chloride, Sulfate:Chloride Ratio.	\$70.00	\$77.00
SW-PACK-021	Aggressivity Assessment Includes pH, EC, Total Dissolved Salts (TDS) (calculation), Resistivity (Calculation), Soluble Chloride, Sulfate.	\$45.00	\$49.50
SW-PACK-007	Agricultural Stock Use Includes pH, EC, Total Dissolved Salts (TDS) (calculation); Water Hardness; Total Alkalinity; Copper, Lead, Cadmium, Zinc, Arsenic, Selenium, Iron, Manganese, Silver, Chromium, Nickel, Aluminium, Mercury; Nitrate, Ammonium, Phosphate; Faecal Coliforms.	\$120.00	\$132.00
SW-PACK-041	Aquaculture Monitoring Suite Includes pH, Total Suspended Solids (TSS), Biochemical Oxygen Demand (BOD), Total Nitrogen (TN), Total Phosphorus (TP).	\$90.00	\$99.00
SW-PACK-001	Bacteria Includes Total Coliforms and E.Coli.	\$45.00	\$49.50
SW-PACK-064	Bacteria for Freshcare Accreditation (NATA Accredited) Includes E.Coli.	\$60.00	\$66.00
SW-PACK-025	Dust Analysis As per Total Suspended Solids (TSS) and Method AS 3580.10.1.8.2.2-1991.	\$25.00	\$27.50
SW-PACK-022	Dust Ashing Analysis Includes Volatile Suspended Solids (VSS), Total Suspended Solids (TSS), Total Dissolved Solids (TDS).	\$65.00	\$71.50
SW-PACK-018	Effluent Monitoring Includes pH, Total Suspended Solids (TSS); Biochemical Oxygen Demand (BOD); Total Oils and Grease (TOG); Total Nitrogen (TN), Total Phosphorus (TP); Nitrate, Nitrite, Phosphate, Ammonium; Faecal Coliforms.	\$170.00	\$187.00
SW-PACK-012	Environmental Monitoring 1a Includes pH, EC, Total Dissolved Salts (TDS) (calculation); Total Suspended Solids (TSS); Nitrate, Nitrite, Phosphate, Ammonium; Total Nitrogen (TN), Total Phosphorus (TP).	\$90.00	\$99.00
SW-PACK-013	Environmental Monitoring 1b (EPA Suite) Includes pH, EC, Total Dissolved Salts (TDS) (calculation); Total Suspended Solids (TSS); Nitrate, Nitrite, Phosphate, Ammonium; Total Nitrogen and Total Phosphorus; Biochemical Oxygen Demand (BOD).	\$120.00	\$132.00
SW-PACK-017	Environmental Monitoring 2 Includes pH, EC, Total Dissolved Salts (TDS) (calculation); Total Suspended Solids (TSS); Total Nitrogen and Total Phosphorus; Nitrate, Nitrite, Phosphate, Ammonium; Copper, Lead, Cadmium, Zinc, Arsenic, Selenium, Iron, Manganese, Silver, Chromium, Nickel, Aluminium, Mercury; Sodium, Potassium, Calcium, Magnesium, Sulfate, Chloride; Bicarbonate Alkalinity, Water Hardness (calculation); Sodium Absorption Ratio (SAR).	\$180.00	\$198.00

Full Analytical Services Price List - Edition: 20.1.3

Metals as Total Available / Acid Soluble unless requested otherwise. All packs have preparation and digest/extract charge included.

ITEM CODE	SPECIFIC WATER SUITES (CONT.)	PRICE excl. GST	PRICE incl. GST
SW-PACK-058	Gas Contamination Monitoring for Dissolved Gases Includes Acetylene, Butane, Ethane, Ethene, Methane and Propane.	\$140.00	\$154.00
SW-PACK-056	Gas Contamination Water Quality Monitoring Includes pH, EC, Total Dissolved Salts (TDS) (calculation), Total Alkalinity, Total Suspended Solids (TSS); Total Petroleum Hydrocarbons (TPH C10-C40), BTEX (Equivalent TPH C6-C10); Aluminium, Arsenic, Cadmium, Chromium, Copper, Iron, Lead, Manganese, Mercury, Nickel, Selenium, Silver and Zinc.	\$160.00	\$176.00
SW-PACK-005	Irrigation and Livestock Suitability – Comprehensive Includes pH, EC, Total Dissolved Salts (TDS) (calculation), Water Hardness, Total Alkalinity, Turbidity, Total Coliforms and E.Coli Bacteria; Aluminium, Arsenic, Cadmium, Chromium, Copper, Iron, Manganese, Nickel, Lead, Zinc; Nitrate, Ammonium, Phosphate; Sodium, Potassium, Calcium, Magnesium, Chloride, Sulfate, Sodium Absorption Ratio (SAR).	\$150.00	\$165.00
SW-PACK-004	Irrigation Suitability - Basic Includes pH, EC, Total Dissolved Salts (TDS) (calculation), Iron and Manganese; Sodium, Potassium, Calcium, Magnesium, Sulfate, Chloride; Turbidity, Total Alkalinity, Water Hardness (calculation), Saturation Index; Sodium Absorption Ratio (SAR).	\$80.00	\$88.00
SW-PACK-008	Langliers Index Includes pH, Sodium, Calcium, Magnesium, Total Alkalinity. Used as a general indication of the potential for corrosion.	\$35.00	\$38.50
SW-PACK-026	Liquid - Fertiliser Totals Includes acid digestion then ICP analysis for Phosphorus; Sodium, Potassium, Calcium, Magnesium, Sulfur; Silicon, Cobalt, Molybdenum, Zinc, Manganese, Iron, Copper, Boron. Also includes pH, EC, Total Dissolved Salts (TDS) (calculation); Total Nitrogen (TN).	\$180.00	\$198.00
SW-PACK-057	Liquid - Hydroponic Availables Includes 0.45 um filter then ICP analysis for Sodium, Potassium, Calcium, Magnesium, Sulfur, Chloride; Available Cobalt, Molybdenum, Zinc, Manganese, Iron, Copper, Boron. Also includes pH, EC; Total Nitrogen (TN), Phosphorus (TP).	\$130.00	\$143.00
SW-PACK-070	MRTS - FORM I - Non-potable Water Testing and Assessment Report Includes pH, EC; Sodium, Potassium, Calcium, Magnesium, Sulfate, Chloride, Sodium Absorption Ratio (SAR); Bicarbonate / Carbonate Alkalinity; Salmonella, Ecoli, Total Colilforms.	\$150.00	\$165.00
SW-PACK-020	Nutrients - Dissolved Includes Nitrate, Nitrite, Phosphate, Ammonium.	\$45.00	\$49.50
SW-PACK-019	Nutrients - Total Includes Total Nitrogen (TN), Total Phosphorus (TP).	\$50.00	\$55.00
SW-PACK-042	Petroleum Hydrocarbons Includes Total Petroleum Hydrocarbons (TPH C10-C40), BTEX (Equivalent TPH C6-C10).	\$80.00	\$88.00
SW-PACK-023	Renal RO Analysis Includes pH, EC, Total Dissolved Salts (TDS) (calculation); Sodium, Potassium, Calcium, Magnesium, Chloride, Sulfate, Water Hardness (calculation), Nitrate, Nitrite, Phosphate, Ammonium; Fluoride, Barium; Available Metals (Copper, Lead, Cadmium, Zinc, Arsenic, Selenium, Iron, Manganese, Silver, Chromium, Nickel, Aluminium, Mercury).	\$130.00	\$143.00
SW-PACK-014	Salts Suite Includes pH, EC, Sodium, Potassium, Calcium, Magnesium, Sulfate, Chloride; Total Alkalinity, Water Hardness (calculation); Sodium Absorption Ratio (SAR).	\$70.00	\$77.00

Full Analytical Services Price List - Edition: 20.1.3

Metals as Total Available / Acid Soluble unless requested otherwise. All packs have preparation and digest/extract charge included.

ITEM CODE	SPECIFIC WATER SUITES (CONT.)	PRICE excl. GST	PRICE incl. GST
SW-PACK-028	Volatile Fatty Acids (VFA) Includes Volatile Fatty Acids (VFA), pH, Alkalinity.	\$40.00	\$44.00
SW-PACK-015	Wastewater Monitoring Includes pH, Total Suspended Solids (TSS); Biochemical Oxygen Demand (BOD); Total Oils and Grease (TOG).	\$85.00	\$93.50
SW-PACK-055	Water Analysis - Basic Includes pH, EC, Total Dissolved Salts (TDS) (calculation); Total Suspended Solids (TSS).	\$28.00	\$30.80
SW-PACK-002	Water Quality - Basic For drinking and domestic use. Includes pH, EC, Total Dissolved Salts (TDS) (calculation), Water Hardness, Total Alkalinity, Turbidity, Total Coliforms, E.Coli Bacteria.	\$70.00	\$77.00
SW-PACK-003	Water Quality - Comprehensive For drinking and domestic use. Includes pH, EC, Total Dissolved Salts (TDS) (calculation), Water Hardness, Total Alkalinity, Turbidity, Total Coliforms and E.Coli Bacteria; Nitrate; Aluminium, Arsenic, Cadmium, Chromium, Copper, Iron, Manganese, Nickel, Lead, Zinc.	\$110.00	\$121.00
SW-PACK-071	Water quality for concrete mixes under AS1379 Includes pH, EC, TDS (by calc), Total Suspended Solids, Total Oils and Grease, Sugars (Biological Oxygen Demand), Chloride, Sodium and Sulfate.	\$140.00	\$154.00

ITEM CODE	WATERS PREPARATIONS	PRICE excl. GST	PRICE incl. GST
SW-PREP-005	As Supplied - Research Samples/External Preparation	\$0.00	\$0.00
SW-PREP-003	Filtered/Dissolved Metals Immediate filtration through 0.45 µm filter followed by acidification with Nitric acid. It is particularly important where waters are high in suspended clay matter, where Iron and Aluminium may be present.	\$5.00	\$5.50
SW-PREP-006	Saline Waters Instrument Setup (per batch)	\$100.00	\$110.00
SW-PREP-002	Total Available/Acid Soluble Metals Acidification with Nitric acid. Used on nearly all environmental waters, acid sulfate waters, groundwater and surfacewaters (According to ANZECC guidelines). Also used for clean waters, drinking waters, when acidified in the field and when requested.	\$5.00	\$5.50
SW-PREP-001	Total Recoverable Metals Nitric Acid digest. Used on high sludge/solid waters, liquid fertilisers and when requested.	\$15.00	\$16.50

All packs have preparation and digest/extract charge included. Saline waters that request low level metals require (SW-PREP-006).

ITEM CODE	METAL SUITES	PRICE excl. GST	PRICE incl. GST
SW-PACK-031	Basic Metals Scan - As Supplied (ICPMS) Includes Aluminium, Arsenic, Cadmium, Chromium, Copper, Iron, Lead, Manganese, Mercury, Nickel, Selenium, Silver and Zinc.	\$55.00	\$60.50
SW-PACK-040	Basic Metals Scan - Dissolved (filtered then acidified) (ICPMS) Refer to SW-PACK-031 for list of elements.	\$60.00	\$66.00
SW-PACK-029	Basic Metals Scan - Total Available / Acid Soluble (acidified) (ICPMS) Refer to SW-PACK-031 for list of elements.	\$60.00	\$66.00

Full Analytical Services Price List - Edition: 20.1.3

All packs have preparation and digest/extract charge included. Saline waters that request low level metals require (SW-PREP-006).

ITEM CODE	METAL SUITES (CONT.)	PRICE excl. GST	PRICE incl. GST
SW-PACK-030	Basic Metals Scan - Total Recoverable (digested with nitric acid) (ICPMS) Refer to SW-PACK-031 for list of elements.	\$65.00	\$71.50
SW-PACK-043	Extra Metals Scan - As Supplied (ICPMS) Includes Antimony, Barium, Beryllium, Bismuth, Boron, Bromide, Cobalt, Lithium, Molybdenum, Silicon, Strontium, Thallium, Thorium, Uranium and Vanadium.	\$55.00	\$60.50
SW-PACK-044	Extra Metals Scan - Dissolved (filtered then acidified) (ICPMS) Refer to SW-PACK-043 for list of elements.	\$60.00	\$66.00
SW-PACK-045	Extra Metals Scan - Total Available/Acid Soluble (acidified) (ICPMS) Refer to SW-PACK-043 for list of elements.	\$60.00	\$66.00
SW-PACK-046	Extra Metals Scan - Total Recoverable (digested with nitric acid) (ICPMS) Refer to SW-PACK-043 for list of elements.	\$65.00	\$71.50
SW-PACK-060	Saline Water Metals (Low Level) > 20 mS/cm (As Supplied) (ICPMS) Includes Basic (Aluminium, Arsenic, Cadmium, Chromium, Copper, Iron, Lead, Manganese, Mercury, Nickel, Selenium, Silver and Zinc); Extra (Barium, Beryllium, Bismuth, Cobalt, Molybdenum, Thallium, Uranium and Vanadium).	\$80.00	\$88.00
SW-PACK-061	Saline Water Metals (Low Level) > 20 mS/cm (Dissolved) (ICPMS) Refer to SW-PACK-060 for list of elements.	\$85.00	\$93.50
SW-PACK-062	Saline Water Metals (Low Level) > 20 mS/cm (Total Available/Acid Soluble) (ICPMS) Refer to SW-PACK-060 for list of elements.	\$85.00	\$93.50
SW-PACK-063	Saline Water Metals (Low Level) > 20 mS/cm (Total Recoverable) (ICPMS) Refer to SW-PACK-060 for list of elements.	\$90.00	\$99.00
SW-PACK-039	Salts Scan - As Supplied (ICPMS) Includes Calcium, Chloride, Magnesium, Potassium, Sodium and Sulfur.	\$30.00	\$33.00
SW-PACK-036	Salts Scan - Dissolved (filtered then acidified) (ICPMS) Refer to SW-PACK-039 for list of elements.	\$35.00	\$38.50
SW-PACK-037	Salts Scan - Total Available/Acid Soluble (acidified) (ICPMS) Refer to SW-PACK-039 for list of elements.	\$35.00	\$38.50
SW-PACK-038	Salts Scan - Total Recoverable (digested with nitric acid) (ICPMS) Refer to SW-PACK-039 for list of elements.	\$40.00	\$44.00
SW-PACK-051	Special - Metals and Salts Combo - As Supplied (ICPMS) Includes Basic (Aluminium, Arsenic, Cadmium, Chromium, Copper, Iron, Lead, Manganese, Mercury, Nickel, Selenium, Silver and Zinc); Extra (Antimony, Barium, Beryllium, Bismuth, Boron, Bromide, Cobalt, Lithium, Molybdenum, Silicon, Strontium, Thallium, Thorium, Uranium and Vanadium) and Salts (Calcium, Chloride, Magnesium, Potassium, Sodium and Sulfur).	\$110.00	\$121.00
SW-PACK-052	Special - Metals and Salts Combo - Dissolved (filtered then acidified) (ICPMS) Refer to SW-PACK-051 for list of elements.	\$115.00	\$126.50
SW-PACK-053	Special - Metals and Salts Combo - Total Available/Acid Soluble (acidified) (ICPMS) Refer to SW-PACK-051 for list of elements.	\$115.00	\$126.50
SW-PACK-054	Special - Metals and Salts Combo - Total Recoverable (digested with nitric acid) (ICPMS) Refer to SW-PACK-051 for list of elements.	\$120.00	\$132.00

Waters Price List - Edition: 20.1.3

All packs have preparation and digest/extract charge included. Saline waters that request low level metals require (SW-PREP-006).

ITEM CODE	METAL SUITES (CONT.)	PRICE excl. GST	PRICE incl. GST
SW-PACK-069	Speciated Antimony Includes toxic antimony species SbIII determination using HPLC-ICPMS (Total Antimony analysis also included to determine SbV) 1% of volume HCl preservation in PP (preservation to be confirmed).	\$350.00	\$385.00
SW-PACK-067	Speciated Arsenic Includes toxic arsenic species AsV determination using HPLC-ICPMS (Total Arsenic analysis also included to determine As III) 1% of volume HCl preservation in PP.	\$350.00	\$385.00
SW-PACK-068	Speciated Chromium Includes toxic hexavalent chromium species CrVI determination using HPLC-ICPMS (Total Chromium analysis also included to determine CrIII) 1 M NaOH preservation (approx.3 drops/30 mL to adjust pH to 8-9.5) in PP.	\$350.00	\$385.00
SW-PACK-066	Speciated Mercury Includes toxic mercury species Methyl Mercury determination using HPLC-ICPMS (Total Mercury analysis also included to determine HgII) 1% of volume HCl preservation in glass jar.	\$350.00	\$385.00
SW-PACK-047	Specific - Rare Earth - As Supplied (ICPMS) Includes Cerium, Dysprosium, Erbium, Europium, Gadolinium, Holmium, Lanthanum, Lutetium, Neodymium, Praseodymium, Samarium, Scandium, Terbium, Thorium, Thulium, Uranium, Ytterbium and Yttrium.	\$75.00	\$82.50
SW-PACK-048	Specific - Rare Earth - Dissolved (filtered then acidified) (ICPMS) Refer to SW-PACK-047 for list of elements.	\$80.00	\$88.00
SW-PACK-049	Specific - Rare Earth - Total Available / Acid Soluble (acidified) (ICPMS) Refer to SW-PACK-047 for list of elements.	\$80.00	\$88.00
SW-PACK-050	Specific - Rare Earth - Total Recoverable (digested with nitric acid) (ICPMS) Refer to SW-PACK-047 for list of elements.	\$85.00	\$93.50

Single tests may require sample preparation.

ITEM CODE	INDIVIDUAL METAL TESTS	PRICE excl. GST	PRICE incl. GST
SW-SING-102	General Metals - As Supplied (external prep) Price per element Aluminium, Antimony, Arsenic, Barium, Beryllium, Bismuth, Boron, Bromide, Cadmium, Calcium, Chromium, Cobalt, Copper, Iron, Lead, Lithium, Magnesium, Manganese, Mercury, Molybdenum, Nickel, Phosphorus, Potassium, Selenium, Silicon, Silver, Sodium, Strontium, Sulfur, Thallium, Thorium, Uranium, Vanadium or Zinc.	\$10.00	\$11.00
SW-SING-103	General Metals - Dissolved Refer to SW-SING-102.	\$10.00	\$11.00
SW-SING-104	General Metals - Total Available/Acid Soluble Refer to SW-SING-102.	\$10.00	\$11.00
SW-SING-105	General Metals - Total Recoverable Refer to SW-SING-102.	\$10.00	\$11.00
SW-SING-106	Non-Standard Metals - As Supplied Price per element Cerium, Dysprosium, Erbium, Europium, Gadolinium, Gallium, Gold, Holmium, Lanthanum, Lutetium, Neodymium, Praseodymium, Rubidium, Samarium, Scandium, Terbium, Thulium, Tin, Titanium, Tungsten, Ytterbium or Yttrium.	\$15.00	\$16.50

Single tests may require sample preparation.

ITEM CODE	INDIVIDUAL METAL TESTS (CONT.)	PRICE excl. GST	PRICE incl. GST
SW-SING-107	Non-Standard Metals - Dissolved Refer to SW-SING-106.	\$15.00	\$16.50
SW-SING-108	Non-Standard Metals - Total Available/Acid Soluble Refer to SW-SING-106.	\$15.00	\$16.50
SW-SING-109	Non-Standard Metals - Total Recoverable Refer to SW-SING-106.	\$15.00	\$16.50

All packs have preparation and digest/extract charge included.

ITEM CODE	RESIDUE SUITES	PRICE excl. GST	PRICE incl. GST
SW-PACK-072	Complete Waters Residue Screen Includes RS1 + RS2 (OCOP Pesticides + Synthetic Pyrethroids – 80+ Residues + Herbicide and Fungicide – 40+ Residue).	\$280.00	\$308.00
SW-PACK-009	Pesticide Screen 1a Includes Organo-chlorines (OC), Organo-phosphates (OP).	\$70.00	\$77.00
SW-PACK-010	Pesticide Screen 1b Includes Organo-chlorines (OC), Organo-phosphates (OP) and Polychlorinated biphenyls (PCB).	\$90.00	\$99.00
SW-PACK-024	Pesticide Screen 2a - Low Level Includes Low Level Pesticide Analysis: Organo-chlorines (OC) and Organo-phosphates (OP).	\$170.00	\$187.00
SW-PACK-027	Pesticide Screen 2b - Low Level Includes Low Level Pesticide Analysis: Organo-chlorines (OC), Organo-phosphates (OP), Polychlorinated Biphenyls (PCB).	\$180.00	\$198.00
SW-PACK-059	Pesticide Screen 3 - In Oil Includes Organo-chlorines (OC), Organo-phosphates (OP). Note: 25 mL required.	\$150.00	\$165.00

Single tests may require sample preparation.

ITEM CODE	INDIVIDUAL RESIDUE TESTS	PRICE excl. GST	PRICE incl. GST
SW-SING-116	Glyphosate (Round Up)	\$170.00	\$187.00
SW-SING-098	Herbicides Phenoxy Acid	\$170.00	\$187.00
SW-SING-062	Hydrocarbons - BTEX (Equivalent to TPH C6-C10)	\$50.00	\$55.00
SW-SING-008	Hydrocarbons - Polycyclic Aromatic Hydrocarbons (PAH)	\$65.00	\$71.50
SW-SING-063	Hydrocarbons - Total Petroleum (TPH C10-C40)	\$50.00	\$55.00
SW-SING-064	Organo-chlorines (OC)	\$65.00	\$71.50
SW-SING-113	Organo-chlorines (OC) - In Oil Note: 25 mL required.	\$120.00	\$132.00
SW-SING-096	Organo-chlorines (OC) - Low Level	\$160.00	\$176.00
SW-SING-065	Organo-phosphates (OP)	\$65.00	\$71.50
SW-SING-114	Organo-phosphates (OP) - In Oil Note: 25 mL required.	\$120.00	\$132.00

Single tests may require sample preparation.

ITEM CODE	INDIVIDUAL RESIDUE TESTS (CONT.)	PRICE excl. GST	PRICE incl. GST
SW-SING-097	Organo-phosphates (OP) - Low Level	\$160.00	\$176.00
SW-SING-117	Organotins (MBT, TBT, DBT)	\$260.00	\$286.00
SW-SING-121	PFAS in water – standard level 28 suite with detection 0.01-0.05 µg/L Includes the analysis of per- and poly-fluoroalkyl substances (PFAS) in water.	\$170.00	\$187.00
SW-SING-038	Phenol - Total	\$60.00	\$66.00
SW-SING-026	Phenolics - Speciated Phenols	\$90.00	\$99.00
SW-SING-066	Polychlorinated Biphenyls (PCB)	\$65.00	\$71.50
SW-SING-099	Polychlorinated Biphenyls (PCB) - Low Level	\$160.00	\$176.00
SW-SING-111	Semi-Volatile Organic Compounds (SVOC) SVOC includes Phenols.	\$260.00	\$286.00
SW-SING-037	Trihalomethanes (THM)	\$60.00	\$66.00
SW-SING-095	Volatile Halogenated Compounds (VHC)	\$90.00	\$99.00
SW-SING-094	Volatile Organic Compounds (VOC) VOC includes BTEX.	\$115.00	\$126.50

Single tests may require sample preparation.

ITEM CODE	INDIVIDUAL MICROBIAL TESTS	PRICE excl. GST	PRICE incl. GST
SW-SING-039	Bacteria - Faecal Coliforms	\$35.00	\$38.50
SW-SING-040	Bacteria - Total Coliforms	\$35.00	\$38.50
SW-SING-041	E.Coli - 24 h Incubation	\$40.00	\$44.00
SW-SING-042	Enterococci	\$45.00	\$49.50
SW-SING-036	Legionella	\$100.00	\$110.00
SW-SING-043	Listeria	\$60.00	\$66.00
SW-SING-044	Pseudomonas	\$45.00	\$49.50
SW-SING-045	Salmonella	\$60.00	\$66.00
SW-SING-046	Total Plate Count	\$45.00	\$49.50

Single tests may require sample preparation.

ITEM CODE	INDIVIDUAL NITROGEN TESTS	PRICE excl. GST	PRICE incl. GST
SW-SING-047	Ammonium	\$20.00	\$22.00
SW-SING-048	Nitrate	\$20.00	\$22.00
SW-SING-049	Nitrite	\$20.00	\$22.00
SW-SING-050	NOx	\$20.00	\$22.00
SW-SING-051	Total Kjeldahl Nitrogen (TKN) Includes Total Nitrogen and NOx.	\$40.00	\$44.00
SW-SING-052	Total Nitrogen (TN)	\$30.00	\$33.00
SW-SING-118	Total Nitrogen by LECO	\$30.00	\$33.00

ITEM CODE	INDIVIDUAL GENERAL TESTS	PRICE excl. GST	PRICE incl. GST
SW-SING-031	Acidity (Titratable) Includes pH.	\$18.00	\$19.80
SW-SING-022	Algae - Basic ID and Count (Blue Green Algae only) by Microscopic Identification	\$110.00	\$121.00
SW-SING-123	Algae - Full ID and Count by Microscopic Identification	\$160.00	\$176.00
SW-SING-075	Alkalinity - Bicarbonate	\$18.00	\$19.80
SW-SING-076	Alkalinity - Carbonate	\$18.00	\$19.80
SW-SING-077	Alkalinity - Total	\$18.00	\$19.80
SW-SING-110	Biochemical Oxygen Demand (BOD) - Dissolved	\$45.00	\$49.50
SW-SING-012	Biochemical Oxygen Demand (BOD) - Total	\$45.00	\$49.50
SW-SING-078	Carbon - Dissolved Organic (DOC)	\$50.00	\$55.00
SW-SING-079	Carbon - Total Organic (TOC)	\$50.00	\$55.00
SW-SING-119	Carbon - Total Organic (TOC) by LECO	\$50.00	\$55.00
SW-SING-013	Chemical Oxygen Demand (COD)	\$45.00	\$49.50
SW-SING-080	Chloride - Available	\$18.00	\$19.80
SW-SING-081	Chlorine - Free	\$18.00	\$19.80
SW-SING-082	Chlorine - Total Residual Includes Total Residual Chlorine and Free Chlorine.	\$36.00	\$39.60
SW-SING-017	Chlorophyll 'a' and Algal Biomass	\$54.00	\$59.40
SW-SING-030	Chromium VI - Hexavalent Speciation by a screening colourimetric technique which may be subject to matrix interference. Refer to separate analysis codes for speciation using HPLC-ICPMS analysis.	\$36.00	\$39.60
SW-SING-073	Colour - Apparent	\$14.00	\$15.40
SW-SING-074	Colour - True	\$14.00	\$15.40
SW-SING-056	Conductivity - Electrical	\$10.00	\$11.00
SW-SING-029	Cyanide - Total	\$50.00	\$55.00
SW-SING-083	Fluoride	\$20.00	\$22.00
SW-SING-116	Glyphosate (Round Up)	\$220.00	\$242.00
SW-SING-084	Hardness	\$18.00	\$19.80
SW-SING-124	Insoluble Matter – Liquid Fertilisers Includes insoluble matter mg/L.	\$30.00	\$33.00
SW-SING-027	Iodine - Total	\$60.00	\$66.00
SW-SING-085	Moisture (105 °C)	\$20.00	\$22.00
SW-SING-058	Oxygen - Dissolved (DO)	\$10.00	\$11.00
SW-SING-115	Particle Size Analysis - Laser Diffraction Particle size analysis using a Malvern Mastersizer 3000 or 2000. Span dependent on instrument choice 0.01 to 3000 µm or 0.01 to 2000 µm. Size classes dictated by client requirements. Price dependent upon application and sample amounts.	\$100.00	\$110.00

ITEM CODE	INDIVIDUAL GENERAL TESTS (CONT.)	PRICE excl. GST	PRICE incl. GST
SW-SING-055	pH	\$10.00	\$11.00
SW-SING-054	Phosphorus - Available Orthophosphate	\$20.00	\$22.00
SW-SING-053	Phosphorus - Total (TP) Autoclave digestion and analysis by FIA.	\$30.00	\$33.00
SW-SING-059	Redox	\$10.00	\$11.00
SW-SING-057	Salinity	\$10.00	\$11.00
SW-SING-122	Silica - Total Includes specialised NaOH high temperature fusion extraction of silicon as per dry weight.	\$150.00	\$165.00
SW-SING-120	Specific Gravity - Hydrometer method Includes specific gravity and temperature on sample volumes greater than 200 mL.	\$20.00	\$22.00
SW-SING-035	Specific Gravity - Volumetric method Includes specific gravity and temperature on samples with small volumes.	\$20.00	\$22.00
SW-SING-067	Sulfide - Dissolved	\$22.00	\$24.20
SW-SING-068	Sulfide - Total	\$22.00	\$24.20
SW-SING-100	Sulfite - Dissolved	\$22.00	\$24.20
SW-SING-101	Sulfite - Total	\$22.00	\$24.20
SW-SING-028	Surfactant - MBAS	\$50.00	\$55.00
SW-SING-021	Tannin/Lignin	\$60.00	\$66.00
SW-SING-060	Temperature	\$10.00	\$11.00
SW-SING-061	Total Dissolved Salts (TDS) (calculation)	\$10.00	\$11.00
SW-SING-034	Total Dissolved Solids (TDS) Includes filtering and TDS by evaporation.	\$20.00	\$22.00
SW-SING-118	Total Nitrogen by LECO	\$30.00	\$33.00
SW-SING-011	Total Oils and Grease (TOG) - Hexane extractable	\$50.00	\$55.00
SW-SING-033	Total Solids	\$20.00	\$22.00
SW-SING-003	Total Suspended Solids (TSS)	\$20.00	\$22.00
SW-SING-069	Turbidity	\$12.00	\$13.20
SW-SING-070	UV Absorbency	\$25.00	\$27.50
SW-SING-072	UV Transmission - Filtered	\$25.00	\$27.50
SW-SING-071	UV Transmission - Unfiltered	\$25.00	\$27.50
SW-SING-005	Volatile Suspended Solids (VSS)	\$35.00	\$38.50

ACID SULFATE SOIL ANALYTICAL SERVICES

SOIL TESTING

All suites have preparation and digest/extract charges included.

ITEM CODE	SOIL SUITES	PRICE excl. GST	PRICE incl. GST
AS-PACK-007	Acid Sulfate pH-F and pH-FOX Testing Includes moisture content, drying and ring mill grinding. Field based technique modified for lab use. Results should be used in conjunction with field descriptions to indicate which samples require further laboratory testing.	\$20.00	\$22.00
AS-PACK-014	Acid Sulfate Soil Field pH-W and pH-FOX Includes pH-W and pH-FOX on raw sample, as supplied. Results should be used in conjunction with field descriptions to indicate which samples require further laboratory testing.	\$10.00	\$11.00
AS-PACK-008	Acid Sulfate Soil Net Acidity - S-CR (National Guidance 2018) Includes Net Acidity and liming rate with analysis of Reduced Inorganic Sulfur (Chromium Reducible Sulfur; S-CR), KCl extractable pH (pH-KCl), Actual Acidity (Titratable Actual Acidity; TAA) where pH-KCl < 6.5, Retained Acidity (Net Acid Soluble Sulfur; S-NAS) where pH-KCl < 4.5 and Acid Neutralising Capacity (ANC-BT) where pH-KCl => 6.5.	\$90.00	\$99.00
AS-PACK-013	Acid Sulfate Soil Net Acidity - S-POS (National Guidance 2018) Includes Net Acidity and liming rate with analysis of Reduced Inorganic Sulfur (Peroxide Oxidisable Sulfur; S-POS), KCl extractable pH (pH-KCl), Actual Acidity (Titratable Actual Acidity; TAA) where pH-KCl < 6.5, Retained Acidity (Net Acid Soluble Sulfur; S-NAS) where pH-KCl < 4.5 and Acid Neutralising Capacity (ANC-BT) where pH-KCl => 6.5.	\$130.00	\$143.00
AS-PACK-011	Acid Sulfate Soil Net Acidity for Treatment Verification (National Guidance 2018) Includes Net Acidity and liming rate with analysis of Reduced Inorganic Sulfur (Chromium Reducible Sulfur; S-CR), KCl extractable pH (pH-KCl), Actual Acidity (Titratable Actual Acidity; TAA) where pH-KCl < 6.5 and Acid Neutralising Capacity (ANC-BT). Client must provide pre-liming ANC-BT. Routine TAT of 3 days with a reduced surcharge of 50% for 24 h TAT (limited to 15 samples).	\$100.00	\$110.00
AS-PACK-004	Acid Volatile Sulfide and Reduced Inorganic Sulfur Includes Acid Volatile Sulfide (S-AV) and Chromium Reducible Sulfur (S-CR).	\$120.00	\$132.00
AS-PACK-001	Actual and Potential Acidity Includes analysis of Reduced Inorganic Sulfur (Chromium Reducible Sulfur; S-CR), KCl extractable pH (pH-KCl), Actual Acidity (Titratable Actual Acidity; TAA) where pH-KCl < 6.5. If Net Acidity and Liming Rate are required AS-PACK-008 should be used instead of AS-PACK-001.	\$70.00	\$77.00
SS-PACK-054	Incubation - Chip Tray This method is used to assess the effectiveness of a soil's Acid Neutralising Capacity (ANC). Includes pH-F before and pH-INC after 9 weeks incubation, with further incubation to 19 weeks where $4 \leq \text{pH-INC} \leq 6.5$.	\$60.00	\$66.00
SS-PACK-073	Incubation - Slab This method is used to assess the effectiveness of a soil's Acid Neutralising Capacity (ANC). The incubation is maintained and pH-INC taken fortnightly until the soil pH changes by at least 0.5 pH unit to below 4, or for at least 8 weeks until pH-INC is stable.	\$180.00	\$198.00

Full Analytical Services Price List - Edition: 20.1.3

All suites have preparation and digest/extract charges included.

ITEM CODE	SOIL SUITES (CONT.)	PRICE excl. GST	PRICE incl. GST
AS-PACK-012	Sulfate to Chloride Ratio Includes Sulfate and Chloride (1:5 water) and Sulfate/Chloride Ratio.	\$30.00	\$33.00

ITEM CODE	SOIL PREPARATIONS	PRICE excl. GST	PRICE incl. GST
SS-PREP-010	Acid Sulfate Soil - Sample Preparation - Required for all individual testing Includes 80 °C moisture content, drying and ring mill grinding. Required for all samples analysed on a dry weight basis.	\$10.00	\$11.00
SS-PREP-016	Fizz Test for Carbonates This method is used to indicate the presence of carbonates.	\$3.00	\$3.30
SS-SING-001	Moisture Content - As Received (%) at 105 °C Oven-dry moisture content as a per cent of the 'as-received' sample (105 °C).	\$10.00	\$11.00
SS-PREP-017	Total Dry Weight - Oven dry basis Mass of the sample dried at 105 °C. Used to calculate bulk density when cores are supplied.	\$6.00	\$6.60

All samples require Sample Preparation (SS-PREP-010) unless a Discounted Testing Suite is selected.

ITEM CODE	INDIVIDUAL SOIL TESTS	PRICE excl. GST	PRICE incl. GST
SS-SING-090	Acid Neutralising Capacity (ANC-BT) This method is used to measure Acid Neutralising Capacity (ANC-BT) where pH-KCl > 6.5.	\$30.00	\$33.00
SS-SING-201	Acid Neutralising Capacity by Total Inorganic Carbon (C-IN) This method is used to measure Acid Neutralising Capacity (ANC) where the pH-KCl > 6.5.	\$45.00	\$49.50
SS-SING-089	Acid Volatile Sulfide (AVS) This method measures Acid Volatile Sulfides (S-AV). All samples should be frozen on collection and transported in an esky with freezer bricks.	\$50.00	\$55.00
SS-SING-088	Chromium Reducible Sulfur (CRS) This method measures Reduced Inorganic Sulfur (S-CR) and is not subject to interferences by sulfate minerals and organic matter.	\$50.00	\$55.00
SS-SING-064	Electical Conductivity (1:5 water)	\$12.50	\$13.75
SS-SING-246	Elemental Sulfur This includes Elemental Sulfur (S-E).	\$70.00	\$77.00
SS-SING-093	Net Acid Soluble Sulfur (S-NAS) This method estimates Retained Acidity where pH-KCl < 4.5.	\$30.00	\$33.00
SS-SING-163	Peroxide Oxidisable Sulfur (S-POS) This method estimates Reduced Inorganic Sulfur. It can include interferences from sulfate minerals and organic matter.	\$85.00	\$93.50
SS-SING-202	pH - KCl extractable (pH-KCl) This method is used to determine what further testing is required for Net Acidity calculations: Titratable Actual Acidity (TAA; pH-KCl < 6.5), Net Acid Soluble Sulfur (S-NAS; pH-KCl < 4.5), Acid Neutralising Capacity (ANC-BT or C-IN; pH-KCl => 6.5).	\$20.00	\$22.00

Full Analytical Services Price List - Edition: 20.1.3

All samples require Sample Preparation (SS-PREP-010) unless a Discounted Testing Suite is selected.

ITEM CODE	INDIVIDUAL SOIL TESTS (CONT.)	PRICE excl. GST	PRICE incl. GST
SS-SING-101	pH and Sulfate (1:1 water) This method is used for classification of actual acid sulfate soil materials.	\$30.00	\$33.00
SS-SING-098	Sulfur - KCl Extractable This method is used to measure sulfur concentration after Titratable Actual Acidity (TAA) analysis.	\$10.00	\$11.00
SS-SING-208	Texture - Full (NCST, 2009) This method is used for acid sulfate soil action criteria.	\$20.00	\$22.00
SS-SING-095	Titrateable Actual Acidity (TAA) This method measures Actual Acidity. Titratable Actual Acidity (TAA) titrated to pH 6.5.	\$30.00	\$33.00

ROCK TESTING

All suites have preparation and digest/extract charges included.

ITEM CODE	ROCK SUITES	PRICE excl. GST	PRICE incl. GST
AS-PACK-010	Acid Sulfate Rock with Chromium Reducible Sulfur Includes Net Acid Producing Potential (NAPP), NAG pH and Net Acid Generation (NAG) (single addition peroxide acidity), Acid Neutralising Capacity (ANC-BT) and Reduced Inorganic Sulfur (S-CR) (combined in NAPP equation).	\$110.00	\$121.00
AS-PACK-006	Acid Sulfate Rock with Total Sulfur Includes Net Acid Producing Potential (NAPP), NAG pH and Net Acid Generation (NAG) (single addition peroxide acidity), Acid Neutralising Capacity (ANC-BT) and Total Sulfur (combined in NAPP equation).	\$90.00	\$99.00

ITEM CODE	ROCK PREPARATIONS	PRICE excl. GST	PRICE incl. GST
SS-PREP-010	Acid Sulfate Soil - Sample Preparation - Required for all individual testing Includes 80°C moisture content, drying and ring mill grinding. Required for all samples analysed on a dry weight basis.	\$10.00	\$11.00
SS-SING-001	Moisture Content - As Received (%) at 105 °C Oven-dry moisture content as a per cent of the 'as-received' sample (105 °C).	\$10.00	\$11.00

All samples require Sample Preparation (SS-PREP-010) unless a Discounted Testing Suite is selected.

ITEM CODE	INDIVIDUAL ROCK TESTS	PRICE excl. GST	PRICE incl. GST
SS-SING-090	Acid Neutralising Capacity (ANC-BT) This method is used to measure Acid Neutralising Capacity (ANC-BT) where pH-KCl > 6.5.	\$30.00	\$33.00
SS-SING-201	Acid Neutralising Capacity by Total Inorganic Carbon (C-IN) This method is used to measure Acid Neutralising Capacity (ANC) where the pH-KCl > 6.5.	\$45.00	\$49.50
SS-SING-088	Chromium Reducible Sulfur (CRS) This method measures Reduced Inorganic Sulfur (S-CR) and is not subject to interferences by sulfate minerals and organic matter.	\$50.00	\$55.00
SS-SING-102	Net Acid Generation (NAG) This method is used to determine the Net Acid Generation (NAG) of rock material. Includes NAGpH.	\$40.00	\$44.00
SS-SING-144	Total Sulfur (TS) by LECO	\$20.00	\$22.00

WATER TESTING

All suites have preparation and digest/extract charges included.

ITEM CODE	WATER SUITES	PRICE excl. GST	PRICE incl. GST
SW-PACK-016	Acid Sulfate Waters Includes pH, EC, Total Dissolved Salts (TDS) (calculation); Titratable Acidity; Dissolved Iron and Aluminium; Sulfate, Chloride, Sulfate:Chloride Ratio.	\$70.00	\$77.00
SW-PACK-040	Basic Metals Scan - Dissolved (filtered then acidified) (ICPMS) Includes Aluminium, Arsenic, Cadmium, Chromium, Copper, Iron, Lead, Manganese, Mercury, Nickel, Selenium, Silver and Zinc.	\$60.00	\$66.00
SW-PACK-029	Basic Metals Scan - Total Available / Acid Soluble (acidified) (ICPMS) Includes Aluminium, Arsenic, Cadmium, Chromium, Copper, Iron, Lead, Manganese, Mercury, Nickel, Selenium, Silver and Zinc.	\$60.00	\$66.00
SW-PACK-044	Extra Metals Scan - Dissolved (filtered then acidified) (ICPMS) Includes Antimony, Barium, Beryllium, Bismuth, Boron, Bromide, Cobalt, Lithium, Molybdenum, Silicon, Strontium, Thallium, Thorium, Uranium and Vanadium.	\$60.00	\$66.00
SW-PACK-045	Extra Metals Scan - Total Available/Acid Soluble (acidified) (ICPMS) Includes Antimony, Barium, Beryllium, Bismuth, Boron, Bromide, Cobalt, Lithium, Molybdenum, Silicon, Strontium, Thallium, Thorium, Uranium and Vanadium.	\$60.00	\$66.00
SW-PACK-048	Specific - Rare Earth - Dissolved (filtered then acidified) (ICPMS) Includes Cerium, Dysprosium, Erbium, Europium, Gadolinium, Holmium, Lanthanum, Lutetium, Neodymium, Praseodymium, Samarium, Scandium, Terbium, Thorium, Thulium, Uranium, Ytterbium and Yttrium.	\$80.00	\$88.00
SW-PACK-049	Specific - Rare Earth - Total Available/Acid Soluble (acidified) (ICPMS) Includes Cerium, Dysprosium, Erbium, Europium, Gadolinium, Holmium, Lanthanum, Lutetium, Neodymium, Praseodymium, Samarium, Scandium, Terbium, Thorium, Thulium, Uranium, Ytterbium and Yttrium.	\$80.00	\$88.00

AGRICULTURAL ANALYTICAL SERVICES

SOIL TESTING

All suites have preparation and digest/extract charges included.

ITEM CODE	ROUTINE SOIL SUITES	PRICE excl. GST	PRICE incl. GST
RA-PACK-001	Agricultural - Albrecht/Reams Includes pH and EC (1:5 water); Available Calcium, Magnesium, Potassium, Ammonium, Nitrate, Phosphate, Sulfur; Exchangeable Sodium, Potassium, Calcium, Magnesium, Hydrogen, Aluminium, Cation Exchange Capacity; Bray I and II Phosphorus; Colwell Phosphorus; Available Micronutrients Zinc, Manganese, Iron, Copper, Boron, Silicon; Total Carbon (TC), Total Nitrogen (TN), Organic Matter, TC/TN Ratio; Basic Colour, Basic Texture.	\$110.00	\$121.00
RA-PACK-002	Agricultural - Albrecht/Reams plus Totals Includes pH and EC (1:5 water); Available Calcium, Magnesium, Potassium, Ammonium, Nitrate, Phosphate, Sulfur; Exchangeable Sodium, Potassium, Calcium, Magnesium, Hydrogen, Aluminium, Cation Exchange Capacity; Bray I and II Phosphorus; Colwell Phosphorus; Available Micronutrients Zinc, Manganese, Iron, Copper, Boron, Silicon; Total Carbon (TC), Total Nitrogen (TN), TC/TN Ratio, Organic Matter; Basic Colour, Basic Texture; Total Sodium, Potassium, Calcium, Magnesium, Sulfur, Phosphorus, Silicon, Cobalt, Molybdenum, Selenium, Zinc, Manganese, Iron, Copper, Boron and Aluminium.	\$160.00	\$176.00
RA-PACK-003	Agricultural - Albrecht/Reams plus Totals and Heavy Metals Includes pH and EC (1:5 water); Available Calcium, Magnesium, Potassium, Ammonium, Nitrate, Phosphate, Sulfur; Exchangeable Sodium, Potassium, Calcium, Magnesium, Hydrogen, Aluminium, Cation Exchange Capacity; Bray I and II Phosphorus; Colwell Phosphorus; Available Micronutrients Zinc, Manganese, Iron, Copper, Boron, Silicon; Total Carbon (TC), Total Nitrogen (TN), TC/TN Ratio, Organic Matter; Basic Colour, Basic Texture; Total Sodium, Potassium, Calcium, Magnesium, Sulfur, Phosphorus, Silicon, Cobalt, Molybdenum, Selenium, Zinc, Manganese, Iron, Copper, Boron and Aluminium; Heavy Metals Silver, Arsenic, Lead, Chromium, Nickel, Cadmium, Mercury.	\$180.00	\$198.00
RA-PACK-014	Agricultural - Standard C Includes pH and EC (1:5 water); pH (1:5 CaCl); Available (Ammonium, Nitrate, Sulfur); Exchangeable Sodium, Potassium, Calcium, Magnesium, Hydrogen, Aluminium, Cation Exchange Capacity; Colwell Phosphorus; Available Micronutrients Zinc, Manganese, Iron, Copper, Boron, Silicon; Total Carbon (TC), Total Nitrogen (TN), TC/TN Ratio, Organic Matter; Basic Colour, Basic Texture.	\$100.00	\$110.00
RA-PACK-015	Agricultural - Sugarcane Reefwise Includes pH and EC (1:5 water); pH (1:5 CaCl); Available Ammonium, Nitrate, Sulfur; Exchangeable Sodium, Potassium, Calcium, Magnesium, Hydrogen, Aluminium, Cation Exchange Capacity; Nitric Acid Extractable Potassium; Colwell Phosphorus, Phosphorous Buffer Index (PBI), BSES Phosphorus, Silicon; Available Micronutrients Zinc, Manganese, Iron, Copper, Boron, Silicon; HCl Extractable Zinc; Total Carbon (TC), Total Nitrogen (TN), TC/TN Ratio, Organic Matter; Organic Carbon (W-B); Basic Colour, Basic Texture.	\$140.00	\$154.00
RA-PACK-017	Agricultural Basic Home Includes pH and EC (1:5 water); Exchangeable Sodium, Potassium, Calcium, Magnesium, Cation Exchange Capacity; Bray I Phosphorus; Total Carbon (TC), Total Nitrogen (TN), TC/TN Ratio, Organic Matter.	\$60.00	\$66.00

Full Analytical Services Price List - Edition: 20.1.3

All suites have preparation and digest/extract charges included.

ITEM CODE	OTHER SOIL SUITES	PRICE excl. GST	PRICE incl. GST
RA-PACK-004	Agricultural - Standard A-1 Includes pH and EC (1:5 water); Exchangeable Sodium, Potassium, Calcium, Magnesium, Hydrogen, Aluminium, Cation Exchange Capacity; Bray I Phosphorus; Total Carbon (TC), Total Nitrogen (TN), Organic Matter; Basic Colour, Basic Texture.	\$75.00	\$82.50
RA-PACK-018	Agricultural - Standard A-2 Includes pH and EC (1:5 water); Exchangeable Sodium, Potassium, Calcium, Magnesium, Hydrogen, Aluminium, Cation Exchange Capacity; Colwell Phosphorus; Total Carbon (TC), Total Nitrogen (TN), Organic Matter; Basic Colour, Basic Texture.	\$75.00	\$82.50
RA-PACK-013	Agricultural - Standard B Includes pH and EC (1:5 water); Available Ammonium, Nitrate, Sulfur; Exchangeable Sodium, Potassium, Calcium, Magnesium, Hydrogen, Aluminium, Hydrogen, Cation Exchange Capacity; Bray I and II Phosphorus; Available Micronutrients Zinc, Manganese, Iron, Copper, Boron, Silicon; Basic Colour, Basic Texture.	\$90.00	\$99.00
RA-PACK-041	Agricultural Sugar Cane Basic Includes Texture, Colour, Organic Carbon (W/B), pH/EC (H ₂ O), pH (CaCl ₂), EC-SE (Calculation), Phosphorus (Colwell, BSES), Phosphorus Buffer Index, Potassium (Nitric), Exchangeable Cations (Ammonium Acetate), Aluminium (KCl), Sulfur (MCP), and Silicon (BSES, CaCl ₂).	\$120.00	\$132.00
RA-PACK-043	Agricultural Sugar Cane Full Includes Texture, Colour, Organic Carbon (W/B), pH/EC (H ₂ O), pH (CaCl ₂), EC-SE (Calculation), Phosphorus (Colwell, BSES), Phosphorus Buffer Index, Potassium (Nitric), Exchangeable Cations (Ammonium Acetate), Aluminium (KCl), Sulfur (MCP), Silicon (BSES, CaCl ₂), Zinc (HCl), Iron/Copper/Zinc/Manganese (DTPA), Chloride (H ₂ O), Ammonium/Nitrate (KCl) and Buffer pH.	\$160.00	\$176.00
RA-PACK-042	Agricultural Sugar Cane Standard Includes Texture, Colour, Organic Carbon (W/B), pH/EC (H ₂ O), pH (CaCl ₂), EC-SE (Calculation), Phosphorus (Colwell, BSES), Phosphorus Buffer Index, Potassium (Nitric), Exchangeable Cations (Ammonium Acetate), Aluminium (KCl), Sulfur (MCP), Silicon (BSES, CaCl ₂), Zinc (HCl) and Iron/Copper/Zinc/Manganese (DTPA).	\$140.00	\$154.00
SS-PACK-113	Haney – Basic Carbon and Nitrogen Includes Water extractable Nitrate/Ammonium, Total Water extractable Nitrogen and Organic Carbon, Inorganic Nitrogen (Calc), Organic Nitrogen (Calc), Water extractable Organic Carbon: Organic Nitrogen Ratio (Calc).	\$60.00	\$66.00
SS-PACK-114	Haney – Basic Nutrients Includes Haney (H3A) extractable Nitrate, Ammonium, Calcium, Magnesium, Potassium, Sodium, Phosphorus, Sulfur, Zinc, Manganese, Iron, Copper, Aluminium.	\$50.00	\$55.00
SS-PACK-115	Haney – Basic Soil Health Includes Solvita CO ₂ respiration, Water extractable Nitrate, Ammonium; Total Water extractable Nitrogen and Organic Carbon; Inorganic Nitrogen (Calc), Organic Nitrogen (Calc), Water extractable Organic Carbon: Organic Nitrogen Ratio (Calc) and Haney Soil Health Score (Calc).	\$100.00	\$110.00
SS-PACK-116	Haney – Routine Soil Health Includes Solvita CO ₂ respiration, Water extractable Nitrate, Ammonium; Total Water extractable Nitrogen and Organic Carbon; Inorganic Nitrogen (Calc), Organic Nitrogen (Calc), Water extractable Organic Carbon: Organic Nitrogen Ratio (Calc) and Haney Soil Health Score (Calc). Haney (H3A) extractable Nitrate, Ammonium, Calcium, Magnesium, Potassium, Sodium, Phosphorus, Sulfur, Zinc, Manganese, Iron, Copper, Aluminium.	\$150.00	\$165.00

Full Analytical Services Price List - Edition: 20.1.3

All suites have preparation and digest/extract charges included.

ITEM CODE	OTHER SOIL SUITES (CONT.)	PRICE excl. GST	PRICE incl. GST
SS-PACK-117	Haney – Total Soil Health Includes Solvita CO ₂ respiration, Water extractable Nitrate, Ammonium; Total Water extractable Nitrogen and Organic Carbon; Inorganic Nitrogen (Calc), Organic Nitrogen (Calc), Water extractable Organic Carbon: Organic Nitrogen Ratio (Calc) and Haney Soil Health Score (Calc). Haney (H3A) extractable Nitrate, Ammonium, Calcium, Magnesium, Potassium, Sodium, Phosphorus, Sulfur, Zinc, Manganese, Iron, Copper, Aluminium. Also includes pH, EC; Total Carbon, Total Nitrogen, estimated Organic Matter and Labile Carbon.	\$200.00	\$220.00
NT-PACK-005	Mehlich III Basic Includes pH and EC (1:5 water); Chloride Estimate, Extractable Mehlich III Phosphorus, Sodium, Potassium, Calcium, Magnesium, Cation Exchange Capacity, Exchangeable Sodium Percentage.	\$55.00	\$60.50
SS-PACK-037	Mehlich III Exchangeable Cations and Micronutrients Includes Mehlich III Extractable Sodium, Potassium, Calcium, Magnesium, Phosphorus, Sulfur, Aluminium, Iron, Copper, Zinc, Manganese, Boron.	\$60.00	\$66.00
NT-PACK-001	Mehlich III Standard Includes pH and EC (1:5 water); Available Calcium, Magnesium, Potassium, Ammonium, Nitrate, Phosphate, Sulfur; Mehlich III Extractable Sodium, Potassium, Calcium, Magnesium, Hydrogen/Aluminium (calculation) Cation Exchange Capacity; Mehlich III Extractable Phosphorus, Bray II Phosphorus; Total Nitrogen (TN), Total Carbon (TC), Organic Matter; Available Micronutrients Iron, Copper, Zinc, Manganese, Silicon, Boron; Paramagnetism; Basic Colour and Basic Texture.	\$100.00	\$110.00
SS-PACK-140	Microbial Biomass Assessment - Soil Includes biomasses of 12 microbial groups relevant for soil quality, health and function.	\$259.00	\$284.90
SS-PACK-014	Pesticide Screen 1b Includes Organo-chlorines (OC), Organo-phosphates (OP), Polychlorinated Biphenyls (PCB).	\$100.00	\$110.00
RA-PACK-007	Reef Wise Pack - 1 Includes Colwell Phosphorus; Phosphorous Buffer Index (PBI); BSES Extractable Phosphorous; Organic Carbon (W-B).	\$60.00	\$66.00
RA-PACK-016	Reef Wise Pack - 2 Includes Colwell Phosphorus; Phosphorus Buffer Index (PBI); BSES Extractable Phosphorus, Silicon; CaCl ₂ Extractable Silicon; HNO ₃ Extractable Potassium; HCl Extractable Zinc; Organic Carbon (W-B).	\$75.00	\$82.50
SS-PACK-118	Residue Screen - Complete Includes RS1 + RS2 (OCOP Pesticides + Synthetic Pyrethroids – 80+ Residues + Herbicide and Fungicide – 40+ Residue)	\$280.00	\$308.00
SS-PACK-119	Residue Screen - Complete + Glyphosate Includes RS1 + RS2 (OCOP Pesticides + Synthetic Pyrethroids – 80+ Residues + Herbicide and Fungicide – 40+ Residue) + Glyphosate Screens.	\$380.00	\$418.00
SS-PACK-052	Soluble Nitrogen - Soil Includes KCl extractable Nitrate and Ammonium.	\$25.00	\$27.50
SS-PACK-045	Total Acid Extractable - Heavy Metals (ICPMS) Includes Lead, Cadmium, Arsenic, Nickel, Aluminium, Mercury, Chromium, Silver, Selenium.	\$50.00	\$55.00
RA-PACK-009	Total Acid Extractable Cobalt, Molybdenum, Selenium	\$30.00	\$33.00
RA-PACK-012	Total Acid Extractable Cobalt, Molybdenum, Selenium, Phosphorus	\$40.00	\$44.00
RA-PACK-008	Total Acid Extractable Elements Includes Sodium, Potassium, Calcium, Magnesium, Sulfur, Phosphorus, Silicon, Cobalt, Molybdenum, Selenium, Zinc, Manganese, Iron, Copper, Boron, Aluminium.	\$80.00	\$88.00

ITEM CODE	INDIVIDUAL SOIL TESTS	PRICE excl. GST	PRICE incl. GST
SS-SING-038	Chloride - Soluble	\$15.00	\$16.50
SS-SING-218	Colour (Munsell Soil Colour Classification)	\$8.00	\$8.80
SS-SING-085	Emerson Dispersion Index (Loveday and Pyle, 1973)	\$20.00	\$22.00
SS-PREP-015	Exchangeable Cation Pre-treatment for Soluble Salts Includes pretreatment with aqueous ethanol and aqueous glycerol to remove soluble salts. Recommended on soils with EC > 0.3 dS/m.	\$10.00	\$11.00
SS-PREP-020	Exchangeable Cation Suppression of Carbonates Includes pretreatment with aqueous ethanol and aqueous glycerol to remove soluble salts then extraction with 1 M Alcoholic NH ₄ Cl to suppress solid phase carbonates. Testing according to Method 15C1 with other agricultural tests.	\$40.00	\$44.00
SS-SING-204	Fertility Report - Ferti-Tech Soil/Leaf Report Preparation	\$30.00	\$33.00
SS-SING-071	Fertility Report - Keycrobe Soil/Leaf Report Preparation	\$30.00	\$33.00
SS-SING-234	Fertility Report - Vital Soils Report Preparation	\$30.00	\$33.00
SS-PREP-013	International Quarantine Handling Charge	\$70.00	\$77.00
SS-SING-001	Moisture Content - As Received (%) at 105 °C Oven-dry moisture content as a per cent of the 'as-received' sample (105 °C).	\$10.00	\$11.00
SS-SING-066	pH (1:5 CaCl₂)	\$12.50	\$13.75
SS-SING-034	Phosphorus - Olsen Includes Olsen Phosphorous - a measure of the intensity of Phosphorus.	\$15.00	\$16.50
SS-SING-032	Phosphorus - Total Acid Extractable (includes preparation)	\$30.00	\$33.00
SS-SING-037	Phosphorus Buffer Index (PBI)	\$17.50	\$19.25
SS-SING-154	Phytophthora and Pythium	\$220.00	\$242.00
SS-SING-076	Potassium - Colwell	\$15.00	\$16.50
SS-PREP-018	Saturated Paste Extract Includes extraction of saturated paste (14A3). Please select required analytical parameters from the waters codes.	\$50.00	\$55.00
SS-SING-027	Silica - Total Includes specialised NaOH high temperature fusion extraction of silicon.	\$120.00	\$132.00
SS-SING-209	SOLVITA - Soil CO₂ Burst Includes measurement of carbon dioxide released from soil due to biological activity.	\$60.00	\$66.00
SS-SING-086	Texture - Australian Soil Classification (Isbell and NCST, 2016)	\$20.00	\$22.00
SS-PREP-007	Total Dry Weight - Air dry basis Mass of the sample dried at 40 °C.	\$6.00	\$6.60

SOIL CARBON TESTING

All suites have preparation and digest/extract charges included.

ITEM CODE	SOIL CARBON SUITES	PRICE excl. GST	PRICE incl. GST
SS-PACK-139	Total Organic Carbon (TOC) on Subsoils under 2018 CFI Methodology Includes Total Organic Carbon by LECO, gravel content, air-dry mass and gravimetric water content on the air-dry soil.	\$60.00	\$66.00
SS-PACK-024	Total Organic Carbon (TOC) on Topsoils under 2018 CFI Methodology Includes Total Organic Carbon by LECO, gravel content, air-dry mass and gravimetric water content on the air-dry soil.	\$40.00	\$44.00

No additional charges if a suite is selected.

ITEM CODE	INDIVIDUAL SOIL CARBON TESTS	PRICE excl. GST	PRICE incl. GST
SS-SING-018	Carbon - Labile	\$17.50	\$19.25
SS-SING-062	Carbon - Organic by Walkley Black	\$30.00	\$33.00
SS-SING-061	Carbon - Total Organic by LECO	\$25.00	\$27.50
SS-PREP-023	Sample Compositing for Soil Carbon Subsoils (30-100 cm) Includes compositing charge for composite subsoil samples tested under 2018 CFI methodology.	\$35.00	\$38.50
SS-PREP-022	Sample Compositing for Soil Carbon Topsoils (0-30 cm) Includes compositing charge for composite topsoil samples tested under 2018 CFI methodology.	\$15.00	\$16.50

FERTILISER TESTING

All suites have preparation and digest/extract charges included.

ITEM CODE	FERTILISER SUITES	PRICE excl. GST	PRICE incl. GST
FA-PACK-003	Fertiliser - Liquid Analysis Includes pH, EC, Total Dissolved Salts (TDS) (by calc.); Total Nitrogen, Total Phosphorus; Sodium, Potassium, Calcium, Magnesium, Sulfur; Silicon, Cobalt, Molybdenum, Zinc, Manganese, Iron, Copper and Boron.	\$180.00	\$198.00
FA-PACK-001	Fertiliser - Solid Analysis Includes Moisture, pH, EC; Total Nitrogen (TN), Total Carbon (TC); Sodium, Potassium, Calcium, Magnesium, Phosphorus, Sulfur, Silicon, Cobalt, Molybdenum, Zinc, Manganese, Iron, Copper, Boron.	\$180.00	\$198.00
FA-PACK-009	Gypsum Assessment - Fertiliser Includes Moisture Content, Calcium, Magnesium, Sodium and Sulfur.	\$90.00	\$99.00
FA-PACK-014	Lime Assessment - Basic Fertiliser Includes Moisture Content, Calcium, Magnesium, Acid Neutralising Capacity (ANC-BT) and Neutralising Value.	\$110.00	\$121.00
FA-PACK-010	Lime Assessment - Coarse Fertiliser Includes Moisture Content, Calcium, Magnesium, Acid Neutralising Capacity (ANC-BT), Neutralising Value and Dry Sieving Particle Size Analysis including > 1 mm, 0.85-1 mm, 0.3-0.85 mm, < 0.3 mm fractions.	\$140.00	\$154.00
FA-PACK-011	Lime Assessment - Fine Fertiliser Includes Moisture Content, Calcium, Magnesium, Acid Neutralising Capacity (ANC-BT), Neutralising Value and Laser Diffraction Particle Size Analysis including < 0.01 mm, 0.01-0.02 mm, 0.02-0.03 mm, 0.03-0.04 mm, 0.04-0.05 mm, 0.05-0.06 mm, 0.06-0.07 mm, 0.07-0.08 mm, 0.08-0.09 mm, 0.09-0.1 mm, 0.1-0.125 mm, 0.125-0.25 mm, 0.25-0.5 mm, 0.5-1.0 mm, > 1.0 mm fractions.	\$210.00	\$231.00
FA-PACK-007	NPK Analysis - Fertiliser Includes Total Nitrogen, Total Phosphorus, Total Potassium.	\$90.00	\$99.00
FA-PACK-012	Particle Size Analysis - Dry Sieving - Coarse Fertiliser Dry sieving Particle Size Analysis including > 1 mm, 0.85-1 mm, 0.3-0.85 mm, < 0.3 mm fractions.	\$50.00	\$55.00
FA-PACK-013	Particle Size Analysis - Laser Diffraction - Fine Fertiliser Laser Diffraction Particle Size Analysis including 2000 to 0.01 µm. Size fractions include < 0.01 mm, 0.01-0.02 mm, 0.02-0.03 mm, 0.03-0.04 mm, 0.04-0.05 mm, 0.05-0.06 mm, 0.06-0.07 mm, 0.07-0.08 mm, 0.08-0.09 mm, 0.09-0.1 mm, 0.1-0.125 mm, 0.125-0.25 mm, 0.25-0.5 mm, 0.5-1.0 mm, > 1.0 mm fractions. Price dependent upon application and sample amounts.	\$120.00	\$132.00
FA-PACK-008	Soluble Nitrogen - Fertiliser Includes water extractable nitrate and ammonium on fertilisers	\$60.00	\$66.00
FA-PACK-005	Soluble Phosphorus I - Fertiliser Includes Total Phosphorus, Total Soluble Phosphorus, Water Soluble Phosphorus, 2% Citrate Soluble Phosphorus.	\$90.00	\$99.00
FA-PACK-006	Soluble Phosphorus II - Fertiliser Includes Total Phosphorus, Total Soluble Phosphorus, Water Soluble Phosphorus, 2% Citrate Soluble Phosphorus and 2% Formic Acid Soluble Phosphorus.	\$110.00	\$121.00
FA-PACK-002	Total Acid Extractable - Heavy Metals (ICPMS) - Fertiliser Includes Lead, Cadmium, Arsenic, Nickel, Aluminium, Mercury, Chromium, Silver, Selenium.	\$75.00	\$82.50

ITEM CODE	INDIVIDUAL FERTILISER TESTS	PRICE excl. GST	PRICE incl. GST
SS-SING-238	Chloride – Fertiliser Includes water soluble chloride on fertilisers.	\$40.00	\$44.00
SS-PREP-014	Fertiliser Handling Charge	\$50.00	\$55.00
SS-SING-067	Fluoride - Extractable	\$30.00	\$33.00
SW-SING-124	Insoluble Matter – Liquid Fertilisers Includes insoluble matter mg/L.	\$30.00	\$33.00
SS-SING-240	Insoluble Matter – Solid Fertilisers Includes insoluble matter mg/kg.	\$40.00	\$44.00
SS-SING-001	Moisture Content - As Received (%) at 105 °C Oven-dry moisture content as a per cent of the 'as-received' sample (105 °C).	\$10.00	\$11.00
SS-SING-233	Moisture Content - As Received (%) at 40 °C Moisture content as a per cent of air-dry equivalent soil (40 °C).	\$10.00	\$11.00
SS-SING-193	Solubility - Fertiliser Includes maximum solubility at 20 °C.	\$40.00	\$44.00
SW-SING-120	Specific Gravity - Hydrometer method Includes specific gravity and temperature on sample volumes greater than 200 mL.	\$20.00	\$22.00
SW-SING-035	Specific Gravity - Volumetric method Includes specific gravity and temperature on samples with small volumes.	\$20.00	\$22.00

PLANT TISSUE AND GRAIN TESTING

All suites have preparation and digest/extract charges included.

ITEM CODE	PLANT TISSUE AND GRAIN SUITES	PRICE excl. GST	PRICE incl. GST
PA-PACK-001	Plant Testing Includes Total Nitrogen (TN), Total Carbon (TC), Total Sulfur (TS); Sodium, Potassium, Calcium, Magnesium, Phosphorus, Silicon, Cobalt, Molybdenum, Zinc, Manganese, Iron, Copper, Boron.	\$50.00	\$55.00
PA-PACK-004	Plant Testing with Leaf Washing Includes Total Nitrogen (TN), Total Carbon (TC), Total Sulfur (TS); Sodium, Potassium, Calcium, Magnesium, Phosphorus, Silicon, Cobalt, Molybdenum, Zinc, Manganese, Iron, Copper, Boron, Leaf Washing.	\$55.00	\$60.50
SS-PACK-118	Residue Screen - Complete Includes RS1 + RS2 (OCOP Pesticides + Synthetic Pyrethroids – 80+ Residues + Herbicide and Fungicide – 40+ Residue)	\$280.00	\$308.00
PA-PACK-006	Sap Analysis Includes Moisture, pH, EC, Brix; Nitrate, Ammonium; Chloride; Calcium, Magnesium, Sodium, Potassium, Phosphorus, Sulfur, Boron, Copper, Iron, Manganese, Zinc, Aluminium, Molybdenum and Cobalt. Data Only (no interpretation).	\$70.00	\$77.00
PA-PACK-005	Soluble Nitrogen Includes Nitrate and Ammonium.	\$25.00	\$27.50

No additional charges if a suite is selected.

ITEM CODE	INDIVIDUAL PLANT TISSUE AND GRAIN TESTS	PRICE excl. GST	PRICE incl. GST
SS-SING-160	Brix Reading	\$10.00	\$11.00
SS-SING-038	Chloride - Soluble	\$15.00	\$16.50
SS-SING-225	Dry Matter Content (%) at 105 °C Proportion of oven-dry solid in a 'as-received' sample (105 °C).	\$10.00	\$11.00
SS-SING-204	Fertility Report - Ferti-Tech Soil/Leaf Report Preparation	\$30.00	\$33.00
SS-SING-071	Fertility Report - Keycrobe Soil/Leaf Report Preparation	\$30.00	\$33.00
SS-SING-022	Iodine - NaOH Extraction	\$70.00	\$77.00
SS-PREP-009	Leaf Washing Please advise with samples.	\$5.00	\$5.50
SS-SING-136	Protein (Crude) Includes Total Nitrogen (TN) and Crude Protein (Calculation).	\$30.00	\$33.00

FEED AND PRODUCE TESTING

All suites have preparation and digest/extract charges included.

ITEM CODE	FEED SUITES	PRICE excl. GST	PRICE incl. GST
SS-PACK-107	<p>Feed Package - Cereal Grain (NIR- Near-Infrared Analysis) For oat, barley, wheat and triticale grains. Includes Dry Matter/Moisture (DM/Moi), Crude Protein (CP), Acid Detergent Fibre (ADF), Neutral Detergent Fibre (NDF), Dry Matter Digestibility (DMD), Dry Organic Matter Digestibility (DOMD) and Metabolisable Energy (ME), Starch and Sugar (St/S), Fat for oats. Turnaround time: 4-5 working days.</p>	\$80.00	\$88.00
SS-PACK-109	<p>Feed Package - Horse (NIR- Near-Infrared Analysis) For hay, fresh cut pasture and cereal grains Includes Dry Matter/Moisture (DM/Moi), Crude Protein (CP), Acid Detergent Fibre (ADF), Neutral Detergent Fibre (NDF), Dry Matter Digestibility (DMD), Dry Organic Matter Digestibility (DOMD) and Metabolisable Energy (ME) and Horse Digestible Energy (MJ/kg). Turnaround time: 4-5 working days.</p>	\$80.00	\$88.00
SS-PACK-108	<p>Feed Package - Pelleted (NIR- Near-Infrared Analysis) For pelleted and mixed feeds. Includes Dry Matter/Moisture (DM/Moi), Crude Protein (CP), Acid Detergent Fibre (ADF), Neutral Detergent Fibre (NDF), Dry Matter Digestibility (DMD), Dry Organic Matter Digestibility (DOMD) and Metabolisable Energy (ME), Fat and Ash. Turnaround time: 4-5 working days.</p>	\$80.00	\$88.00
SS-PACK-106	<p>Feed Package - Quality (NIR- Near-Infrared Analysis) For hay, fresh cut pasture, straw, pasture silage and maize silage. Includes Dry Matter/Moisture (DM/Moi), Crude Protein (CP), Acid Detergent Fibre (ADF), Neutral Detergent Fibre (NDF), Dry Matter Digestibility (DMD), Dry Organic Matter Digestibility (DOMD) and Metabolisable Energy (ME). Depending on fodder type can include: Water Soluble Carbohydrates (WSC), Starch and Sugar (St/S), Fat and Ash. Turnaround time: 4-5 working days.</p>	\$80.00	\$88.00
SS-PACK-145	<p>Soluble Nitrogen - Feed Includes Nitrate and Ammonium.</p>	\$30.00	\$33.00

No additional charges if a suite is selected.

ITEM CODE	INDIVIDUAL FEED TESTS	PRICE excl. GST	PRICE incl. GST
SS-SING-239	<p>Cyanide (Total Prussic Acid in Plant/Feed samples) Includes sample preparation and Total Cyanide.</p>	\$100.00	\$110.00

All suites have preparation and digest/extract charges included.

ITEM CODE	PRODUCE SUITES	PRICE excl. GST	PRICE incl. GST
SS-PACK-084	<p>Produce Metals 1 (NATA Subcontracted) Includes Cadmium and Lead.</p>	\$95.00	\$104.50
SS-PACK-085	<p>Produce Metals 2 (NATA Subcontracted) Includes Cadmium, Lead and Mercury.</p>	\$110.00	\$121.00
SS-PACK-083	<p>Produce MRL - CR006 (C3/C5 Extended Residue) Includes Standard Residue Screen - Analysis of Pesticides (Organo-chlorines (OC), Organo-phosphates (OP)), Herbicides, Phenols, Carbamates, Acaricides, Synthetic Pyrethroids, Fungicides, Other.</p>	\$350.00	\$385.00

Agricultural Price List - Edition: 20.1.3

All suites have preparation and digest/extract charges included.

ITEM CODE	PRODUCE SUITES (CONT.)	PRICE excl. GST	PRICE incl. GST
SS-PACK-082	Produce MRL - CR006.2 (C3 Residue Screen) Includes Standard Residue Screen - Analysis of Pesticides (Organo-chlorines (OC), Organo-phosphates (OP)), Herbicides, Phenols, Carbamates, Acaricides, Synthetic Pyrethroids, Fungicides, Other.	\$210.00	\$231.00
SS-PACK-144	Produce MRL Organic Screen (C3 Residue Screen + Glyphosate+AMPA screen) Includes RS1 + RS2 (OCOP Pesticides + Synthetic Pyrethroids – 80+ Residues + Herbicide and Fungicide – 40+ Residue) + Glyphosate Screens.	\$330.00	\$363.00

No additional charges if a suite is selected.

ITEM CODE	INDIVIDUAL PRODUCE TESTS	PRICE excl. GST	PRICE incl. GST
SS-SING-214	Produce - Single Metal Includes Cadmium or Lead or Mercury. Includes preparation.	\$80.00	\$88.00
SS-SING-211	Produce Bacto 1 Includes Produce Ecoli.	\$45.00	\$49.50
SS-SING-212	Produce Bacto 2 Includes Produce Salmonella.	\$60.00	\$66.00
SS-SING-213	Produce Bacto 3 Includes Produce Listeria.	\$55.00	\$60.50

COMPOST, BIOCHAR AND HAIR TESTING

Basic Compost Testing Only. See Compost and Landscape Soils Price List for comprehensive list.

ITEM CODE	COMPOST SUITES	PRICE excl. GST	PRICE incl. GST
CA-PACK-004	<p>Compost Available Nutrients Includes pH and EC; Soluble (Ca, Mg, K, P), Dissolved (NH₄, NO₃, S); Exchangeable (Ca, Mg, Na, K, H, Al, ECEC); Bray I and II Phosphorus; Colwell Phosphorus; Available Micronutrients (Fe, Cu, Mg, Zn, B, Si); TC, TN, TC/TN Ratio, Organic Matter. Note: 200 g of sample is required.</p>	\$120.00	\$132.00
CA-PACK-019	<p>Compost Total and Available Nutrients Includes Moisture, pH, EC; TC, TN, TC/TN Ratio, Organic Matter; Total (Na, K, Ca, Mg, P, S, Si, Co, Mo, Fe, Mn, Zn, Cu, B); Soluble (Ca, Mg, K, P), Dissolved (NH₄, NO₃, S); Exchangeable (Ca, Mg, Na, K, H, Al, ECEC); Bray I and II Phosphorus; Colwell Phosphorus; Available Micronutrients (Fe, Cu, Mg, Zn, B, Si); TC, TN, TC/TN Ratio, Organic Matter. Note: 200 g of sample is required.</p>	\$190.00	\$209.00
CA-PACK-020	<p>Compost Total and Available Nutrients plus Heavy Metals Includes Moisture, pH, EC; TC, TN, TC/TN Ratio, Organic Matter; Total (Na, K, Ca, Mg, P, S, Si, Co, Mo, Fe, Mn, Zn, Cu, B, Hg, Pb, Ni, Cd, Cr, Se, As); Soluble (Ca, Mg, K, P), Dissolved (NH₄, NO₃, S); Exchangeable (Ca, Mg, Na, K, H, Al, ECEC); Bray I and II Phosphorus; Colwell Phosphorus; Available Micronutrients (Fe, Cu, Mg, Zn, B, Si); TC, TN, TC/TN Ratio, Organic Matter. Note: 200 g of sample is required.</p>	\$210.00	\$231.00
CA-PACK-001	<p>Compost Total Nutrients Includes Moisture, pH, EC; TC, TN, TC/TN Ratio, Organic Matter; Total (Na, K, Ca, Mg, P, S, Si, Co, Mo, Fe, Mn, Zn, Cu, B). Note: 200 g of sample is required.</p>	\$100.00	\$110.00

All suites have preparation and digest/extract charges included.

ITEM CODE	BIOCHAR SUITES	PRICE excl. GST	PRICE incl. GST
SS-PACK-111	<p>Biochar Totals Analysis Includes Moisture Content, Ash Content; pH, EC (1:10 water); Total Nitrogen (TN), Total Carbon (TC), Total Organic Carbon (TOC), TC/TN Ratio, Organic Matter; Total Sodium, Potassium, Calcium, Magnesium, Phosphorus, Sulfur, Silicon, Cobalt, Molybdenum, Zinc, Manganese, Iron, Copper, Boron; Heavy Metals Silver, Arsenic, Lead, Chromium, Nickel, Cadmium, Mercury; Acid Neutralising Capacity (ANC). Note: 200 g of sample is required to complete testing.</p>	\$200.00	\$220.00
SS-PACK-143	<p>Soil Testing for Biochar Application Includes Moisture, pH, EC (1:5 water); Total Organic Carbon (TOC), Total Nitrogen (TN), TC/TN Ratio; Available Nitrogen (Nitrate); Soluble Chloride; Total Metals (Sb, As, Be, B, Cd, Co, Cu, Cr, Pb, Mn, Mo, Ni, Se, Sn, V, Zn, S, P, Hg); Soluble Cations (Ca, Mg, K, Na). Note: 300 g of sample is required to complete testing.</p>	\$205.00	\$225.50

All suites have preparation and digest/extract charges included.

ITEM CODE	HAIR SUITES	PRICE excl. GST	PRICE incl. GST
SS-PACK-050	<p>Hair Tissue Mineral Analysis (HTMA) - Human and Animal Includes Antimony, Aluminium, Arsenic, Barium, Beryllium, Bismuth, Boron, Cadmium, Calcium, Chromium, Cobalt, Copper, Iron, Lead, Lithium, Magnesium, Manganese, Mercury, Molybdenum, Nickel, Phosphorus, Potassium, Selenium, Silver, Sodium, Strontium, Sulfur, Thallium, Thorium, Uranium, Vanadium and Zinc. Data only (no interpretation), Nitric Acid digest, minimum of 0.5 g of hair required which is equivalent to one heaped tablespoon. Collect from nape as close as possible to scalp as this reflects new growth. Provide sample double bagged to avoid contamination when opened at the laboratory.</p>	\$80.00	\$88.00

AGRICULTURAL WATER TESTING

All suites have preparation and digest/extract charges included.

ITEM CODE	AGRICULTURAL WATER SUITES	PRICE excl. GST	PRICE incl. GST
SW-PACK-007	Agricultural Stock Use Includes pH, EC, Total Dissolved Salts (TDS) (calculation); Water Hardness; Total Alkalinity; Copper, Lead, Cadmium, Zinc, Arsenic, Selenium, Iron, Manganese, Silver, Chromium, Nickel, Aluminium, Mercury; Nitrate, Ammonium, Phosphate; Faecal Coliforms.	\$120.00	\$132.00
SW-PACK-064	Bacteria for Freshcare Accreditation (NATA Accredited) Includes E.Coli.	\$60.00	\$66.00
SW-PACK-005	Irrigation and Livestock Suitability – Comprehensive Includes pH, EC, Total Dissolved Salts (TDS) (calculation), Water Hardness, Total Alkalinity, Turbidity, Total Coliforms and E.Coli Bacteria; Aluminium, Arsenic, Cadmium, Chromium, Copper, Iron, Manganese, Nickel, Lead, Zinc; Nitrate, Ammonium, Phosphate; Sodium, Potassium, Calcium, Magnesium, Chloride, Sulfate, Sodium Absorption Ratio (SAR).	\$150.00	\$165.00
SW-PACK-004	Irrigation Suitability - Basic Includes pH, EC, Total Dissolved Salts (TDS) (calculation), Iron and Manganese; Sodium, Potassium, Calcium, Magnesium, Sulfate, Chloride; Turbidity, Total Alkalinity, Water Hardness (calculation), Saturation Index; Sodium Absorption Ratio (SAR).	\$80.00	\$88.00
SW-PACK-024	Pesticide Screen 2a - Low Level Includes Low Level Pesticide Analysis: Organo-chlorines (OC) and Organo-phosphates (OP).	\$170.00	\$187.00
SW-PACK-002	Water Quality - Basic For drinking and domestic use. Includes pH, EC, Total Dissolved Salts (TDS) (calculation), Water Hardness, Total Alkalinity, Turbidity, Total Coliforms, E.Coli Bacteria.	\$70.00	\$77.00
SW-PACK-003	Water Quality - Comprehensive For drinking and domestic use. Includes pH, EC, Total Dissolved Salts (TDS) (calculation), Water Hardness, Total Alkalinity, Turbidity, Total Coliforms and E.Coli Bacteria; Nitrate; Aluminium, Arsenic, Cadmium, Chromium, Copper, Iron, Manganese, Nickel, Lead, Zinc.	\$110.00	\$121.00

No additional charges if a suite is selected.

ITEM CODE	INDIVIDUAL AGRICULTURAL WATER TESTS	PRICE excl. GST	PRICE incl. GST
SW-SING-022	Algae - Basic ID and Count (Blue Green Algae only) by Microscopic Identification	\$110.00	\$121.00
SW-SING-123	Algae - Full ID and Count by Microscopic Identification	\$160.00	\$176.00

COMPOST AND LANDSCAPE SOIL ANALYTICAL SERVICES

COMPOST TESTING

All packs have preparation and digest/extract charges included.

ITEM CODE	AS4454 COMPOST PRODUCT SUITES	PRICE excl. GST	PRICE incl. GST
CA-PACK-003	<p>Composted Product Analysis under AS4454</p> <p>Includes Bulk Density; Moisture, pH, EC; Wettability; TOC, TN, TC/TN Ratio; NO₃, NH₄, PO₄, NH₄/NO₃ Ratio; Particle Size > 5 mm and < 16 mm; Physical Contaminants - Glass, Metal, Rigid Plastics > 2mm, Light Plastics > 5 mm, Stones and Clay > 5 mm; Totals (Na, K, Ca, Mg, P, S, Fe, Mn, Zn, Cu, B, Hg, Pb, Ni, Cd, Cr, Se, As); Bioassay; Plant Propagules, Nitrogen Drawdown Index; Low Level Pesticides (Organo-chlorines, Polychlorinated Biphenyls); Salmonella, Ecoli, Faecal Coliforms. Acid Neutralising Capacity required if pH > 8.0. Note: 4 kg of sample required.</p>	\$450.00	\$495.00
CA-PACK-011	<p>Mature Compost Analysis under AS4454</p> <p>Includes Bulk Density; Moisture, pH, EC; Wettability; TOC, TN, TC/TN Ratio; NO₃, NH₄, PO₄, NH₄/NO₃ Ratio; Particle Size > 5 mm and < 16 mm; Physical Contaminants - Glass, Metal, Rigid Plastics > 2 mm, Light Plastics > 5 mm, Stones and Clay > 5 mm; Totals (Na, K, Ca, Mg, P, S, Fe, Mn, Zn, Cu, B, Hg, Pb, Ni, Cd, Cr, Se, As); Bioassay; Plant Propagules, Nitrogen Drawdown Index, Specific Oxygen Uptake Rate, Solvita; Low Level Pesticides (Organo-chlorines, Polychlorinated Biphenyls); Salmonella, Ecoli, Faecal Coliforms. Acid Neutralising Capacity required if pH > 8.0. Note: 4 kg of sample required.</p>	\$600.00	\$660.00
CA-PACK-023	<p>Pasteurized Product Analysis under AS4454</p> <p>Includes Moisture, pH, EC; Wettability; TOC, TN, TC/TN Ratio; PO₄; Particle Size > 5 mm and < 16 mm; Physical Contaminants - Glass, Metal, Rigid Plastics > 2 mm, Light Plastics > 5 mm, Stones and Clay > 5 mm; Totals (Na, K, Ca, Mg, P, S, Fe, Mn, Zn, Cu, B, Hg, Pb, Ni, Cd, Cr, Se, As); Plant Propagules; Low Level Pesticides (Organo-chlorines, Polychlorinated Biphenyls); Salmonella, Ecoli, Faecal Coliforms. Acid Neutralising Capacity required if pH > 8.0. Note: 4 kg of sample required.</p>	\$320.00	\$352.00
CA-PACK-024	<p>Raw Mulch Analysis under AS4454</p> <p>Includes pH, EC; TOC, TN, TC/TN Ratio; Particle Size > 5 mm and < 16 mm; Physical Contaminants - Glass, Metal, Rigid Plastics > 2mm, Light Plastics > 5 mm, Stones and Clay > 5 mm; Totals (Na, K, Ca, Mg, P, S, Fe, Mn, Zn, Cu, B, Hg, Pb, Ni, Cd, Cr, Se, As); Plant Propagules; Low Level Pesticides (Organo-chlorines, Polychlorinated Biphenyls). Acid Neutralising Capacity required if pH > 8.0. Note: 4 kg of sample required.</p>	\$180.00	\$198.00

All packs have preparation and digest/extract charges included.

ITEM CODE	AS4454 COMPOST BASIC SUITES	PRICE excl. GST	PRICE incl. GST
CA-PACK-012	<p>Compost Maturity Analysis under AS4454</p> <p>Includes Moisture; NO₃, NH₄, NH₄/NO₃ Ratio; Bioassay; Plant Propagules, Nitrogen Drawdown Index, Specific Oxygen Uptake Rate, Solvita; Salmonella, Ecoli, Faecal Coliforms. Note: 2 kg of sample required.</p>	\$300.00	\$330.00
CA-PACK-005	<p>Compost Soluble Nutrient Monitoring under AS4454</p> <p>Includes Moisture, pH, EC; TOC, TN, TC/TN Ratio; NO₃, NH₄, PO₄, NH₄/NO₃ Ratio. Note: 200 g of sample is required to complete testing.</p>	\$60.00	\$66.00
CA-PACK-013	<p>LECO - Total Carbon, Total Nitrogen under AS4454/AS3743/AS4419</p> <p>Includes Total Carbon (TC) and Total Nitrogen (TN), TC/TN Ratio. Note: 200 g of sample is required to complete testing.</p>	\$25.00	\$27.50

Full Analytical Services Price List - Edition: 20.1.3

All packs have preparation and digest/extract charges included.

ITEM CODE	AS4454 COMPOST BASIC SUITES (CONT.)	PRICE excl. GST	PRICE incl. GST
CA-PACK-014	Nutrients - Water Extractable under AS4454 Includes Moisture, Nitrate, Phosphate, Ammonium (1:5 water). Note: 200 g of sample is required to complete testing.	\$50.00	\$55.00
CA-PACK-010	pH and EC under AS4454 Includes Moisture, pH and EC. Note: 200 g of sample is required to complete testing.	\$40.00	\$44.00

All packs have preparation and digest/extract charges included.

ITEM CODE	BASIC COMPOST SUITES	PRICE excl. GST	PRICE incl. GST
CA-PACK-004	Compost Available Nutrients Includes pH and EC; Soluble (Ca, Mg, K, P), Dissolved (NH ₄ , NO ₃ , S); Exchangeable (Ca, Mg, Na, K, H, Al, ECEC); Bray I and II Phosphorus; Colwell Phosphorus; Available Micronutrients (Fe, Cu, Mg, Zn, B, Si); TC, TN, TC/TN Ratio, Organic Matter. Note: 200 g of sample is required.	\$120.00	\$132.00
CA-PACK-019	Compost Total and Available Nutrients Includes Moisture, pH, EC; TC, TN, TC/TN Ratio, Organic Matter; Total (Na, K, Ca, Mg, P, S, Si, Co, Mo, Fe, Mn, Zn, Cu, B); Soluble (Ca, Mg, K, P), Dissolved (NH ₄ , NO ₃ , S); Exchangeable (Ca, Mg, Na, K, H, Al, ECEC); Bray I and II Phosphorus; Colwell Phosphorus; Available Micronutrients (Fe, Cu, Mg, Zn, B, Si); TC, TN, TC/TN Ratio, Organic Matter. Note: 200 g of sample is required.	\$190.00	\$209.00
CA-PACK-020	Compost Total and Available Nutrients plus Heavy Metals Includes Moisture, pH, EC; TC, TN, TC/TN Ratio, Organic Matter; Total (Na, K, Ca, Mg, P, S, Si, Co, Mo, Fe, Mn, Zn, Cu, B, Hg, Pb, Ni, Cd, Cr, Se, As); Soluble (Ca, Mg, K, P), Dissolved (NH ₄ , NO ₃ , S); Exchangeable (Ca, Mg, Na, K, H, Al, ECEC); Bray I and II Phosphorus; Colwell Phosphorus; Available Micronutrients (Fe, Cu, Mg, Zn, B, Si); TC, TN, TC/TN Ratio, Organic Matter. Note: 200 g of sample is required.	\$210.00	\$231.00
CA-PACK-001	Compost Total Nutrients Includes Moisture, pH, EC; TC, TN, TC/TN Ratio, Organic Matter; Total (Na, K, Ca, Mg, P, S, Si, Co, Mo, Fe, Mn, Zn, Cu, B). Note: 200 g of sample is required.	\$100.00	\$110.00

All packs have preparation and digest/extract charges included.

ITEM CODE	OTHER COMPOST SUITES	PRICE excl. GST	PRICE incl. GST
CA-PACK-008	Compost Water Soluble Nutrients Includes Moisture; Nitrate, Ammonium; Chloride; Calcium, Magnesium, Sodium, Potassium, Phosphorus, Sulfur, Boron, Copper, Iron, Manganese, Zinc, Aluminium, Molybdenum and Cobalt. Note: 200 g of sample is required to complete testing.	\$90.00	\$99.00
SS-PACK-026	Exchangeable Cations - 15D1 - 1 M NH₄OAc Includes exchangeable Sodium, Potassium, Calcium, Magnesium by 1 M NH ₄ OAc at pH 7.0. Pretreatment for soluble salts when EC is > 0.3 dS/m.	\$50.00	\$55.00
CA-PACK-022	Manure Nutrient Testing Includes Moisture, pH, EC (1:5 water); Total Carbon (TC), Total Nitrogen (TN), TC/TN Ratio; Available Nitrogen (Ammonium plus Nitrate); Soluble Chloride; Total Boron, Cadmium, Calcium, Cobalt, Copper, Iron, Lead, Magnesium, Manganese, Molybdenum, Phosphorus, Potassium, Sodium, Sulfur, Zinc; Soluble Boron, Calcium, Copper, Iron, Magnesium, Manganese, Molybdenum, Phosphorus, Potassium, Sodium, Sulfur, Zinc. Note: 300 g of sample is required to complete testing.	\$150.00	\$165.00
SS-PACK-035	SOUR Test Includes Moisture, Volatile Solids Concentration, Specific Oxygen Uptake Rate (SOUR) with an incubation of 20 °C.	\$100.00	\$110.00

Full Analytical Services Price List - Edition: 20.1.3

All packs have preparation and digest/extract charges included.

ITEM CODE	OTHER COMPOST SUITES (CONT.)	PRICE excl. GST	PRICE incl. GST
SS-PACK-142	The Compost Order 2016 Applies to composts from agricultural or source separated organics. Includes contamination with glass, metal, rigid plastics, stones, lumps of clay, light flexible film plastics. Also includes Ecoli, Faecal Coliforms and Salmonella. Note: 2 kg of sample is required to complete testing.	\$160.00	\$176.00
SS-PACK-110	Total NPK Analysis Includes Total Nitrogen, Total Phosphorus, Total Potassium.	\$60.00	\$66.00

Unless otherwise indicated 200 g of sample is required.

ITEM CODE	INDIVIDUAL COMPOST TESTS	PRICE excl. GST	PRICE incl. GST
SS-SING-090	Acid Neutralising Capacity (ANC-BT) This method is used to measure Acid Neutralising Capacity (ANC-BT) where pH-KCl > 6.5.	\$30.00	\$33.00
SS-SING-168	Ammonium (1:5 water) under AS4454 Includes moisture, extractable ammonium.	\$30.00	\$33.00
SS-SING-139	Bulk Density under AS4454/AS3743 Lab based bulk density on compost and potting mix. Note: 1 kg of sample is required to complete testing.	\$20.00	\$22.00
SS-SING-062	Carbon - Organic by Walkley Black	\$30.00	\$33.00
SS-SING-177	Carbon - Organic Matter under AS4454/AS3743/AS4419 Includes moisture correction, Total Organic Carbon (TOC), Organic Matter by calculation.	\$25.00	\$27.50
SS-SING-175	Carbon - Total (LECO) under AS4454/AS3743/AS4419 Includes moisture correction, Total Carbon (TC).	\$20.00	\$22.00
SS-SING-176	Carbon - Total Organic (LECO) under AS4454/AS3743/AS4419 Includes moisture correction, Total Organic Carbon (TOC).	\$25.00	\$27.50
SS-SING-172	Chloride (1:5 water) under AS4454/AS4419 Includes moisture, soluble chloride.	\$30.00	\$33.00
SS-SING-180	EC (1:5 water) under AS4454/AS4419 Includes moisture, EC (1:5 water).	\$24.00	\$26.40
SS-SING-170	Nitrate (1:5 water) under AS4454 Includes moisture, extractable nitrate.	\$30.00	\$33.00
SS-SING-174	Nitrogen - Total (LECO) under AS4454/AS3743/AS4419 Includes moisture correction, Total Nitrogen (TN).	\$20.00	\$22.00
SS-SING-119	Nitrogen Drawdown Index (NDI) under AS4454/AS4419 Note: 2 kg of sample is required to complete testing.	\$95.00	\$104.50
SS-SING-123	Particle Size Grading under AS4454 Includes percentage mass retained on 5 mm and 16 mm sieve. Note: 2 kg of sample is required to complete testing.	\$30.00	\$33.00
SS-SING-178	pH (1:5 water) under AS4454/AS4419 Includes moisture, pH (1:5 water).	\$24.00	\$26.40
SS-SING-165	Phosphate (1:5 water) under AS4454 Includes moisture, extractable phosphate.	\$30.00	\$33.00
SS-SING-145	Plant Growth Test (Bioassay) - TMECC 05.05-B In-vitro germination and root elongation. Note: 1 L of sample is required to complete testing.	\$50.00	\$55.00
SS-SING-189	Plant Growth Test (Bioassay) under AS4454 Used on fresh soils and composts. Seedling emergence and relative root growth. Note: 1 kg of sample is required to complete testing.	\$50.00	\$55.00
SS-SING-219	Solids Energy Code (Calorific Value)	\$140.00	\$154.00

Full Analytical Services Price List - Edition: 20.1.3

Unless otherwise indicated 200 g of sample is required.

ITEM CODE	INDIVIDUAL COMPOST TESTS (CONT.)	PRICE excl. GST	PRICE incl. GST
SS-SING-245	Vermicast Sieve Test under AS4454:2012 Includes percentage mass retained on 1.18 mm sieve. Note: 1 kg of sample is required to complete testing.	\$40.00	\$44.00
SS-SING-137	Viable Plant Propagules under AS4454/AS3743 Note: 1 kg of sample required to complete testing.	\$50.00	\$55.00
SS-SING-122	Visible Contaminants under AS4454 Applies to composts from agricultural or source separated organics. Includes contamination with glass, metal, rigid plastics, stones, lumps of clay, light flexible film plastics. Note: 2 kg of sample is required to complete testing.	\$40.00	\$44.00
SS-SING-072	Wettability under AS4454/AS3743	\$20.00	\$22.00

POTTING MIX TESTING

All packs have preparation and digest/extract charges included.

ITEM CODE	AS3743 POTTING MIX PRODUCT SUITES	PRICE excl. GST	PRICE incl. GST
CA-PACK-007	Potting Mix and Growing Media - Premium under AS3743 Includes Moisture Content, Bulk Density, pH, EC (1:1.5 water); Chloride, Sodium, Calcium, Magnesium, Potassium, Phosphate, Nitrate, Ammonium, Sulfate, Iron, Copper, Manganese, Zinc, Boron; Air-Filled Porosity (AFP); Water Holding Capacity (WHC); Wettability; Plant Growth Bioassay (Toxicity Index), Nitrogen Drawdown Index (NDI). Note: 3 kg of sample is required to complete testing.	\$300.00	\$330.00
CA-PACK-006	Potting Mix and Growing Media - Regular under AS3743 Includes Moisture Content, Bulk Density, pH, EC (1:1.5 water); Chloride, Sodium, Calcium, Magnesium, Potassium, Ammonium, Iron, Copper, Manganese, Zinc, Boron; Air-Filled Porosity (AFP), Water Holding Capacity (WHC); Wettability; Plant Growth Bioassay (Toxicity Index); Nitrogen Drawdown Index (NDI). Note: 3 kg of sample is required to complete testing.	\$275.00	\$302.50

All packs have preparation and digest/extract charges included.

ITEM CODE	AS3743 POTTING MIX BASIC SUITES	PRICE excl. GST	PRICE incl. GST
CA-PACK-021	AFP and WHC under AS3743:2003 Includes Air-Filled Porosity (AFP) and Water Holding Capacity (WHC). Note: 2 kg of sample is required to complete testing.	\$40.00	\$44.00
CA-PACK-017	Extractable Macronutrients (Ammonium Acetate) under AS3743 Includes Calcium, Magnesium, Sodium, Potassium, Phosphorus, Sulfur (1:1.5). Note: 200 g of sample is required to complete testing.	\$25.00	\$27.50
CA-PACK-018	Extractable Micronutrients (DTPA) under AS3743 Includes Iron, Copper, Zinc, Manganese (1:1.5). Note: 200 g of sample is required to complete testing.	\$25.00	\$27.50
CA-PACK-015	Nutrients - Water Extractable under AS3743 Includes Nitrate, Ammonium (1:1.5 water). Note: 200 g of sample is required to complete testing.	\$40.00	\$44.00
CA-PACK-016	pH and EC under AS3743 Includes pH and EC (1:1.5 water). Note: 200 g of sample is required to complete testing.	\$30.00	\$33.00

Unless otherwise indicated 200 g of sample is required.

ITEM CODE	INDIVIDUAL POTTING MIX TESTS	PRICE excl. GST	PRICE incl. GST
SS-SING-120	Air-filled Porosity (AFP) under AS3743 Note: 2 kg of sample is required to complete testing.	\$25.00	\$27.50
SS-SING-169	Ammonium (1:1.5 water) under AS3743 Includes extractable ammonium.	\$30.00	\$33.00
SS-SING-139	Bulk Density under AS4454/AS3743 Lab based bulk density on compost and potting mix. Note: 1 kg of sample is required to complete testing.	\$20.00	\$22.00
SS-SING-177	Carbon - Organic Matter under AS4454/AS3743/AS4419 Includes moisture correction, Total Organic Carbon (TOC), Organic Matter by calculation.	\$25.00	\$27.50
SS-SING-175	Carbon - Total (LECO) under AS4454/AS3743/AS4419 Includes moisture correction, Total Carbon (TC).	\$20.00	\$22.00
SS-SING-176	Carbon - Total Organic (LECO) under AS4454/AS3743/AS4419 Includes moisture correction, Total Organic Carbon (TOC).	\$25.00	\$27.50

Full Analytical Services Price List - Edition: 20.1.3

Unless otherwise indicated 200 g of sample is required.

ITEM CODE	INDIVIDUAL POTTING MIX TESTS (CONT.)	PRICE excl. GST	PRICE incl. GST
SS-SING-173	Chloride (1:1.5 water) under AS3743 Includes soluble chloride.	\$30.00	\$33.00
SS-SING-181	EC (1:1.5 water) under AS3743	\$14.00	\$15.40
SS-SING-171	Nitrate (1:1.5 water) under AS3743 Includes extractable nitrate.	\$30.00	\$33.00
SS-SING-174	Nitrogen - Total (LECO) under AS4454/AS3743/AS4419 Includes moisture correction, Total Nitrogen (TN).	\$20.00	\$22.00
SS-SING-188	Nitrogen Drawdown Index (NDI) under AS3743 Note: 2 kg of sample is required to complete testing.	\$95.00	\$104.50
SS-SING-179	pH (1:1.5 water) under AS3743	\$14.00	\$15.40
SS-SING-166	Phosphate (1:1.5 water) under AS3743/AS4419 Includes extractable phosphate.	\$30.00	\$33.00
SS-SING-190	Plant Growth Test (Bioassay) under AS3743/AS4419 Used on fresh soils and composts. Seedling emergence and relative root growth. Note: 1 kg of sample is required to complete testing.	\$50.00	\$55.00
SS-SING-137	Viable Plant Propagules under AS4454/AS3743 Note: 1 kg of sample required to complete testing.	\$50.00	\$55.00
SS-SING-121	Water Holding Capacity (WHC) under AS3743 Note: 2 kg of sample is required to complete testing.	\$20.00	\$22.00
SS-SING-072	Wettability under AS4454/AS3743	\$20.00	\$22.00

LANDSCAPE SOIL TESTING

All packs have preparation and digest/extract charges included.

ITEM CODE	AS4419:2018 SOIL SUITES	PRICE excl. GST	PRICE incl. GST
SS-PACK-120	Landscape Soils (On Grade) compliance under AS4419:2018 Includes Bulk Density; Texture; pH and EC; Exchangeable Cations (pH and EC dependant); Available Phosphorus; Available Nitrogen (Ammonium plus Nitrate); Organic Matter (Total Organic Carbon); Large Particles; Bioassay; Water Repellence; Physical Contaminants; Chemical Contaminants (Heavy Metals and Low Level (Pesticides, PCB)); Plant Propagules. Note: 4 kg of sample is required to complete testing.	\$500.00	\$550.00
SS-PACK-127	Landscape Soils (On Grade) monitoring under AS4419:2018 Includes Bulk Density; Texture; pH and EC; Exchangeable Cations (pH and EC dependant); Available Phosphorus; Available Nitrogen (Ammonium plus Nitrate); Organic Matter (Total Organic Carbon); Large Particles; Bioassay; Water Repellence. Note: 4 kg of sample is required to complete testing.	\$320.00	\$352.00
SS-PACK-121	Low Density Media (On Slab) compliance under AS4419:2018 Includes Bulk Density; pH and EC; Air-Filled Porosity; Water Holding Capacity; Available Phosphorus; Available Nitrogen (Ammonium), Available Nitrogen (Ammonium plus Nitrate); Organic Matter (Total Organic Carbon); Nitrogen Drawdown Index; Physical Contaminants; Chemical Contaminants (Heavy Metals and Low Level (Pesticides, PCB)); Plant Propagules. Note: 4 kg of sample is required to complete testing.	\$415.00	\$456.50
SS-PACK-128	Low Density Media (On Slab) monitoring under AS4419:2018 Includes Bulk Density; pH and EC; Air-Filled Porosity; Water Holding Capacity; Available Phosphorus; Available Nitrogen (Ammonium), Available Nitrogen (Ammonium plus Nitrate); Organic Matter (Total Organic Carbon); Nitrogen Drawdown Index. Note: 3 kg of sample is required to complete testing.	\$235.00	\$258.50
SS-PACK-122	Soils for Turf and Lawns compliance under AS4419:2018 Includes Bulk Density; Texture; pH and EC; Exchangeable Cations (pH and EC dependant); Available Phosphorus; Available Nitrogen (Ammonium plus Nitrate); Organic Matter (Total Organic Carbon); Large Particles; Dispersibility; Permeability; Water Repellence; Physical Contaminants; Chemical Contaminants (Heavy Metals and Low Level (Pesticides, PCB)); Plant Propagules. Note: 4 kg of sample is required to complete testing.	\$545.00	\$599.50
SS-PACK-129	Soils for Turf and Lawns monitoring under AS4419:2018 Includes Bulk Density; Texture; pH and EC; Exchangeable Cations (pH and EC dependant); Available Phosphorus; Available Nitrogen (Ammonium plus Nitrate); Organic Matter (Total Organic Carbon); Large Particles; Dispersibility; Permeability; Water Repellence. Note: 3 kg of sample is required to complete testing.	\$365.00	\$401.50
SS-PACK-123	Structural Support Soil and Wetlands compliance under AS4419:2018 Includes Bulk Density; Texture; pH and EC; Exchangeable Cations (pH and EC dependant); Available Phosphorus; Available Nitrogen (Nitrate); Organic Matter (Total Organic Carbon); Water Repellence; Permeability; Physical Contaminants; Chemical Contaminants (Heavy Metals and Low Level (Pesticides, PCB)); Plant Propagules. Note: 4 kg of sample is required to complete testing.	\$490.00	\$539.00
SS-PACK-130	Structural Support Soil and Wetlands monitoring under AS4419:2018 Includes Bulk Density; Texture; pH and EC; Exchangeable Cations (pH and EC dependant); Available Phosphorus; Available Nitrogen (Nitrate); Organic Matter (Total Organic Carbon); Water Repellence; Permeability. Note: 3 kg of sample is required to complete testing.	\$310.00	\$341.00

Full Analytical Services Price List - Edition: 20.1.3

All packs have preparation and digest/extract charges included.

ITEM CODE	AS4419:2003 SOIL SUITES	PRICE excl. GST	PRICE incl. GST
SS-PACK-057	Low Density/Organic Soil Test under AS4419:2003 Includes Moisture, pH, EC; Wettability; Bulk Density; Nitrogen Drawdown Index (NDI); Toxicity; Permeability; Organic Matter; Ammonium, Phosphate; Large Particles; Heavy Metals Zinc, Copper, Mercury, Lead, Nickel, Cadmium, Chromium, Selenium, Arsenic; Low Level Pesticides (Organo-chlorines (OC), Polychlorinated Biphenyls (PCB)). Note: 4 kg of sample is required to complete testing.	\$450.00	\$495.00
SS-PACK-058	Natural/Soil Blend Soil Test under AS4419:2003 Includes Moisture, pH, EC; Texture; Wettability; Bulk Density; Nitrogen Drawdown Index (NDI); Toxicity; Permeability; Dispersibility; Organic Matter; Phosphate; Large Particles; Heavy Metals Zinc, Copper, Mercury, Lead, Nickel, Cadmium, Chromium, Selenium, Arsenic; Low Level Pesticides (Organo-chlorines (OCs), Polychlorinated Biphenyls (PCBs)). Note: 4 kg of sample is required to complete testing.	\$480.00	\$528.00

All packs have preparation and digest/extract charges included.

ITEM CODE	AS4419 SOIL BASIC SUITES	PRICE excl. GST	PRICE incl. GST
SS-PACK-124	AS4419:2018 monitoring Pack Includes Texture; pH and EC; Exchangeable Cations (pH and EC dependent); Available phosphorous ; Available Nitrogen (Ammonium add Nitrate); Organic Matter (Total Carbon). Note: 200 g of sample is required to complete testing.	\$150.00	\$165.00
CA-PACK-013	LECO - Total Carbon, Total Nitrogen under AS4454/AS3743/AS4419 Includes Total Carbon (TC) and Total Nitrogen (TN), TC/TN Ratio. Note: 200 g of sample is required to complete testing.	\$25.00	\$27.50
SS-PACK-131	pH and EC under AS4419:2018 Includes pH and EC (1:5 water) except low density soils. Note: 200 g of sample is required to complete testing.	\$25.00	\$27.50
SS-PACK-146	pH and EC under AS4419:2018 Includes pH and EC (1:1.5 water) for low density soils. Note: 200 g of sample is required to complete testing.	\$25.00	\$27.50
SS-PACK-132	Total Available Nitrogen under AS4419:2018 Includes KCl extractable Nitrate and Ammonium. Note 200 g of sample is required to complete testing.	\$25.00	\$27.50

All packs have preparation and digest/extract charges included.

ITEM CODE	OTHER SOIL SUITES	PRICE excl. GST	PRICE incl. GST
SS-PACK-034	DTPA Extractable Micronutrients Includes Iron, Copper, Zinc, Manganese.	\$40.00	\$44.00
SS-PACK-027	Exchangeable Cations - 15C1 - Alcoholic 1 M NH4Cl Includes exchangeable Sodium, Potassium, Calcium, Magnesium by Alcoholic 1 M NH4Cl at pH 8.5. Ideal for soils where pH > 7.3.	\$70.00	\$77.00
SS-PACK-026	Exchangeable Cations - 15D1 - 1 M NH4OAc Includes exchangeable Sodium, Potassium, Calcium, Magnesium by 1 M NH4OAc at pH 7.0. Pretreatment for soluble salts when EC is > 0.3 dS/m.	\$50.00	\$55.00
SS-PACK-001	Exchangeable Cations - 15D3 - 1 M NH4OAc plus Acidity (15G1) Includes exchangeable Sodium, Potassium, Calcium, Magnesium by 1 M NH4OAc at pH 7.0 and exchangeable acidity (Hydrogen + Aluminium) by 1 M KCl.	\$50.00	\$55.00
SS-PACK-048	Gypsum Assessment - Soil Includes Moisture Content, Calcium, Magnesium, Sodium and Sulfur.	\$80.00	\$88.00

Full Analytical Services Price List - Edition: 20.1.3

All packs have preparation and digest/extract charges included.

ITEM CODE	OTHER SOIL SUITES (CONT.)	PRICE excl. GST	PRICE incl. GST
SS-PACK-049	Lime Assessment - Soil Includes Moisture Content, Calcium, Magnesium, Acid Neutralising Capacity (ANC-BT) and Neutralising Value.	\$90.00	\$99.00

Unless otherwise indicated 200 g of sample is required.

ITEM CODE	INDIVIDUAL SOIL TESTS	PRICE excl. GST	PRICE incl. GST
SS-SING-183	Bulk Density under AS4419 Lab based bulk density on landscape soils. Note: 1 kg of sample is required to complete testing.	\$20.00	\$22.00
SS-SING-177	Carbon - Organic Matter under AS4454/AS3743/AS4419 Includes moisture correction, Total Organic Carbon (TOC), Organic Matter by calculation.	\$25.00	\$27.50
SS-SING-175	Carbon - Total (LECO) under AS4454/AS3743/AS4419 Includes moisture correction, Total Carbon (TC).	\$20.00	\$22.00
SS-SING-176	Carbon - Total Organic (LECO) under AS4454/AS3743/AS4419 Includes moisture correction, Total Organic Carbon (TOC).	\$25.00	\$27.50
SS-SING-172	Chloride (1:5 water) under AS4454/AS4419 Includes moisture, soluble chloride.	\$30.00	\$33.00
SS-SING-167	Dispersability under AS4419	\$40.00	\$44.00
SS-SING-180	EC (1:5 water) under AS4454/AS4419 Includes moisture, EC (1:5 water).	\$24.00	\$26.40
SS-SING-229	Ethanol repellence of soil under AS4419:2018 Includes ethanol repellence of soil . Note: 200 g of sample is required to complete testing.	\$15.00	\$16.50
SS-SING-174	Nitrogen - Total (LECO) under AS4454/AS3743/AS4419 Includes moisture correction, Total Nitrogen (TN).	\$20.00	\$22.00
SS-SING-119	Nitrogen Drawdown Index (NDI) under AS4454/AS4419 Note: 2 kg of sample is required to complete testing.	\$95.00	\$104.50
SS-SING-243	Particle Size Analysis for Wetlands under AS4419:2018 Particle size of sediment and soil by hydrometer and sieve. Percentage mass retained on sieve. Includes > 2 mm, 1.0-2.0 mm, 0.5-1.0 mm, 0.25-0.5 mm, 0.1-0.25 mm, 50 µm-0.1 mm, 2-50 µm, < 2 µm fractions. Note: 500 g of sample is required to complete testing.	\$110.00	\$121.00
SS-SING-184	Particles Size Grading - Large particles under AS4419:2003 Includes percentage mass retained on 10 mm, 20 mm, 50 mm and 75 mm sieve. Note: 2 kg of sample is required to complete testing.	\$40.00	\$44.00
SS-SING-226	Particles Size Grading - Large particles under AS4419:2018 Includes percentage mass retained on 2 mm, 5 mm, 20 mm sieve. Note: 2 kg of sample is required to complete testing.	\$40.00	\$44.00
SS-SING-244	Particles Size Grading for Structural Support under AS4419:2018 Includes percentage mass passing on 63.0 mm, 53.0 mm, 37.5 mm, 26.5 mm, 19.0 mm, 13.2 mm, 4.75 mm fractions. Note: 2 kg of sample is required to complete testing.	\$60.00	\$66.00
SS-SING-156	Permeability under AS4419:2003 Note: 2 kg of sample is required to complete testing.	\$75.00	\$82.50
SS-SING-230	Permeability under AS4419:2018 This includes 8, 16 and 32 drops. Note: 1 kg of sample is required to complete testing.	\$75.00	\$82.50
SS-SING-178	pH (1:5 water) under AS4454/AS4419 Includes moisture, pH (1:5 water).	\$24.00	\$26.40

Full Analytical Services Price List - Edition: 20.1.3

Unless otherwise indicated 200 g of sample is required.

ITEM CODE	INDIVIDUAL SOIL TESTS (CONT.)	PRICE excl. GST	PRICE incl. GST
SS-SING-166	Phosphate (1:1.5 water) under AS3743/AS4419 Includes extractable phosphate.	\$30.00	\$33.00
SS-SING-033	Phosphorus - Colwell Includes Phosphorus for alkaline soils.	\$15.00	\$16.50
SS-SING-034	Phosphorus - Olsen Includes Olsen Phosphorous - a measure of the intensity of Phosphorus.	\$15.00	\$16.50
SS-SING-228	Physical Contaminants under AS4419:2018 Applies to soil types as identified by AS4419:2018. Includes contamination with glass, metal, rigid plastics, light flexible film plastics. Note: 2 kg of sample is required to complete testing.	\$40.00	\$44.00
SS-SING-190	Plant Growth Test (Bioassay) under AS3743/AS4419 Used on fresh soils and composts. Seedling emergence and relative root growth. Note: 1 kg of sample is required to complete testing.	\$50.00	\$55.00
SS-SING-164	Texture - Full (AS4419)	\$20.00	\$22.00
SS-SING-227	Top Dress - Particles under AS4419:2018 Includes percentage mass retained of organics particles on 2 mm, 5 mm, 8 mm sieve. Also mass retained of mineral particles on 2 mm sieve. Note: 2 kg of sample is required to complete testing.	\$40.00	\$44.00
SS-SING-182	Wettability under AS4419	\$20.00	\$22.00

MAIN ROAD (MRTS AND R178) TESTING

All packs have preparation and digest/extract charges included.

ITEM CODE	MRTS SOIL SUITES	PRICE excl. GST	PRICE incl. GST
SS-PACK-062	MRTS16 FORM C Topsoil Testing (2014) Includes Bulk Density; Total Nitrogen (TN), Total Carbon (TC), Total Organic Carbon (TOC), Organic Matter; Wettability; pH and EC (1:5 water); Texture; Permeability; Extractable Phosphorus, Chloride; MCP Sulfur; Large Particles; Exchangeable Calcium, Magnesium, Sodium, Potassium, Aluminium, Calcium/Magnesium Ratio Effective Cation Exchange Capacity; Dispersion (Emerson Class); Water Repellence Class; Slaking Class; Clouding (Dispersion) Class. Note: 4 kg of sample is required to complete testing.	\$300.00	\$330.00
SS-PACK-090	MRTS16 FORM C Topsoil Testing (2017) Includes Bulk Density; Total Nitrogen (TN), Total Carbon (TC), Total Organic Carbon (TOC), Organic Matter; Wettability; pH and EC (1:5 water); Texture; Permeability; Extractable Phosphorus, Chloride; MCP Sulfur; Large Particles; Exchangeable Calcium, Magnesium, Sodium, Potassium, Aluminium, Calcium/Magnesium Ratio Effective Cation Exchange Capacity; Water Repellence Class. Note: 4 kg of sample is required to complete testing.	\$300.00	\$330.00
SS-PACK-067	MRTS16 FORM D Manufactured Site Topsoil Compliance Testing (2017) Includes Total Organic Carbon (TOC), Organic Matter; pH and EC (1:5 water); Texture; Exchangeable Calcium, Magnesium, Sodium, Potassium, Aluminium, Calcium/Magnesium Ratio, Effective Cation Exchange Capacity; Dispersion (Emerson Class); Water Repellence Class. Note: 1 kg of sample is required to complete testing.	\$170.00	\$187.00
SS-PACK-063	MRTS16 FORM E Subsoil Testing (2014) Includes Wettability; pH and EC (1:5 water); Texture; Extractable Chloride; MCP Sulfur; Exchangeable Calcium, Magnesium, Sodium, Potassium, Aluminium, Calcium/Magnesium Ratio, Effective Cation Exchange Capacity; Water Repellence Class; Slaking Class; Clouding (Dispersion) Class. Note: 1 kg of sample is required to complete testing.	\$180.00	\$198.00
SS-PACK-093	MRTS16 FORM E Subsoil Testing (2017) Includes Wettability; pH and EC (1:5 water); Texture; Extractable Chloride; MCP Sulfur; Exchangeable Calcium, Magnesium, Sodium, Potassium, Aluminium, Calcium/Magnesium Ratio, Effective Cation Exchange Capacity; Dispersion (Emerson Class); Water Repellence Class; Slaking Class; Clouding (Dispersion) Class. Note: 1 kg of sample is required to complete testing.	\$200.00	\$220.00
SS-PACK-072	MRTS16 FORM F Drainage Basin Soil Testing (2014) Includes Moisture Content; pH and EC (1:5 water); Extractable Chloride; MCP Sulfur; Exchangeable Calcium, Magnesium, Sodium, Potassium, Aluminium, Calcium/Magnesium Ratio, Effective Cation Exchange Capacity; Dispersion (Emerson Class); Slaking Class; Clouding (Dispersion) Class. Note: 1 kg of sample is required to complete testing.	\$170.00	\$187.00
SS-PACK-097	MRTS16 FORM F Drainage Basin Soil Testing (2017) Includes Moisture Content; pH and EC (1:5 water); Extractable Chloride; MCP Sulfur; Dispersion (Emerson Class); Exchangeable Calcium, Magnesium, Sodium, Potassium, Aluminium, Calcium/Magnesium Ratio, Effective Cation Exchange Capacity; Dispersion (Emerson Class); Slaking Class; Clouding (Dispersion) Class. Note: 1 kg of sample is required to complete testing.	\$190.00	\$209.00
SS-PACK-086	MRTS16 FORM G Organic Soil Conditioner Testing (2014) Includes Bulk Density; Moisture, pH, EC; Wettability; TOC, TN, TC/TN Ratio; NO ₃ , NH ₄ , PO ₄ , NH ₄ /NO ₃ Ratio; Particle Size > 5mm and < 16mm; Physical Contaminants - Glass, Metal, Rigid Plastics > 2mm, Light Plastics > 5mm, Stones and Clay > 5mm; Totals (Na, K, Ca, Mg, P, S, Fe, Mn, Zn, Cu, B, Hg, Pb, Ni, Cd, Cr, Se, As); Bioassay; Plant Propagules, Nitrogen Drawdown Index, Specific Oxygen Uptake Rate, Solvita; Low Level Pesticides (Organo-chlorines, Polychlorinated Biphenyls); Salmonella, Ecoli, Faecal Coliforms; Legionella, Listeria; Asbestos. Acid Neutralising Capacity required if pH > 8.0. Note: 5 kg of sample required.	\$850.00	\$935.00

Full Analytical Services Price List - Edition: 20.1.3

All packs have preparation and digest/extract charges included.

ITEM CODE	MRTS SOIL SUITES (CONT.)	PRICE excl. GST	PRICE incl. GST
SS-PACK-100	<p>MRTS16 FORM G Organic Soil Conditioner Testing (2017)</p> <p>Includes Bulk Density; Moisture, pH, EC; Wettability; TOC, TN, TC/TN Ratio; NO₃, NH₄, PO₄, NH₄/NO₃ Ratio; Particle Size > 5mm and < 16mm; Physical Contaminants - Glass, Metal, Rigid Plastics > 2mm, Light Plastics > 5mm, Stones and Clay > 5mm; Totals (Na, K, Ca, Mg, P, S, Fe, Mn, Zn, Cu, B, Hg, Pb, Ni, Cd, Cr, Se, As); Bioassay; Plant Propagules, Nitrogen Drawdown Index, Specific Oxygen Uptake Rate, Solvita; Low Level Pesticides (Organo-chlorines, Polychlorinated Biphenyls); Salmonella, Ecoli, Faecal Coliforms; Legionella, Listeria; Asbestos; PFAS. Acid Neutralising Capacity required if pH > 8.0.</p> <p>Note: 5 kg of sample required.</p>	\$900.00	\$990.00

ITEM CODE	MRTS WATER SUITES	PRICE excl. GST	PRICE incl. GST
SW-PACK-070	<p>MRTS - FORM I - Non-potable Water Testing and Assessment Report</p> <p>Includes pH, EC; Sodium, Potassium, Calcium, Magnesium, Sulfate, Chloride, Sodium Absorption Ratio (SAR); Bicarbonate / Carbonate Alkalinity; Salmonella, Ecoli, Total Coliforms.</p>	\$150.00	\$165.00

All packs have preparation and digest/extract charges included.

ITEM CODE	R178 SOIL SUITES	PRICE excl. GST	PRICE incl. GST
SS-PACK-094	<p>R178 FORM E1 Subsoil Testing (2014)</p> <p>Includes Wettability; pH and EC (1:5 water); Texture; Extractable Chloride; MCP Sulfur; Exchangeable Calcium, Magnesium, Sodium, Potassium, Aluminium, Calcium/Magnesium Ratio, Effective Cation Exchange Capacity; Water Repellence Class; Slaking Class; Clouding (Dispersion) Class.</p> <p>Note: 1 kg of sample is required to complete testing.</p>	\$180.00	\$198.00
SS-PACK-095	<p>R178 FORM E1 Subsoil Testing (2017)</p> <p>Includes Wettability; pH and EC (1:5 water); Texture; Extractable Phosphorus, Extractable Chloride; MCP Sulfur; Exchangeable Calcium, Magnesium, Sodium, Potassium, Aluminium, Calcium/Magnesium Ratio, Effective Cation Exchange Capacity; Water Repellence Class; Slaking Class; Clouding (Dispersion) Class. Note: 1 kg of sample is required to complete testing.</p>	\$200.00	\$220.00
SS-PACK-092	<p>R178 FORM E2 Topsoil Testing - Site Won, Manufactured and Imported (2017)</p> <p>Includes Bulk Density; Total Nitrogen (TN), Total Carbon (TC), Total Organic Carbon (TOC), Organic Matter; Wettability; pH and EC (1:5 water); Texture; Permeability; Extractable Phosphorus, Chloride; MCP Sulfur; Large Particles; Exchangeable Calcium, Magnesium, Sodium, Potassium, Aluminium, Calcium/Magnesium Ratio Effective Cation Exchange Capacity; Dispersion (Emerson Class); Water Repellence Class; Slaking Class; Clouding (Dispersion) Class. Note: 4 kg of sample is required to complete testing.</p>	\$300.00	\$330.00
SS-PACK-091	<p>R178 FORM E2 Topsoil Testing (2014)</p> <p>Includes Bulk Density; Total Nitrogen (TN), Total Carbon (TC), Total Organic Carbon (TOC), Organic Matter; Wettability; pH and EC (1:5 water); Texture; Permeability; Extractable Phosphorus, Chloride; MCP Sulfur; Large Particles; Exchangeable Calcium, Magnesium, Sodium, Potassium, Aluminium, Calcium/Magnesium Ratio Effective Cation Exchange Capacity; Dispersion (Emerson Class); Water Repellence Class; Slaking Class; Clouding (Dispersion) Class. Note: 4 kg of sample is required to complete testing.</p>	\$300.00	\$330.00
SS-PACK-099	<p>R178 FORM E3 Drainage Basin Soil Testing (2017)</p> <p>Includes Moisture Content; pH and EC (1:5 water); Extractable Chloride; MCP Sulfur; Exchangeable Calcium, Magnesium, Sodium, Potassium, Aluminium, Calcium/Magnesium Ratio, Effective Cation Exchange Capacity; Dispersion (Emerson Class); Slaking Class; Clouding (Dispersion) Class. Note: 1 kg of sample is required to complete testing.</p>	\$170.00	\$187.00

Full Analytical Services Price List - Edition: 20.1.3

All packs have preparation and digest/extract charges included.

ITEM CODE	R178 SOIL SUITES (CONT.)	PRICE excl. GST	PRICE incl. GST
SS-PACK-096	R178 FORM E3 Manufactured Site Topsoil Compliance Testing (2014) Includes Total Organic Carbon (TOC), Organic Matter; pH and EC (1:5 water); Texture; Exchangeable Calcium, Magnesium, Sodium, Potassium, Aluminium, Calcium/Magnesium Ratio, Effective Cation Exchange Capacity; Dispersion (Emerson Class); Water Repellence Class. Note: 1 kg of sample is required to complete testing.	\$170.00	\$187.00
SS-PACK-098	R178 FORM E4 Water Quality Basin Soil Testing (2014) Includes Moisture Content; pH and EC (1:5 water); Extractable Chloride; MCP Sulfur; Exchangeable Calcium, Magnesium, Sodium, Potassium, Aluminium, Calcium/Magnesium Ratio, Effective Cation Exchange Capacity; Dispersion (Emerson Class); Slaking Class; Clouding (Dispersion) Class. Note: 1 kg of sample is required to complete testing.	\$170.00	\$187.00
SS-PACK-101	R178 FORM G1 Organic Soil Conditioner Testing (2017) Includes Bulk Density; Moisture, pH, EC; Wettability; TOC, TN, TC/TN Ratio; NO ₃ , NH ₄ , PO ₄ , NH ₄ /NO ₃ Ratio; Particle Size > 5mm and < 16mm; Physical Contaminants - Glass, Metal, Rigid Plastics > 2mm, Light Plastics > 5mm, Stones and Clay > 5mm; Totals (Na, K, Ca, Mg, P, S, Fe, Mn, Zn, Cu, B, Hg, Pb, Ni, Cd, Cr, Se, As); Bioassay; Plant Propagules, Nitrogen Drawdown Index, Specific Oxygen Uptake Rate, Solvita; Low Level Pesticides (Organo-chlorines, Polychlorinated Biphenyls); Salmonella, Ecoli, Faecal Coliforms; Legionella, Listeria; Asbestos. Acid Neutralising Capacity required if pH > 8.0. Note: 5 kg of sample required.	\$850.00	\$935.00

All packs have preparation and digest/extract charges included.

ITEM CODE	OTHER SOIL SUITES	PRICE excl. GST	PRICE incl. GST
SS-PACK-074	Exchangeable Cations - 15A1 - 1 M NH₄Cl Includes exchangeable Sodium, Potassium, Calcium, Magnesium by 1 M NH ₄ Cl at pH 7.0. No pre-treatment for soluble salts.	\$40.00	\$44.00
SS-PACK-078	Exchangeable Cations - 15B3 - 1 M NH₄Cl Includes exchangeable Sodium, Potassium, Calcium, Magnesium by 1 M NH ₄ Cl at pH 7.0. When EC is > 0.3 dS/m soluble Chloride is analysed to adjust the exchangeable sodium.	\$55.00	\$60.50
SS-PACK-027	Exchangeable Cations - 15C1 - Alcoholic 1 M NH₄Cl Includes exchangeable Sodium, Potassium, Calcium, Magnesium by Alcoholic 1 M NH ₄ Cl at pH 8.5. Ideal for soils where pH > 7.3.	\$70.00	\$77.00

Unless otherwise indicated 200 g of sample is required.

ITEM CODE	INDIVIDUAL SOIL TESTS	PRICE excl. GST	PRICE incl. GST
SS-SING-183	Bulk Density under AS4419 Lab based bulk density on landscape soils. Note: 1 kg of sample is required to complete testing.	\$20.00	\$22.00
SS-SING-177	Carbon - Organic Matter under AS4454/AS3743/AS4419 Includes moisture correction, Total Organic Carbon (TOC), Organic Matter by calculation.	\$25.00	\$27.50
SS-SING-172	Chloride (1:5 water) under AS4454/AS4419 Includes moisture, soluble chloride.	\$30.00	\$33.00
SS-SING-167	Dispersability under AS4419	\$40.00	\$44.00
SS-SING-025	Emerson Aggregate Test (EAT) Provides an Emerson Dispersion Class	\$40.00	\$44.00
SS-SING-184	Particles Size Grading - Large particles under AS4419:2003 Includes percentage mass retained on 10 mm, 20 mm, 50 mm and 75 mm sieve. Note: 2 kg of sample is required to complete testing.	\$40.00	\$44.00

Full Analytical Services Price List - Edition: 20.1.3

Unless otherwise indicated 200 g of sample is required.

ITEM CODE	INDIVIDUAL SOIL TESTS (CONT.)	PRICE excl. GST	PRICE incl. GST
SS-SING-226	Particles Size Grading - Large particles under AS4419:2018 Includes percentage mass retained on 2 mm, 5 mm, 20 mm sieve. Note: 2 kg of sample is required to complete testing.	\$40.00	\$44.00
SS-SING-156	Permeability under AS4419:2003 Note: 2 kg of sample is required to complete testing.	\$75.00	\$82.50
SS-SING-034	Phosphorus - Olsen Includes Olsen Phosphorous - a measure of the intensity of Phosphorus.	\$15.00	\$16.50
SS-SING-196	Slaking and Clouding - Test Methods Q161 and Q162	\$30.00	\$33.00
SS-SING-082	Sulfur - MCP	\$15.00	\$16.50
SS-SING-164	Texture - Full (AS4419)	\$20.00	\$22.00
SS-SING-197	Water repellence of soil - Test Method Q160	\$15.00	\$16.50
SS-SING-182	Wettability under AS4419	\$20.00	\$22.00

CONTAMINATION TESTING

All packs have preparation and digest/extract charges included.

ITEM CODE	CONTAMINATION SUITES	PRICE excl. GST	PRICE incl. GST
SS-PACK-055	Pesticide Screen 2a - Low Level Includes Low Level Pesticide Analysis: Organo-chlorines (OC) and Polychlorinated Biphenyls (PCB).	\$120.00	\$132.00
SS-PACK-056	Pesticide Screen 2b - Low Level Includes Low Level Pesticide Analysis: Organo-chlorines (OC), Organo-phosphates (OP), Polychlorinated Biphenyls (PCB).	\$130.00	\$143.00
SS-PACK-118	Residue Screen - Complete Includes RS1 + RS2 (OCOP Pesticides + Synthetic Pyrethroids – 80+ Residues + Herbicide and Fungicide – 40+ Residue)	\$280.00	\$308.00
SS-PACK-119	Residue Screen - Complete + Glyphosate Includes RS1 + RS2 (OCOP Pesticides + Synthetic Pyrethroids – 80+ Residues + Herbicide and Fungicide – 40+ Residue) + Glyphosate Screens.	\$380.00	\$418.00
SS-PACK-045	Total Acid Extractable - Heavy Metals (ICPMS) Includes Lead, Cadmium, Arsenic, Nickel, Aluminium, Mercury, Chromium, Silver, Selenium.	\$50.00	\$55.00

Unless otherwise indicated 200 g of sample is required.

ITEM CODE	INDIVIDUAL CONTAMINATION TESTS	PRICE excl. GST	PRICE incl. GST
SS-SING-063	Asbestos Identification (Not Quantifiable) Identification in building material, soil, compost and dust.	\$70.00	\$77.00
SS-SING-157	Glyphosate (Round Up) + AMPA Screen	\$210.00	\$231.00
SS-SING-056	Organo-chlorines (OC) - Low Level (Detection Limit - 0.01 ppm)	\$100.00	\$110.00
SS-SING-057	Organo-phosphates (OP) - Low Level (Detection Limit - 0.01 ppm)	\$100.00	\$110.00
SS-SING-224	PFAS in ASLP leachate – standard level 28 suite with detection to 0.01 µg/L Includes the analysis of per- and poly-fluoroalkyl substances (PFAS) in ASLP (Australian Standard Leachate Procedure) leachate.	\$210.00	\$231.00
SS-SING-216	PFAS in soil – standard level 28 suite with detection 0.5 µg/kg Includes the analysis of per- and poly-fluoroalkyl substances (PFAS) in soil.	\$170.00	\$187.00
SS-SING-058	Polychlorinated Biphenyls (PCB) - Low Level (Detection Limit - 0.01 ppm)	\$100.00	\$110.00
SS-SING-140	Synthetic Pyrethroids	\$120.00	\$132.00

BIOLOGICAL AND MICROBIAL TESTING

All packs have preparation and digest/extract charges included.

ITEM CODE	MICROBIAL SUITES	PRICE excl. GST	PRICE incl. GST
SS-PACK-141	Microbial Biomass Assessment - Compost Includes biomasses of 12 microbial groups relevant for compost quality, health and function.	\$299.00	\$328.90
SS-PACK-140	Microbial Biomass Assessment - Soil Includes biomasses of 12 microbial groups relevant for soil quality, health and function.	\$259.00	\$284.90
SS-PACK-059	Pathogens Includes Ecoli, Faecal Coliforms, Salmonella.	\$120.00	\$132.00

Unless otherwise indicated 200 g of sample is required.

ITEM CODE	INDIVIDUAL MICROBIAL TESTS	PRICE excl. GST	PRICE incl. GST
SS-SING-047	Aerobic Plate Count	\$40.00	\$44.00
SS-SING-044	E.Coli	\$40.00	\$44.00
SS-SING-043	Faecal Coliforms	\$40.00	\$44.00
SS-SING-046	Listeria	\$60.00	\$66.00
SS-SING-154	Phytophthora and Pythium	\$220.00	\$242.00
SS-SING-045	Salmonella	\$60.00	\$66.00
SS-SING-195	SOLVITA - Compost Emissions Maturity Test Includes measurement of carbon dioxide and ammonia gas released from compost due to biological activity.	\$60.00	\$66.00
SS-SING-209	SOLVITA - Soil CO₂ Burst Includes measurement of carbon dioxide released from soil due to biological activity.	\$60.00	\$66.00

BIOCHAR, FILTER MEDIA AND BIOSOLID TESTING

All packs have preparation and digest/extract charges included.

ITEM CODE	BIOCHAR SUITES	PRICE excl. GST	PRICE incl. GST
SS-PACK-111	Biochar Totals Analysis Includes Moisture Content, Ash Content; pH, EC (1:10 water); Total Nitrogen (TN), Total Carbon (TC), Total Organic Carbon (TOC), TC/TN Ratio, Organic Matter; Total Sodium, Potassium, Calcium, Magnesium, Phosphorus, Sulfur, Silicon, Cobalt, Molybdenum, Zinc, Manganese, Iron, Copper, Boron; Heavy Metals Silver, Arsenic, Lead, Chromium, Nickel, Cadmium, Mercury; Acid Neutralising Capacity (ANC). Note: 200 g of sample is required to complete testing.	\$200.00	\$220.00
SS-PACK-135	CEC-compulsive (true) - Cation-Exchange Capacity of soils (Sodium Acetate) Includes CEC using USEPA SW-846 test method 9081 after pre-treatment for soluble salts.	\$100.00	\$110.00
SS-PACK-136	Exchangeable Cations – 15E1 - CEC & AEC (no pre-treatment) Includes exchangeable Sodium, Potassium, Calcium, Magnesium, compulsive Cation Exchange Capacity (CEC) and Anion Exchange Capacity (AEC) with no pre-treatment for soluble salts.	\$150.00	\$165.00
SS-PACK-137	Exchangeable Cations – 15E2 - CEC & AEC (with pre-treatment) Includes exchangeable Sodium, Potassium, Calcium, Magnesium, compulsive Cation Exchange Capacity (CEC) and Anion Exchange Capacity (AEC) with pre-treatment for soluble salts.	\$160.00	\$176.00
SS-PACK-143	Soil Testing for Biochar Application Includes Moisture, pH, EC (1:5 water); Total Organic Carbon (TOC), Total Nitrogen (TN), TC/TN Ratio; Available Nitrogen (Nitrate); Soluble Chloride; Total Metals (Sb, As, Be, B, Cd, Co, Cu, Cr, Pb, Mn, Mo, Ni, Se, Sn, V, Zn, S, P, Hg); Soluble Cations (Ca, Mg, K, Na). Note: 300 g of sample is required to complete testing.	\$205.00	\$225.50

All packs have preparation and digest/extract charges included.

ITEM CODE	BIORETENTION FILTER MEDIA SUITES	PRICE excl. GST	PRICE incl. GST
SS-PACK-112	Bioretention Filter Media Analysis (FAWB 2009) Includes Moisture, pH, EC; Total Organic Carbon, Total Nitrogen, Organic Matter; Phosphate; Dry Sieving > 4.75 mm, 3.4-4.75 mm, 2.0-3.4 mm, 1-2 mm, 250 µm-1mm, 150-250 µm, 50-150 µm, < 50 µm; Hydraulic Conductivity. Note: 3 kg of sample is required to complete testing.	\$300.00	\$330.00

Unless otherwise indicated 200 g of sample is required.

ITEM CODE	INDIVIDUAL BIORETENTION FILTER MEDIA TESTS	PRICE excl. GST	PRICE incl. GST
SS-SING-220	Particle Size Analysis - Dry Sieving (FAWB 2009) Dry sieving for fractions > 4.75 mm, 3.4-4.75 mm, 2.0-3.4 mm, 1-2 mm, 250 µm-1mm, 150-250 µm, 50-150 µm, < 50 µm.	\$45.00	\$49.50
SS-SING-231	Saturated Hydraulic Conductivity under ASTM F1815 - 11 Note: 1 kg of sample is required to complete testing.	\$75.00	\$82.50

All packs have preparation and digest/extract charges included.

ITEM CODE	BIOSOLIDS SUITES	PRICE excl. GST	PRICE incl. GST
BS-PACK-001	Contaminated Grade Assessment Includes Total Dry Solids Concentration, Metals Analysis Arsenic, Cadmium, Chromium, Copper, Lead, Mercury, Nickel, Selenium, Zinc; Low Level (Organo-chlorines Pesticides (OC), Polychlorinated biphenyls (PCB)).	\$230.00	\$253.00

Full Analytical Services Price List - Edition: 20.1.3

All packs have preparation and digest/extract charges included.

ITEM CODE	BIOSOLIDS SUITES (CONT.)	PRICE excl. GST	PRICE incl. GST
BS-PACK-004	Enteric Viruses Determination Includes Reovirus, Enterovirus, Adenovirus (viruses per 4 g).	\$420.00	\$462.00
BS-PACK-006	Enteric Viruses Determination plus Helminth Ova Includes Reovirus, Enterovirus, Adenovirus (viruses per 4 g) plus Helminth Ova.	\$500.00	\$550.00
BS-PACK-002	Nutrient Determination Includes Total Nitrogen (TN), Total Kjeldahl Nitrogen (TKN) (calculation), Ammonium, Nitrate.	\$60.00	\$66.00
BS-PACK-005	SOUR Test Includes Moisture, Volatile Solids Concentration, Specific Oxygen Uptake Rate (SOUR) with an incubation of 20 °C.	\$100.00	\$110.00
BS-PACK-003	Stabilisation Confirmation Includes Moisture, Microbial Assessment (E.Coli, Faecal Coliforms, and Salmonella sp.), Volatile Solids Concentration, Specific Oxygen Uptake Rate (SOUR).	\$200.00	\$220.00

CONTAMINATION ASSESSMENT ANALYTICAL SERVICES

SOIL ASSESSMENT TESTING

All packs have preparation and digest/extract charge included.

ITEM CODE	SPECIFIC SOIL SUITES	PRICE excl. GST	PRICE incl. GST
SS-PACK-015	Aggressivity Assessment Includes Moisture, Basic Texture; pH, EC, Resistivity (calculation), Soluble Chloride, Sulfate.	\$70.00	\$77.00
SS-PACK-053	Concrete Quality Analysis Includes Chloride and Sulfate.	\$80.00	\$88.00
SS-PACK-005	Contaminated Site Assessment 1a Includes Basic Texture; Copper, Lead, Cadmium, Zinc, Arsenic, Selenium, Iron, Manganese, Silver, Chromium, Nickel, Aluminium, Mercury, Boron, Cobalt, Beryllium; Pesticides (Organo-chlorines (OC), Organo-phosphates (OP)).	\$130.00	\$143.00
SS-PACK-006	Contaminated Site Assessment 1b Includes Basic Texture; Copper, Lead, Cadmium, Zinc, Arsenic, Selenium, Iron, Manganese, Silver, Chromium, Nickel, Aluminium, Mercury, Boron, Cobalt, Beryllium; Pesticides (Organo-chlorines (OC), Organo-phosphates (OP), Polychlorinated Biphenyls (PCB)).	\$150.00	\$165.00
SS-PACK-007	Contaminated Site Assessment 2 Includes Basic Texture; Arsenic, Lead; Pesticides (Organo-chlorines (OC), Organo-phosphates (OP)).	\$100.00	\$110.00
SS-PACK-008	Contaminated Site Assessment 3 Includes Basic Texture; Copper, Lead, Cadmium, Zinc, Arsenic, Selenium, Iron, Manganese, Silver, Chromium, Nickel, Aluminium, Mercury, Boron, Cobalt, Beryllium; Pesticides (Organo-chlorines (OC)).	\$120.00	\$132.00
SS-PACK-051	Excavated Natural Material (ENM) Classification 2014 Includes pH, EC (1:5 water); Foreign Material; Copper, Lead, Cadmium, Zinc, Arsenic, Chromium, Nickel, Mercury; Polycyclic Aromatic Hydrocarbons (PAH); Total Petroleum Hydrocarbons (C10-C40), BTEX (C6-C10).	\$260.00	\$286.00
SS-PACK-042	Health Investigation Level (HIL) Soil Assessment Includes Copper, Lead, Cadmium, Zinc, Arsenic, Chromium, Nickel, Mercury, Beryllium, Boron, Cobalt; Polycyclic Aromatic Hydrocarbons (PAH), Total Petroleum Hydrocarbons (TPH), BTEX Hydrocarbons; Pesticides (Organo-chlorines (OC)); Total Phenols; Total Cyanide.	\$350.00	\$385.00
SS-PACK-023	Recovered Aggregate Exemption 2014 Includes EC; Mercury, Cadmium, Lead, Arsenic, Chromium, Copper, Nickel, Zinc; Fraction % (metal, plaster, rubber, plastic, paper, cloth, paint, wood, other vegetable matter).	\$110.00	\$121.00
SS-PACK-065	Recovered Fines Order EPA 2014 Testing Includes pH, EC (1:5 water); Foreign Material; Particle Size; Total Organic Carbon; Copper, Lead, Cadmium, Zinc, Arsenic, Chromium, Nickel, Mercury; Polycyclic Aromatic Hydrocarbons (PAH); Total Petroleum Hydrocarbons (C10-C36), BTEX (C6-C9); Pesticides (Organochlorine Pesticides (OC); Polychlorinated Biphenyls (PCB); Volatile Hydrocarbons (VHC).	\$500.00	\$550.00

Full Analytical Services Price List - Edition: 20.1.3

All packs have preparation and digest/extract charge included.

ITEM CODE	SPECIFIC SOIL SUITES (CONT.)	PRICE excl. GST	PRICE incl. GST
SS-PACK-104	<p>Resource Recovery Exemption Analysis EPA 2017</p> <p>Includes Moisture Content; pH, EC; Total Organic Carbon, Total Nitrogen, C/N Ratio; Soluble Cations (Sodium, Potassium, Calcium, Magnesium), Soluble Anions (Chloride, Nitrate); Totals (Antimony, Arsenic, Beryllium, Boron, Cadmium, Cobalt, Copper, Chromium, Lead, Manganese, Mercury, Molybdenum, Nickel, Phosphorus, Selenium, Sulfur, Tin, Vanadium, Zinc).</p>	\$270.00	\$297.00
SS-PACK-089	<p>Sand Mound Media Assessment</p> <p>Includes Dry sieving for fractions > 2 mm, 1-2 mm, 0.5-1 mm, 0.25-0.5 mm, 0.125-0.25 mm, 0.074-0.125 mm, < 0.074 mm; Hydrometer for < 2 µm fraction; Total Carbon (TC), Total Organic Carbon (TOC), Total Inorganic Carbon (TIC), Shell Content (%CaCO₃) (calculation), Organic Matter (%) (calculation); Cleanliness (Total Inorganic Carbon + Organic Matter + Clay) (calculation).</p>	\$180.00	\$198.00
SS-PACK-066	<p>The Recovered Glass Sand Order 2014</p> <p>Includes EC; Total Organic Carbon (TOC); Mercury, Cadmium, Lead, Arsenic, Chromium, Copper, Nickel, Zinc, Molybdenum; Fraction % (Plaster, clay lumps and other friable materials. Rubber, plastic, bitumen, paper, cloth, paint, wood and other vegetation matter).</p>	\$135.00	\$148.50
SS-PACK-080	<p>Treated Drilling Mud Exemption 2014</p> <p>Includes pH, EC (1:5 water); Copper, Lead, Cadmium, Zinc, Arsenic, Chromium, Nickel, Mercury; Polycyclic Aromatic Hydrocarbons (PAH); Total Petroleum Hydrocarbons (C10-C36), BTEX (C6-C9), Total Chlorinated Hydrocarbons (TCH).</p>	\$280.00	\$308.00
SS-PACK-105	<p>Treated Grease Trap Waste Order EPA 2014</p> <p>Includes Moisture Content; pH, EC; Oil and Grease; Total Nitrogen; Totals (Arsenic, Cadmium, Chromium, Copper, Lead, Mercury, Nickel, Selenium and Zinc); Available Boron.</p>	\$180.00	\$198.00

All packs have preparation and digest/extract charge included.

ITEM CODE	RESIDUE SOIL SUITES	PRICE excl. GST	PRICE incl. GST
SS-PACK-013	<p>Pesticide Screen 1a</p> <p>Includes Organo-chlorines (OC), Organo-phosphates (OP).</p>	\$80.00	\$88.00
SS-PACK-014	<p>Pesticide Screen 1b</p> <p>Includes Organo-chlorines (OC), Organo-phosphates (OP), Polychlorinated Biphenyls (PCB).</p>	\$100.00	\$110.00
SS-PACK-055	<p>Pesticide Screen 2a - Low Level</p> <p>Includes Low Level Pesticide Analysis: Organo-chlorines (OC) and Polychlorinated Biphenyls (PCB).</p>	\$120.00	\$132.00
SS-PACK-056	<p>Pesticide Screen 2b - Low Level</p> <p>Includes Low Level Pesticide Analysis: Organo-chlorines (OC), Organo-phosphates (OP), Polychlorinated Biphenyls (PCB).</p>	\$130.00	\$143.00
SS-PACK-017	<p>Petroleum Compounds Assessment 1a</p> <p>Includes Total Petroleum Hydrocarbons (TPHC10-C40), BTEX (equivalent to TPHC6- C10).</p>	\$90.00	\$99.00
SS-PACK-018	<p>Petroleum Compounds Assessment 1b (Total and Speciated)</p> <p>Includes Total Petroleum Hydrocarbons (TPHC10-C40), BTEX (equivalent to TPHC6- C10), Speciated Total Petroleum Hydrocarbons (aromatic and aliphatic).</p>	\$280.00	\$308.00

Full Analytical Services Price List - Edition: 20.1.3

All packs have preparation and digest/extract charge included.

ITEM CODE	RESIDUE SOIL SUITES (CONT.)	PRICE excl. GST	PRICE incl. GST
SS-PACK-118	Residue Screen - Complete Includes RS1 + RS2 (OCOP Pesticides + Synthetic Pyrethroids – 80+ Residues + Herbicide and Fungicide – 40+ Residue)	\$280.00	\$308.00
SS-PACK-119	Residue Screen - Complete + Glyphosate Includes RS1 + RS2 (OCOP Pesticides + Synthetic Pyrethroids – 80+ Residues + Herbicide and Fungicide – 40+ Residue) + Glyphosate Screens.	\$380.00	\$418.00

All packs have preparation and digest/extract charge included.

ITEM CODE	METAL SOIL SUITES	PRICE excl. GST	PRICE incl. GST
SS-PACK-004	Metals Basic Scan - Total Acid Extractable Includes Aluminium, Arsenic, Beryllium, Boron, Cadmium, Chromium, Cobalt, Copper, Iron, Lead, Manganese, Mercury, Nickel, Selenium, Silver and Zinc.	\$70.00	\$77.00
SS-PACK-043	Metals Extra Scan - Total Acid Extractable Includes Antimony, Barium, Bismuth, Lithium, Molybdenum, Silicon, Strontium, Thallium, Thorium, Uranium and Vanadium.	\$70.00	\$77.00
SS-PACK-045	Metals Heavy Scan - Total Acid Extractable Includes Lead, Cadmium, Arsenic, Nickel, Aluminium, Mercury, Chromium, Silver, Selenium.	\$50.00	\$55.00
SS-PACK-032	Metals Specific - TCLP Extractable Includes Copper, Lead, Cadmium, Zinc, Arsenic, Selenium, Iron, Manganese, Silver, Chromium, Nickel, Aluminium, Mercury.	\$90.00	\$99.00
SS-PACK-071	Speciated Antimony Includes toxic antimony species SbIII determination using HPLC-ICPMS (Total Antimony analysis also included to determine SbV).	\$400.00	\$440.00
SS-PACK-069	Speciated Arsenic Includes toxic arsenic species AsV determination using HPLC-ICPMS (Total Arsenic analysis also included to determine As III).	\$400.00	\$440.00
SS-PACK-070	Speciated Chromium Includes toxic hexavalent chromium species CrVI determination using HPLC-ICPMS (Total Chromium analysis also included to determine CrIII).	\$400.00	\$440.00
SS-PACK-068	Speciated Mercury Includes toxic mercury species Methyl Mercury determination using HPLC-ICPMS (Total Mercury analysis also included to determine HgII).	\$400.00	\$440.00

ITEM CODE	SOIL PREPARATIONS	PRICE excl. GST	PRICE incl. GST
SS-PREP-002	Hotblock Digest Includes total Aqua-Regia or Nitric Acid digestion of solid samples.	\$10.00	\$11.00
SS-PREP-001	Sample Preparation Includes drying and ring mill grinding.	\$10.00	\$11.00
SS-PREP-005	TCLP Extractions Toxicity Characteristic Leaching Procedure.	\$45.00	\$49.50

Contamination Assessment Price List - Edition: 20.1.3

Sample Preparation may be required unless a Discounted Testing Suite is selected.

ITEM CODE	INDIVIDUAL SOIL TESTS	PRICE excl. GST	PRICE incl. GST
SS-SING-149	Arsenic - Total Includes sample preparation/acid digest and analysis by ICPMS.	\$30.00	\$33.00
SS-SING-063	Asbestos Identification (Not Quantifiable) Identification in building material, soil, compost and dust.	\$70.00	\$77.00
SS-SING-161	Asbestos Identification and Quantification in Soil Identification and quantification in soil (using AS4964-2004 or WA/NEPM) (% ACM, % Friable).	\$80.00	\$88.00
SS-SING-162	Chromium VI - Hexavalent Speciation by a screening colourimetric technique which may be subject to matrix interference. Refer to separate analysis codes for speciation using HPLC-ICPMS analysis.	\$36.00	\$39.60
SS-SING-127	Contamination Foreign Material Fraction Percentage Includes Fraction % (metal, plaster, rubber, plastic, paper, cloth, paint, wood, other vegetable matter).	\$30.00	\$33.00
SS-SING-153	Cyanide - Free	\$45.00	\$49.50
SS-SING-148	Cyanide - Total	\$60.00	\$66.00
SS-SING-147	Fluoride - Total by fusion	\$70.00	\$77.00
SS-SING-132	General Metals - ICPMS Price per element Aluminium, Antimony, Arsenic, Barium, Beryllium, Bismuth, Boron, Cadmium, Calcium, Chromium, Cobalt, Copper, Iron, Lead, Lithium, Magnesium, Manganese, Mercury, Molybdenum, Nickel, Phosphorus, Potassium, Selenium, Silicon, Silver, Sodium, Strontium, Sulfur, Thallium, Thorium, Uranium, Vanadium or Zinc.	\$10.00	\$11.00
SS-SING-157	Glyphosate (Round Up) + AMPA Screen	\$210.00	\$231.00
SS-SING-158	Herbicides Phenoxy Acid	\$200.00	\$220.00
SS-SING-051	Hydrocarbons - BTEX - equivalent to TPH(C6-C10)	\$50.00	\$55.00
SS-SING-020	Hydrocarbons - Polycyclic Aromatic (PAH)	\$65.00	\$71.50
SS-SING-192	Hydrocarbons - Polycyclic Aromatic (PAH) by TCLP Includes PAH by TCLP extraction.	\$115.00	\$126.50
SS-SING-115	Hydrocarbons - Stable Isotopes Includes Hydrocarbons (C1-C5). Cost per analyte.	\$40.00	\$44.00
SS-SING-023	Hydrocarbons - Total Petroleum - Speciated Includes Speciated TPH (aromatic or aliphatic).	\$200.00	\$220.00
SS-SING-052	Hydrocarbons - Total Petroleum - TPH (C10-C40)	\$50.00	\$55.00
SS-SING-150	Lead - Total Includes sample preparation, acid digest and analysis by ICPMS.	\$30.00	\$33.00

Contamination Assessment Price List - Edition: 20.1.3

Sample Preparation may be required unless a Discounted Testing Suite is selected.

ITEM CODE	INDIVIDUAL SOIL TESTS (CONT.)	PRICE excl. GST	PRICE incl. GST
SS-SING-024	Metals Specific - TCLP Extractable Price per element Aluminium, Arsenic, Cadmium, Chromium, Copper, Iron, Lead, Manganese, Mercury, Nickel, Silver or Zinc.	\$15.00	\$16.50
SS-SING-133	Non-Standard Metals - ICPMS Price per element Cerium, Dysprosium, Erbium, Europium, Gadolinium, Gallium, Gold, Holmium, Lanthanum, Lutetium, Neodymium, Praseodymium, Rubidium, Samarium, Scandium, Terbium, Thulium, Tin, Titanium, Tungsten, Ytterbium or Yttrium.	\$15.00	\$16.50
SS-SING-053	Organo-chlorines (OC) (Detection Limit - 0.1 ppm)	\$65.00	\$71.50
SS-SING-056	Organo-chlorines (OC) - Low Level (Detection Limit - 0.01 ppm)	\$100.00	\$110.00
SS-SING-054	Organo-phosphates (OP) (Detection Limit - 0.1 ppm)	\$65.00	\$71.50
SS-SING-057	Organo-phosphates (OP) - Low Level (Detection Limit - 0.01 ppm)	\$100.00	\$110.00
SS-SING-159	Organotins (MBT, TBT, DBT)	\$260.00	\$286.00
SS-SING-070	Paint Analysis for Lead	\$30.00	\$33.00
SS-SING-224	PFAS in ASLP leachate – standard level 28 suite with detection to 0.01 µg/L Includes the analysis of per- and poly-fluoroalkyl substances (PFAS) in ASLP (Australian Standard Leachate Procedure) leachate.	\$210.00	\$231.00
SS-SING-216	PFAS in soil – standard level 28 suite with detection 0.5 µg/kg Includes the analysis of per- and poly-fluoroalkyl substances (PFAS) in soil.	\$170.00	\$187.00
SS-SING-065	pH (1:5 water)	\$12.50	\$13.75
SS-SING-142	Phenol - Total	\$60.00	\$66.00
SS-SING-029	Phenolics - speciated phenols	\$90.00	\$99.00
SS-SING-055	Polychlorinated Biphenyls (PCB) (Detection Limit - 0.1 ppm)	\$65.00	\$71.50
SS-SING-058	Polychlorinated Biphenyls (PCB) - Low Level (Detection Limit - 0.01 ppm)	\$100.00	\$110.00
SS-SING-217	Semi-Volatile Organic Compounds (SVOC) SVOC includes Phenols.	\$260.00	\$286.00
SS-SING-027	Silica - Total Includes specialised NaOH high temperature fusion extraction of silicon.	\$120.00	\$132.00
SS-SING-223	Silica Gel Clean-up TRH Includes TRH C9-C40 Natural/ Petroleum differentiation – silica gel cleanup (removes all of the biogenic, more polar material leaving just the petrogenic based TRH).	\$110.00	\$121.00
SS-SING-140	Synthetic Pyrethroids	\$120.00	\$132.00
SS-SING-126	Volatile Halogenated Compounds (VHC)	\$80.00	\$88.00
SS-SING-026	Volatile Organic Compounds (VOC)	\$115.00	\$126.50

WATER ASSESSMENT TESTING

All packs have preparation and digest/extract charge included.

ITEM CODE	SPECIFIC WATER SUITES	PRICE excl. GST	PRICE incl. GST
SW-PACK-018	Effluent Monitoring Includes pH, Total Suspended Solids (TSS); Biochemical Oxygen Demand (BOD); Total Oils and Grease (TOG); Total Nitrogen (TN), Total Phosphorus (TP); Nitrate, Nitrite, Phosphate, Ammonium; Faecal Coliforms.	\$170.00	\$187.00
SW-PACK-058	Gas Contamination Monitoring for Dissolved Gases Includes Acetylene, Butane, Ethane, Ethene, Methane and Propane.	\$140.00	\$154.00
SW-PACK-056	Gas Contamination Water Quality Monitoring Includes pH, EC, Total Dissolved Salts (TDS) (calculation), Total Alkalinity, Total Suspended Solids (TSS); Total Petroleum Hydrocarbons (TPH C10-C40), BTEX (Equivalent TPH C6-C10); Aluminium, Arsenic, Cadmium, Chromium, Copper, Iron, Lead, Manganese, Mercury, Nickel, Selenium, Silver and Zinc.	\$160.00	\$176.00
SW-PACK-015	Wastewater Monitoring Includes pH, Total Suspended Solids (TSS); Biochemical Oxygen Demand (BOD); Total Oils and Grease (TOG).	\$85.00	\$93.50
SW-PACK-071	Water quality for concrete mixes under AS1379 Includes pH, EC, TDS (by calc), Total Suspended Solids, Total Oils and Grease, Sugars (Biological Oxygen Demand), Chloride, Sodium and Sulfate.	\$140.00	\$154.00

All packs have preparation and digest/extract charge included.

ITEM CODE	RESIDUE WATER SUITES	PRICE excl. GST	PRICE incl. GST
SW-PACK-072	Complete Waters Residue Screen Includes RS1 + RS2 (OCOP Pesticides + Synthetic Pyrethroids – 80+ Residues + Herbicide and Fungicide – 40+ Residue).	\$280.00	\$308.00
SW-PACK-009	Pesticide Screen 1a Includes Organo-chlorines (OC), Organo-phosphates (OP).	\$70.00	\$77.00
SW-PACK-010	Pesticide Screen 1b Includes Organo-chlorines (OC), Organo-phosphates (OP) and Polychlorinated biphenyls (PCB).	\$90.00	\$99.00
SW-PACK-024	Pesticide Screen 2a - Low Level Includes Low Level Pesticide Analysis: Organo-chlorines (OC) and Organo-phosphates (OP).	\$170.00	\$187.00
SW-PACK-027	Pesticide Screen 2b - Low Level Includes Low Level Pesticide Analysis: Organo-chlorines (OC), Organo-phosphates (OP), Polychlorinated Biphenyls (PCB).	\$180.00	\$198.00
SW-PACK-059	Pesticide Screen 3 - In Oil Includes Organo-chlorines (OC), Organo-phosphates (OP). Note: 25 mL required.	\$150.00	\$165.00

Full Analytical Services Price List - Edition: 20.1.3

All packs have preparation and digest/extract charge included.

ITEM CODE	METAL WATER SUITES	PRICE excl. GST	PRICE incl. GST
SW-PACK-030	Basic Metals Scan - Total Recoverable (digested with nitric acid) (ICPMS) Includes Aluminium, Arsenic, Cadmium, Chromium, Copper, Iron, Lead, Manganese, Mercury, Nickel, Selenium, Silver and Zinc.	\$65.00	\$71.50
SW-PACK-029	Metals Basic Scan - Total Available/Acid Soluble (acidified) Includes Aluminium, Arsenic, Cadmium, Chromium, Copper, Iron, Lead, Manganese, Mercury, Nickel, Selenium, Silver and Zinc.	\$60.00	\$66.00
SW-PACK-045	Metals Extra Scan - Total Available/Acid Soluble (acidified) Includes Antimony, Barium, Beryllium, Bismuth, Boron, Bromide, Cobalt, Lithium, Molybdenum, Silicon, Strontium, Thallium, Thorium, Uranium and Vanadium.	\$60.00	\$66.00
SW-PACK-060	Saline Water Metals (Low Level) > 20 mS/cm (As Supplied) (ICPMS) Includes Basic (Aluminium, Arsenic, Cadmium, Chromium, Copper, Iron, Lead, Manganese, Mercury, Nickel, Selenium, Silver and Zinc); Extra (Barium, Beryllium, Bismuth, Cobalt, Molybdenum, Thallium, Uranium and Vanadium).	\$80.00	\$88.00
SW-PACK-051	Special - Metals and Salts Combo - As Supplied (ICPMS) Includes Basic (Aluminium, Arsenic, Cadmium, Chromium, Copper, Iron, Lead, Manganese, Mercury, Nickel, Selenium, Silver and Zinc); Extra (Antimony, Barium, Beryllium, Bismuth, Boron, Bromide, Cobalt, Lithium, Molybdenum, Silicon, Strontium, Thallium, Thorium, Uranium and Vanadium) and Salts (Calcium, Chloride, Magnesium, Potassium, Sodium and Sulfur).	\$110.00	\$121.00
SW-PACK-069	Speciated Antimony Includes toxic antimony species SbIII determination using HPLC-ICPMS (Total Antimony analysis also included to determine SbV) 1% of volume HCl preservation in PP (preservation to be confirmed).	\$350.00	\$385.00
SW-PACK-067	Speciated Arsenic Includes toxic arsenic species AsV determination using HPLC-ICPMS (Total Arsenic analysis also included to determine As III) 1% of volume HCl preservation in PP.	\$350.00	\$385.00
SW-PACK-068	Speciated Chromium Includes toxic hexavalent chromium species CrVI determination using HPLC-ICPMS (Total Chromium analysis also included to determine CrIII) 1 M NaOH preservation (approximately 3 drops/30 mL to adjust pH to 8-9.5) in PP.	\$350.00	\$385.00
SW-PACK-066	Speciated Mercury Includes toxic mercury species Methyl Mercury determination using HPLC-ICPMS (Total Mercury analysis also included to determine HgII) 1% of volume HCl preservation in glass jar.	\$350.00	\$385.00

ITEM CODE	WATER PREPARATIONS	PRICE excl. GST	PRICE incl. GST
SW-PREP-003	Filtered/Dissolved Metals Immediate filtration through 0.45 µm filter followed by acidification with Nitric acid. It is particularly important where waters are high in suspended clay matter, where Iron and Aluminium may be present.	\$5.00	\$5.50
SW-PREP-006	Saline Waters Instrument Setup (per batch)	\$100.00	\$110.00

Full Analytical Services Price List - Edition: 20.1.3

ITEM CODE	WATER PREPARATION (CONT.)	PRICE excl. GST	PRICE incl. GST
SW-PREP-002	Total Available/Acid Soluble Metals Acidification with Nitric acid. Used on nearly all environmental waters, acid sulfate waters, groundwater and surfacewaters (According to ANZECC guidelines). Also used for clean waters, drinking waters, when acidified in the field and when requested.	\$5.00	\$5.50
SW-PREP-001	Total Recoverable Metals Nitric Acid digest. Used on high sludge/solid waters, liquid fertilisers and when requested.	\$15.00	\$16.50

Sample Preparation may be required unless a Discounted Testing Suite is selected.

ITEM CODE	INDIVIDUAL WATER TESTS	PRICE excl. GST	PRICE incl. GST
SW-SING-012	Biochemical Oxygen Demand (BOD) - Total	\$45.00	\$49.50
SW-SING-013	Chemical Oxygen Demand (COD)	\$45.00	\$49.50
SW-SING-030	Chromium VI - Hexavalent Speciation by a screening colourimetric technique which may be subject to matrix interference. Refer to separate analysis codes for speciation using HPLC-ICPMS analysis.	\$36.00	\$39.60
SW-SING-056	Conductivity - Electrical	\$10.00	\$11.00
SW-SING-029	Cyanide - Total	\$50.00	\$55.00
SW-SING-104	General Metals - Total Available/Acid Soluble Price per element Al, Sb, As, Ba, Be, Bi, B, Br, Cd, Ca, Cr, Co, Cu, Fe, Pb, Li, Mg, Mn, Hg, Mo, Ni, P, K, Se, Si, Ag, Na, Sr, S, Tl, Th, U, V, Zn.	\$10.00	\$11.00
SW-SING-116	Glyphosate (Round Up)	\$170.00	\$187.00
SW-SING-098	Herbicides Phenoxy Acid	\$170.00	\$187.00
SW-SING-062	Hydrocarbons - BTEX (Equivalent to TPH C6-C10)	\$50.00	\$55.00
SW-SING-008	Hydrocarbons - Polycyclic Aromatic Hydrocarbons (PAH)	\$65.00	\$71.50
SW-SING-063	Hydrocarbons - Total Petroleum (TPH C10-C40)	\$50.00	\$55.00
SW-SING-112	Methane	\$110.00	\$121.00
SW-SING-108	Non-Standard Metals - Total Available/Acid Soluble Price per element Cerium, Dysprosium, Erbium, Europium, Gadolinium, Gallium, Gold, Holmium, Lanthanum, Lutetium, Neodymium, Praseodymium, Rubidium, Samarium, Scandium, Terbium, Thulium, Tin, Titanium, Tungsten, Ytterbium or Yttrium.	\$15.00	\$16.50
SW-SING-064	Organo-chlorines (OC)	\$65.00	\$71.50
SW-SING-113	Organo-chlorines (OC) - In Oil Note: 25 mL required.	\$120.00	\$132.00
SW-SING-096	Organo-chlorines (OC) - Low Level	\$160.00	\$176.00
SW-SING-065	Organo-phosphates (OP)	\$65.00	\$71.50

Full Analytical Services Price List - Edition: 20.1.3

Sample Preparation may be required unless a Discounted Testing Suite is selected.

ITEM CODE	INDIVIDUAL WATER TESTS (CONT.)	PRICE excl. GST	PRICE incl. GST
SW-SING-114	Organo-phosphates (OP) - In Oil Note: 25 mL required.	\$120.00	\$132.00
SW-SING-097	Organo-phosphates (OP) - Low Level	\$160.00	\$176.00
SW-SING-117	Organotins (MBT, TBT, DBT)	\$260.00	\$286.00
SW-SING-058	Oxygen - Dissolved (DO)	\$10.00	\$11.00
SW-SING-121	PFAS in water – standard level 28 suite with detection 0.01-0.05 µg/L Includes the analysis of per- and poly-fluoroalkyl substances (PFAS) in water.	\$170.00	\$187.00
SW-SING-055	pH	\$10.00	\$11.00
SW-SING-038	Phenol - Total	\$60.00	\$66.00
SW-SING-026	Phenolics - Speciated Phenols	\$90.00	\$99.00
SW-SING-066	Polychlorinated Biphenyls (PCB)	\$65.00	\$71.50
SW-SING-099	Polychlorinated Biphenyls (PCB) - Low Level	\$160.00	\$176.00
SW-SING-057	Salinity	\$10.00	\$11.00
SW-SING-111	Semi-Volatile Organic Compounds (SVOC) SVOC includes Phenols.	\$260.00	\$286.00
SW-SING-122	Silica - Total Includes specialised NaOH high temperature fusion extraction of silicon as per dry weight.	\$150.00	\$165.00
SW-SING-011	Total Oils and Grease (TOG) - Hexane extractable	\$50.00	\$55.00
SW-SING-003	Total Suspended Solids (TSS)	\$20.00	\$22.00
SW-SING-037	Trihalomethanes (THM)	\$60.00	\$66.00
SW-SING-095	Volatile Halogenated Compounds (VHC)	\$90.00	\$99.00
SW-SING-094	Volatile Organic Compounds (VOC) VOC includes BTEX.	\$115.00	\$126.50

PHYSICAL PARAMETERS ANALYTICAL SERVICES

PHYSICAL PARAMETER TESTING

All suites have the preparation charge included.

ITEM CODE	PHYSICAL PARAMETER SUITES	PRICE excl. GST	PRICE incl. GST
SS-PACK-138	Atterberg Limits Includes Liquid Limit, Plastic Limit, Plastic Index and Shrinkage Limit.	\$150.00	\$165.00
SS-PACK-125	RUSLE Soil Erodibility Factor Includes texture grading through ISSS Hydrometer and 0.1, 0.2 and 2.0 mm Sieve analysis, Organic Matter by calculation from LECO Total Organic Carbon, Emerson Dispersion Class using the Emerson Aggregate Test and determination of K Factor. Client must provide field assessment of Soil Structure and Permeability using RUSLE classes for K Factor calculation.	\$185.00	\$203.50

Individual tests may require sample preparation.

ITEM CODE	PARTICLE SIZE TESTS	PRICE excl. GST	PRICE incl. GST
SS-SING-194	Gravel Content Includes sieving > 2 mm stones and organic matter.	\$10.00	\$11.00
SS-SING-237	Laser Diffraction – Methylated Spirits Includes top cut sieving as required and dispersion in methylated spirits. Particle size distribution from 0.01 to 3000 µm. Size classes dictated by clients requirements. Price dependent upon application and sample amounts.	\$120.00	\$132.00
SS-SING-011	Particle Size Analysis - Dry Sieving Dry sieving for fractions > 2 mm, 1-2 mm, 500 µm-1 mm, 250-500 µm, 125-250 µm, 63-125 µm, < 63 µm.	\$35.00	\$38.50
FA-PACK-012	Particle Size Analysis – Dry Sieving – Coarse Fertiliser Dry sieving Particle Size Analysis including > 1 mm, 0.85-1 mm, 0.3-0.85 mm, < 0.3 mm fractions.	\$50.00	\$55.00
SS-SING-220	Particle Size Analysis - Dry Sieving (FAWB 2009) Dry sieving for fractions > 4.75 mm, 3.4-4.75 mm, 2.0-3.4 mm, 1-2 mm, 250 µm-1 mm, 150-250 µm, 50-150 µm, < 50 µm.	\$45.00	\$49.50
SS-SING-236	Particle Size Analysis – ISSS and USDA Hydrometer Particle size of sediment and soil by hydrometer. Includes > 2 mm, > 50 µm, > 20 µm, 50 µm-2 mm, 2-50 µm, 2-20 µm and < 2 µm fractions.	\$75.00	\$82.50
SS-SING-012	Particle Size Analysis - ISSS Hydrometer Particle size of sediment and soil by hydrometer. Includes > 2 mm, > 20 µm, 20-2 mm, 2-20 µm and < 2 µm fractions.	\$60.00	\$66.00
SS-PACK-126	Particle Size Analysis – ISSS Hydrometer plus 0.2 and 2.0 mm Sieving Includes particle sizing of soils and sediments for ISSS classification: < 2 µm, 2-20 µm and 20 µm-2 mm by hydrometer; 0.2-2.0 mm and > 2 mm by sieving.	\$80.00	\$88.00

Full Analytical Services Price List - Edition: 20.1.3

Individual tests may require sample preparation.

ITEM CODE	PARTICLE SIZE TESTS (CONT.)	PRICE excl. GST	PRICE incl. GST
SS-SING-146	<p>Particle Size Analysis - Laser Diffraction</p> <p>Particle size analysis using a Malvern Mastersizer 3000 or 2000. Span dependent on instrument choice 0.01 to 3000 µm or 0.01 to 2000 µm. Size classes dictated by client requirements. Includes organic and acid digestion of organic matter and shell, as required.</p> <p>Price dependent upon application and sample amounts.</p>	\$100.00	\$110.00
FA-PACK-013	<p>Particle Size Analysis – Laser Diffraction – Fine Fertiliser</p> <p>Laser Diffraction Particle Size Analysis including 2000 to 0.01 µm. Size fractions include < 0.01 mm, 0.01-0.02 mm, 0.02-0.03 mm, 0.03-0.04 mm, 0.04-0.05 mm, 0.05-0.06 mm, 0.06-0.07 mm, 0.07-0.08 mm, 0.08-0.09 mm, 0.09-0.1 mm, 0.1-0.125 mm, 0.125-0.25 mm, 0.25-0.5 mm, 0.5-1.0 mm, > 1.0 mm fractions.</p> <p>Price dependent upon application and sample amounts.</p>	\$120.00	\$132.00
SS-SING-235	<p>Particle Size Analysis – USDA Hydrometer</p> <p>Particle size of sediment and soil by hydrometer. Includes > 2 mm, > 50 µm, 50 µm-2 mm, 2-50 µm and < 2 µm fractions.</p>	\$70.00	\$77.00
SS-SING-198	<p>Particle Size Analysis - Wet Sieving</p> <p>Wet sieving for fractions > 2 mm, 1-2 mm, 500 µm-1 mm, 250-500 µm, 125-250 µm, 63-125 µm, < 63 µm.</p>	\$60.00	\$66.00
SS-SING-243	<p>Particle Size Analysis for Wetlands under AS4419:2018</p> <p>Particle size of sediment and soil by hydrometer and sieve. Percentage mass retained on sieve. Includes > 2 mm, 1.0-2.0 mm, 0.5-1.0 mm, 0.25-0.5 mm, 0.1-0.25 mm, 50 µm-0.1 mm, 2-50 µm, < 2 µm fractions. Note: 500 g of sample is required to complete testing.</p>	\$110.00	\$121.00
SS-SING-123	<p>Particle Size Grading under AS4454</p> <p>Includes percentage mass retained on 5 mm and 16 mm sieve. Note: 2 kg of sample is required to complete testing.</p>	\$30.00	\$33.00
SS-SING-184	<p>Particles Size Grading - Large particles under AS4419</p> <p>Includes percentage mass retained on 10 mm, 20 mm, 50 mm and 75 mm sieve. Note: 2 kg of sample is required to complete testing.</p>	\$40.00	\$44.00
SS-SING-226	<p>Particles Size Grading - Large particles under AS4419:2018</p> <p>Includes percentage mass retained on 2 mm, 5 mm, 8 mm, 20 mm sieve. Note: 2 kg of sample is required to complete testing.</p>	\$40.00	\$44.00
SS-SING-244	<p>Particles Size Grading for Structural Support under AS4419:2018</p> <p>Includes percentage mass passing on 63.0 mm, 53.0 mm, 37.5 mm, 26.5 mm, 19.0 mm, 13.2 mm, 4.75 mm fractions. Note: 2 kg of sample is required to complete testing.</p>	\$60.00	\$66.00
SS-SING-227	<p>Top Dress - Particles under AS4419:2018</p> <p>Includes percentage mass retained of organics particles on 2 mm, 5 mm, 8 mm sieve. Also mass retained of mineral particles on 2 mm sieve. Note: 2 kg of sample is required to complete testing.</p>	\$40.00	\$44.00

Individual tests may require sample preparation.

ITEM CODE	DISPERSION AND AGGREGATION TESTS	PRICE excl. GST	PRICE incl. GST
SS-SING-167	<p>Dispersability under AS4419</p>	\$40.00	\$44.00
SS-SING-215	<p>Dispersion Percent</p> <p>Includes Dispersion Percent and ISSS Hydrometer particle size analysis.</p>	\$90.00	\$99.00

ITEM CODE	DISPERSION AND AGGREGATION TESTS (CONT.)	PRICE excl. GST	PRICE incl. GST
SS-SING-205	Emerson Aggregate Stability Test for Wastewater This modified Emerson aggregate test (MEAT alternative) is the best option for assessment of aggregate stability for land application areas. Unlike MEAT results, the classes determined by this test can be directly related to those of the Emerson Aggregate Test.	\$40.00	\$44.00
SS-SING-025	Emerson Aggregate Test (EAT) Provides an Emerson Dispersion Class	\$40.00	\$44.00
SS-SING-085	Emerson Dispersion Index (Loveday and Pyle, 1973)	\$20.00	\$22.00
SS-SING-015	Modified Emerson Aggregate Test (MEAT)	\$40.00	\$44.00
SS-SING-206	R1 and R2 Dispersion Ratio	\$100.00	\$110.00
SS-SING-196	Slaking and Clouding - Test Methods Q161 and Q162	\$30.00	\$33.00

Individual tests may require sample preparation.

ITEM CODE	WATER HOLDING AND PERMEABILITY TESTS	PRICE excl. GST	PRICE incl. GST
CA-PACK-021	AFP and WHC under AS3743:2003 Includes Air-Filled Porosity (AFP) and Water Holding Capacity (WHC). Note: 2 kg of sample is required to complete testing.	\$40.00	\$44.00
SS-SING-120	Air-filled Porosity (AFP) under AS3743 Note: 2 kg of sample is required to complete testing.	\$25.00	\$27.50
SS-SING-229	Ethanol repellence of soil under AS4419:2018 Includes ethanol repellence of soil . Note: 200 g of sample is required to complete testing.	\$15.00	\$16.50
SS-SING-156	Permeability under AS4419:2003 Note: 2 kg of sample is required to complete testing.	\$75.00	\$82.50
SS-SING-230	Permeability under AS4419:2018 This includes 8, 16 and 32 drops. Note: 1 kg of sample is required to complete testing.	\$75.00	\$82.50
SS-SING-231	Saturated Hydraulic Conductivity under ASTM F1815 - 11 Note: 1 kg of sample is required to complete testing.	\$75.00	\$82.50
SS-SING-247	Soil water content at Field Capacity and Permanent Wilting Point Includes soil water content at 33 kPa (Field Capacity) and 1500 kPa (Permanent Wilting Point). This test can only be selected with either SS-SING-207 and SS-SING-210.	\$50.00	\$55.00
SS-SING-013	Soil Water Retention Curve - Estimation by modelling using surrogate methods Includes an estimate of Soil Moisture Curve parameters and soil hydraulic properties including field capacity and permanent wilting point, and saturated hydraulic conductivity. Requires field soil bulk density as a preference to lab bulk density or target bulk density. The method uses USDA hydrometer particle size analysis and pedotransfer software.	\$110.00	\$121.00

ITEM CODE	WATER HOLDING AND PERMEABILITY TESTS (CONT.)	PRICE excl. GST	PRICE incl. GST
SS-SING-207	<p>Soil Water Retention Curve - in-situ soil cores - Ceramic Plate & Dewpoint Potentiometer</p> <p>Includes data for three points on the Soil Water Retention Curve: wet-end soil water content at 1 kPa and 10 kPa (Field Capacity) and dry-end soil water content at Air-Dryness (100 MPa). A ceramic plate and hanging water column is used for the wet end, while the dry end is measured using a dew point potentiometer (Decagon WP4-T). Soil water content at 33 kPa (Field Capacity) and 1500 kPa (Permanent Wilting Point) can be included with selection of SS-SING-247</p> <p>Note: In-situ soil cores of 30-50 mm height are required.</p>	\$225.00	\$247.50
SS-SING-210	<p>Soil Water Retention Curve - loose soil/target bulk density - Ceramic Plate & Dewpoint Potentiometer</p> <p>Includes data for three points on the Soil Water Retention Curve: wet-end soil water content at 1 kPa and 10 kPa (Field Capacity) and dry-end soil water content at Air-Dryness (100 MPa). A ceramic plate and hanging water column is used for the wet end, while the dry end is measured using a dew point potentiometer (Decagon WP4-T). Soil water content at 33 kPa (Field Capacity) and 1500 kPa (Permanent Wilting Point) can be included with selection of SS-SING-247.</p> <p>Note: 1-2 kg of loose soil is required (more for coarser textured material) and a target Bulk Density value must be provided by the client.</p>	\$305.00	\$335.50
SS-SING-121	<p>Water Holding Capacity (WHC) under AS3743</p> <p>Note: 2 kg of sample is required to complete testing.</p>	\$20.00	\$22.00
SS-SING-197	<p>Water repellence of soil - Test Method Q160</p>	\$15.00	\$16.50
SS-SING-182	<p>Wettability under AS4419</p>	\$20.00	\$22.00
SS-SING-072	<p>Wettability under AS4454/AS3743</p>	\$20.00	\$22.00

ITEM CODE	MOISTURE CONTENT TESTS	PRICE excl. GST	PRICE incl. GST
SS-SING-221	<p>Air Dry Moisture Content - ADMC (%) at 105 °C.</p> <p>Moisture content of an air-dry (40°C) sample, further dried to 105 °C (oven-dry equivalent).</p>	\$10.00	\$11.00
SS-SING-225	<p>Dry Matter Content (%) at 105 °C</p> <p>Proportion of oven-dry solid in a 'as-received' sample (105 °C).</p>	\$10.00	\$11.00
SS-SING-001	<p>Moisture Content - As Received (%) at 105 °C</p> <p>Oven-dry moisture content as a per cent of the 'as-received' sample (105 °C).</p>	\$10.00	\$11.00
SS-SING-233	<p>Moisture Content - As Received (%) at 40 °C</p> <p>Moisture content as a per cent of air-dry equivalent soil (40 °C).</p>	\$10.00	\$11.00
SS-SING-222	<p>Moisture Content - As Received (%) Gravimetric at 105 °C</p> <p>Soil moisture as a per cent of dry mass at 105 °C (oven-dry equivalent).</p>	\$10.00	\$11.00
SS-PREP-007	<p>Total Dry Weight - Air dry basis</p> <p>Mass of the sample dried at 40 °C.</p>	\$6.00	\$6.60
SS-PREP-017	<p>Total Dry Weight - Oven dry basis</p> <p>Mass of the sample dried at 105 °C. Used to calculate bulk density when cores are supplied.</p>	\$6.00	\$6.60

Physical Parameters Price List - Edition: 20.1.3

ITEM CODE	BULK DENSITY TESTS	PRICE excl. GST	PRICE incl. GST
SS-PREP-021	Bulk Density - Lab Based Bulk Density – Lab based compacting of a supplied loose soil/sediment to a set volume, to simulate equivalent field conditions – note for the most accurate method use field bulk density rings of known volume with SS-PREP-017 for total oven dry weight.	\$10.00	\$11.00
SS-SING-183	Bulk Density under AS4419 Lab based bulk density on landscape soils. Note: 1 kg of sample is required to complete testing.	\$20.00	\$22.00
SS-SING-139	Bulk Density under AS4454/AS3743 Lab based bulk density on compost and potting mix. Note: 1 kg of sample is required to complete testing.	\$20.00	\$22.00

ITEM CODE	COLOUR AND TEXTURE	PRICE excl. GST	PRICE incl. GST
SS-SING-218	Colour (Munsell Soil Colour Classification)	\$8.00	\$8.80
SS-SING-086	Texture - Australian Soil Classification (Isbell and NCST, 2016)	\$20.00	\$22.00
SS-SING-164	Texture - Full (AS4419)	\$20.00	\$22.00
SS-SING-208	Texture - Full (NCST, 2009) This method is used for acid sulfate soil action criteria.	\$20.00	\$22.00

Individual tests may require sample preparation.

ITEM CODE	PHYSICAL CONTAMINANTS TESTS	PRICE excl. GST	PRICE incl. GST
SS-SING-127	Contamination Foreign Material Fraction Percentage Includes Fraction % (metal, plaster, rubber, plastic, paper, cloth, paint, wood, other vegetable matter).	\$30.00	\$33.00
SS-SING-228	Physical Contaminants under AS4419:2018 Applies to soil types as identified by AS4419:2018. Includes contamination with glass, metal, rigid plastics, light flexible film plastics. Note: 2 kg of sample is required to complete testing.	\$40.00	\$44.00
SS-SING-245	Vermicast Sieve Test under AS4454:2012 Includes percentage mass retained on 1.18 mm sieve. Note: 1 kg of sample is required to complete testing.	\$40.00	\$44.00
SS-SING-122	Visible Contaminants under AS4454 Applies to composts from agricultural or source separated organics. Includes contamination with glass, metal, rigid plastics, stones, lumps of clay, light flexible film plastics. Note: 2 kg of sample is required to complete testing.	\$40.00	\$44.00

SOLIDS ANALYTICAL SERVICES

GENERAL SOLIDS TESTING

All packs have preparation and digest/extract charge included.

ITEM CODE	SOLIDS SUITES	PRICE excl. GST	PRICE incl. GST
SS-PACK-015	Aggressivity Assessment Includes Moisture, Basic Texture; pH, EC, Resistivity (calculation), Soluble Chloride, Sulfate.	\$70.00	\$77.00
SS-PACK-111	Biochar Totals Analysis Includes Moisture Content, Ash Content; pH, EC (1:10 water); Total Nitrogen (TN), Total Carbon (TC), Total Organic Carbon (TOC), TC/TN Ratio, Organic Matter; Total Sodium, Potassium, Calcium, Magnesium, Phosphorus, Sulfur, Silicon, Cobalt, Molybdenum, Zinc, Manganese, Iron, Copper, Boron; Heavy Metals Silver, Arsenic, Lead, Chromium, Nickel, Cadmium, Mercury; Acid Neutralising Capacity (ANC). Note: 200 g of sample is required to complete testing.	\$200.00	\$220.00
SS-PACK-053	Concrete Quality Analysis Includes Chloride and Sulfate.	\$80.00	\$88.00
SS-PACK-034	DTPA Extractable Micronutrients Includes Iron, Copper, Zinc, Manganese.	\$40.00	\$44.00
SS-PACK-048	Gypsum Assessment - Soil Includes Moisture Content, Calcium, Magnesium, Sodium and Sulfur.	\$80.00	\$88.00
SS-PACK-049	Lime Assessment - Soil Includes Moisture Content, Calcium, Magnesium, Acid Neutralising Capacity (ANC-BT) and Neutralising Value.	\$90.00	\$99.00
SS-PACK-036	Mehlich III Exchangeable Cations Includes Mehlich III Extractable Sodium, Potassium, Calcium, Magnesium, Phosphorus.	\$40.00	\$44.00
SS-PACK-037	Mehlich III Exchangeable Cations and Micronutrients Includes Mehlich III Extractable Sodium, Potassium, Calcium, Magnesium, Phosphorus, Sulfur, Aluminium, Iron, Copper, Zinc, Manganese, Boron.	\$60.00	\$66.00
SS-PACK-141	Microbial Biomass Assessment - Compost Includes biomasses of 12 microbial groups relevant for compost quality, health and function.	\$299.00	\$328.90
SS-PACK-140	Microbial Biomass Assessment - Soil Includes biomasses of 12 microbial groups relevant for soil quality, health and function.	\$259.00	\$284.90
SS-PACK-038	Micro-nutrient Extract by CaCl₂ Includes Plant available Boron, Silica.	\$20.00	\$22.00
SS-PACK-010	pH and EC Includes soil pH and EC (1:5 water).	\$25.00	\$27.50
SS-PACK-089	Sand Mound Media Assessment Includes Dry sieving for fractions > 2 mm, 1-2 mm, 0.5-1 mm, 0.25-0.5 mm, 0.125-0.25 mm, 0.074-0.125 mm, < 0.074 mm; Hydrometer for < 2 µm fraction; Total Carbon (TC), Total Organic Carbon (TOC), Total Inorganic Carbon (TIC), Shell Content (%CaCO ₃) (calculation), Organic Matter (%) (calculation); Cleanliness (Total Inorganic Carbon + Organic Matter + Clay) (calculation).	\$180.00	\$198.00

Full Analytical Services Price List - Edition: 20.1.3

All packs have preparation and digest/extract charge included.

ITEM CODE	SOLIDS SUITES (CONT.)	PRICE excl. GST	PRICE incl. GST
SS-PACK-143	Soil Testing for Biochar Application Includes Moisture, pH, EC (1:5 water); Total Organic Carbon (TOC), Total Nitrogen (TN), TC/TN Ratio; Available Nitrogen (Nitrate); Soluble Chloride; Total Metals (Sb, As, Be, B, Cd, Co, Cu, Cr, Pb, Mn, Mo, Ni, Se, Sn, V, Zn, S, P, Hg); Soluble Cations (Ca, Mg, K, Na). Note: 300 g of sample is required to complete testing.	\$205.00	\$225.50
SS-PACK-035	SOUR Test Includes Moisture, Volatile Solids Concentration, Specific Oxygen Uptake Rate (SOUR) with an incubation of 20 °C.	\$100.00	\$110.00
SS-PACK-110	Total NPK Analysis Includes Total Nitrogen, Total Phosphorus, Total Potassium.	\$60.00	\$66.00

ITEM CODE	SOLIDS PREPARATIONS	PRICE excl. GST	PRICE incl. GST
SS-PREP-010	Acid Sulfate Soil - Sample Preparation - Required for all individual testing Includes 80 °C moisture content, drying and ring mill grinding. Required for all samples analysed on a dry weight basis.	\$10.00	\$11.00
SS-PREP-021	Bulk Density - Lab Based Bulk Density – Lab based compacting of a supplied loose soil/sediment to a set volume, to simulate equivalent field conditions – note for the most accurate method use field bulk density rings of known volume with SS-PREP-017 for total oven dry weight.	\$10.00	\$11.00
SS-PREP-015	Exchangeable Cation Pre-treatment for Soluble Salts Includes pretreatment with aqueous ethanol and aqueous glycerol to remove soluble salts. Recommended on soils with EC > 0.3 dS/m.	\$10.00	\$11.00
SS-PREP-020	Exchangeable Cation Suppression of Carbonates Includes pretreatment with aqueous ethanol and aqueous glycerol to remove soluble salts then extraction with 1 M Alcoholic NH ₄ Cl to suppress solid phase carbonates. Testing according to Method 15C1 with other agricultural tests.	\$40.00	\$44.00
SS-PREP-014	Fertiliser Handling Charge	\$50.00	\$55.00
SS-PREP-016	Fizz Test for Carbonates This method is used to indicate the presence of carbonates.	\$3.00	\$3.30
SS-PREP-002	Hotblock Digest Includes total Aqua-Regia or Nitric Acid digestion of solid samples.	\$10.00	\$11.00
SS-PREP-013	International Quarantine Handling Charge	\$70.00	\$77.00
SS-PREP-003	Leaching Includes 1:10 solid/water leaching with filtration.	\$6.00	\$6.60
SS-PREP-009	Leaf Washing Please advise with samples.	\$5.00	\$5.50
SS-PREP-008	Microwave Digest	\$15.00	\$16.50
SS-PREP-019	Repacking to Target Bulk Density	\$105.00	\$115.50
SS-PREP-004	Sample Compositing Includes sample compositing and storage of individual samples for at least two months to allow for individual testing if required. Charge per individual sample used in the composite.	\$4.00	\$4.40
SS-PREP-023	Sample Compositing for Soil Carbon Subsoils (30-100 cm) Includes compositing charge for composite subsoil samples tested under 2018 CFI methodology.	\$35.00	\$38.50
SS-PREP-022	Sample Compositing for Soil Carbon Topsoils (0-30 cm) Includes compositing charge for composite topsoil samples tested under 2018 CFI methodology.	\$15.00	\$16.50

Full Analytical Services Price List - Edition: 2020-1

ITEM CODE	SOLIDS PREPARATIONS (CONT.)	PRICE excl. GST	PRICE incl. GST
SS-PREP-001	Sample Preparation Includes drying and ring mill grinding.	\$10.00	\$11.00
SS-PREP-012	Sample Storage of Fresh Samples Includes sample storage of supplied samples (1st month storage is free) for up to 12 months at \$10.00 per month.	\$10.00	\$11.00
SS-PREP-018	Saturated Paste Extract Includes extraction of saturated paste (14A3). Please select required analytical parameters from the waters codes.	\$50.00	\$55.00
SS-PREP-005	TCLP Extractions Toxicity Characteristic Leaching Procedure.	\$45.00	\$49.50

Single tests may require sample preparation.

ITEM CODE	INDIVIDUAL SOLIDS TESTS	PRICE excl. GST	PRICE incl. GST
SS-SING-090	Acid Neutralising Capacity (ANC-BT) This method is used to measure Acid Neutralising Capacity (ANC-BT) where pH-KCl > 6.5.	\$30.00	\$33.00
SS-SING-201	Acid Neutralising Capacity by Total Inorganic Carbon (C-IN) This method is used to measure Acid Neutralising Capacity (ANC) where the pH-KCl > 6.5.	\$45.00	\$49.50
SS-SING-149	Arsenic - Total Includes sample preparation / acid digest and analysis by ICPMS.	\$30.00	\$33.00
SS-SING-063	Asbestos Identification (Not Quantifiable) Identification in building material, soil, compost and dust.	\$70.00	\$77.00
SS-SING-161	Asbestos Identification and Quantification in Soil Identification and quantification in soil (using AS4964-2004 or WA/NEPM) (% ACM, % Friable).	\$80.00	\$88.00
SS-SING-021	Ash Content by Combustion Includes moisture content and ash content by combustion.	\$20.00	\$22.00
SS-SING-155	Ash Content by Combustion - Routine and Acid Insoluble Includes standard Ash content by combustion then treatment of filter with hydrochloric acid and re-ashing.	\$35.00	\$38.50
SS-SING-134	Boron - CaCl Available	\$16.00	\$17.60
SS-SING-160	Brix Reading	\$10.00	\$11.00
SS-SING-038	Chloride - Soluble	\$15.00	\$16.50
SS-SING-153	Cyanide - Free	\$45.00	\$49.50
SS-SING-148	Cyanide - Total	\$60.00	\$66.00
SS-SING-225	Dry Matter Content (%) at 105 °C Proportion of oven-dry solid in a 'as-received' sample (105 °C).	\$10.00	\$11.00
SS-SING-071	Fertility Report - Keycrobe Soil /Leaf Report Preparation	\$30.00	\$33.00
SS-SING-067	Fluoride - Extractable	\$30.00	\$33.00
SS-SING-147	Fluoride - Total by fusion	\$70.00	\$77.00
SS-SING-125	Inorganic Carbon by Acid Neutralising Capacity (ANC-BT)	\$30.00	\$33.00
SS-SING-022	Iodine - NaOH Extraction	\$70.00	\$77.00
SS-SING-150	Lead - Total Includes sample preparation, acid digest and analysis by ICPMS.	\$30.00	\$33.00
SS-SING-001	Moisture Content - As Received (%) at 105 °C Oven-dry moisture content as a per cent of the 'as-received' sample (105 °C).	\$10.00	\$11.00

Full Analytical Services Price List - Edition: 2020-1

Single tests may require sample preparation.

ITEM CODE	INDIVIDUAL SOLIDS TESTS (CONT.)	PRICE excl. GST	PRICE incl. GST
SS-SING-233	Moisture Content - As Received (%) at 40 °C Moisture content as a per cent of air-dry equivalent soil (40 °C).	\$10.00	\$11.00
SS-SING-068	Neutralising Value Includes Acid Neutralising Capacity - Carbonate.	\$30.00	\$33.00
SS-SING-138	Organic Matter Includes Total Organic Carbon and organic matter by calculation.	\$25.00	\$27.50
SS-SING-070	Paint Analysis for Lead	\$30.00	\$33.00
SS-SING-069	Paramagnetism	\$10.00	\$11.00
SS-SING-084	Phosphorus Buffer Index (PBI) - Colwell corrected Includes Phosphorus Buffer Index (PBI) and is corrected using Colwell Phosphorus.	\$30.00	\$33.00
SS-SING-083	Potassium - BSES Nitric	\$22.50	\$24.75
SS-SING-076	Potassium - Colwell	\$15.00	\$16.50
SS-SING-141	Potassium - Hydrochloric Acid Extractable	\$20.00	\$22.00
SS-SING-151	Potassium - TBK	\$50.00	\$55.00
SS-SING-136	Protein (Crude) Includes Total Nitrogen (TN) and Crude Protein (Calculation).	\$30.00	\$33.00
SS-SING-131	Redox Potential	\$12.00	\$13.20
SS-SING-028	Scanning Electron Microscopy (SEM) - Sample Feasibility Assessment Includes sample preparation and instrument setup. A quote for analysis is provided following Sample Feasibility Assessment.	\$360.00	\$396.00
SS-SING-080	Silicon - BSES Acid Soluble	\$15.00	\$16.50
SS-SING-078	Silicon - BSES Available	\$15.00	\$16.50
SS-SING-135	Silicon - CaCl₂ Available	\$15.00	\$16.50
SS-SING-081	Sulfur - KCl-40	\$15.00	\$16.50
SS-SING-082	Sulfur - MCP	\$15.00	\$16.50
SS-SING-124	Sulfur - Morgan	\$22.00	\$24.20
SS-SING-144	Total Sulfur (TS) by LECO	\$20.00	\$22.00
SS-SING-010	X-ray Diffraction (XRD) Identification - excluding clay minerals Includes identification of minerals and mineral assemblages. Price dependent upon application and sample amounts. Price does NOT include clay identification.	\$150.00	\$165.00
SS-SING-031	X-ray Fluorescence (XRF) Includes total elemental concentration of elements with atomic weight greater than Oxygen. Price dependent upon application and sample amounts. Price includes Total Carbon (TC) and Total Nitrogen (TN) by LECO.	\$90.00	\$99.00
SS-SING-079	Zinc - BSES HCl	\$17.50	\$19.25

BIOSOLID AND CARBON TESTING

All packs have preparation and digest/extract charge included.

ITEM CODE	BIOSOLID SUITES	PRICE excl. GST	PRICE incl. GST
BS-PACK-001	Contaminated Grade Assessment Includes Total Dry Solids Concentration, Metals Analysis Arsenic, Cadmium, Chromium, Copper, Lead, Mercury, Nickel, Selenium, Zinc; Low Level (Organo-chlorines Pesticides (OC), Polychlorinated biphenyls (PCB)).	\$230.00	\$253.00
BS-PACK-004	Enteric Viruses Determination Includes Reovirus, Enterovirus, Adenovirus (viruses per 4 g).	\$420.00	\$462.00
BS-PACK-006	Enteric Viruses Determination plus Helminth Ova Includes Reovirus, Enterovirus, Adenovirus (viruses per 4 g) plus Helminth Ova.	\$500.00	\$550.00
BS-PACK-002	Nutrient Determination Includes Total Nitrogen (TN), Total Kjeldahl Nitrogen (TKN) (calculation), Ammonium, Nitrate.	\$60.00	\$66.00
BS-PACK-005	SOUR Test Includes Moisture, Volatile Solids Concentration, Specific Oxygen Uptake Rate (SOUR) with an incubation of 20 °C.	\$100.00	\$110.00
BS-PACK-003	Stabilisation Confirmation Includes Moisture, Microbial Assessment (E.Coli, Faecal Coliforms, and Salmonella sp.), Volatile Solids Concentration, Specific Oxygen Uptake Rate (SOUR).	\$200.00	\$220.00

All packs have preparation and digest/extract charge included.

ITEM CODE	CARBON SUITES	PRICE excl. GST	PRICE incl. GST
SS-PACK-020	Carbon Stability Includes Total Carbon (TC), Labile Carbon.	\$50.00	\$55.00
SS-PACK-011	LECO - Total Carbon and Total Nitrogen Includes Total Carbon (TC) and Total Nitrogen (TN), TC/TN Ratio.	\$25.00	\$27.50
SS-PACK-088	LECO - Total Carbon and Total Sulfur Includes Total Carbon (TC) and Total Sulfur (TS) (LECO SC832).	\$25.00	\$27.50
SS-PACK-012	LECO - Total Carbon, Total Nitrogen and Total Sulfur Includes Total Carbon (TC) and Total Nitrogen (TN), Total Sulfur (TS), TC/TN Ratio.	\$35.00	\$38.50

Single tests may require sample preparation.

ITEM CODE	INDIVIDUAL CARBON TESTS	PRICE excl. GST	PRICE incl. GST
SS-SING-018	Carbon - Labile	\$17.50	\$19.25
SS-SING-062	Carbon - Organic by Walkley Black	\$30.00	\$33.00
SS-SING-061	Carbon - Total Organic by LECO	\$25.00	\$27.50
SS-SING-059	Inorganic (Carbonate) Carbon by LECO Includes Total Carbon (TC), Total Organic Carbon (TOC).	\$45.00	\$49.50
SS-SING-125	Inorganic Carbon by Acid Neutralising Capacity (ANC-BT)	\$30.00	\$33.00
SS-SING-060	Total Carbon by LECO	\$20.00	\$22.00

EXCHANGEABLE CATIONS TESTING

All packs have preparation and digest/extract charge included.

ITEM CODE	EXCHANGEABLE CATIONS SUITES	PRICE excl. GST	PRICE incl. GST
SS-PACK-135	CEC-compulsive (true) - Cation-Exchange Capacity of soils (Sodium Acetate) Includes CEC using USEPA SW-846 test method 9081 after pre-treatment for soluble salts.	\$100.00	\$110.00
SS-PACK-028	Exchangeable Acidity - 15G1 - 1 M KCl Includes exchangeable acidity (Hydrogen + Aluminium) by 1 M KCl.	\$20.00	\$22.00
SS-PACK-074	Exchangeable Cations - 15A1 - 1 M NH4Cl Includes exchangeable Sodium, Potassium, Calcium, Magnesium by 1 M NH4Cl at pH 7.0. No pre-treatment for soluble salts.	\$40.00	\$44.00
SS-PACK-075	Exchangeable Cations - 15A2 - 1 M NH4Cl Includes exchangeable Sodium, Potassium, Calcium, Magnesium by 1 M NH4Cl at pH 7.0. Pretreatment for soluble salts when EC is > 0.3 dS/m.	\$50.00	\$55.00
SS-PACK-029	Exchangeable Cations - 15A3 - 1 M NH4Cl Includes exchangeable Sodium, Potassium, Calcium, Magnesium by 1 M NH4Cl at pH 7.0. When EC is > 0.3 dS/m soluble Chloride is analysed to adjust the exchangeable sodium.	\$55.00	\$60.50
SS-PACK-076	Exchangeable Cations - 15B1 - 1 M NH4Cl Includes exchangeable Sodium, Potassium, Calcium, Magnesium by 1 M NH4Cl at pH 7.0. No pre-treatment for soluble salts.	\$40.00	\$44.00
SS-PACK-077	Exchangeable Cations - 15B2 - 1 M NH4Cl Includes exchangeable Sodium, Potassium, Calcium, Magnesium by 1 M NH4Cl at pH 7.0. Pretreatment for soluble salts when EC is > 0.3 dS/m.	\$50.00	\$55.00
SS-PACK-078	Exchangeable Cations - 15B3 - 1 M NH4Cl Includes exchangeable Sodium, Potassium, Calcium, Magnesium by 1 M NH4Cl at pH 7.0. When EC is > 0.3 dS/m soluble Chloride is analysed to adjust the exchangeable sodium.	\$55.00	\$60.50
SS-PACK-027	Exchangeable Cations - 15C1 - Alcoholic 1 M NH4Cl Includes exchangeable Sodium, Potassium, Calcium, Magnesium by Alcoholic 1 M NH4Cl at pH 8.5. Ideal for soils where pH > 7.3.	\$70.00	\$77.00
SS-PACK-026	Exchangeable Cations - 15D1 - 1 M NH4OAc Includes exchangeable Sodium, Potassium, Calcium, Magnesium by 1 M NH4OAc at pH 7.0. Pretreatment for soluble salts when EC is > 0.3 dS/m.	\$50.00	\$55.00
SS-PACK-041	Exchangeable Cations - 15D3 - 1 M NH4OAc Includes exchangeable Sodium, Potassium, Calcium, Magnesium by 1 M NH4OAc at pH 7.0. No pre-treatment for soluble salts.	\$40.00	\$44.00
SS-PACK-001	Exchangeable Cations - 15D3 - 1 M NH4OAc plus Acidity (15G1) Includes exchangeable Sodium, Potassium, Calcium, Magnesium by 1 M NH4OAc at pH 7.0 and exchangeable acidity (Hydrogen + Aluminium) by 1 M KCl.	\$50.00	\$55.00
SS-PACK-136	Exchangeable Cations – 15E1 - CEC & AEC (no pre-treatment) Includes exchangeable Sodium, Potassium, Calcium, Magnesium, compulsive Cation Exchange Capacity (CEC) and Anion Exchange Capacity (AEC) with no pre-treatment for soluble salts.	\$150.00	\$165.00
SS-PACK-137	Exchangeable Cations – 15E2 - CEC & AEC (with pre-treatment) Includes exchangeable Sodium, Potassium, Calcium, Magnesium, compulsive Cation Exchange Capacity (CEC) and Anion Exchange Capacity (AEC) with pre-treatment for soluble salts.	\$160.00	\$176.00
SS-PACK-061	Exchangeable Cations - 15F1 - 0.01 M AgTU+ Includes exchangeable Sodium, Potassium, Calcium, Magnesium by 0.01 M AgTU+.	\$45.00	\$49.50
SS-PACK-079	Exchangeable Cations - 15F1/15F2 - 0.01 M AgTU+ Includes exchangeable Sodium, Potassium, Calcium, Magnesium, Aluminium by 0.01 M AgTU+.	\$55.00	\$60.50

METALS TESTING

All packs have preparation and digest/extract charge included.

ITEM CODE	METALS SUITES	PRICE excl. GST	PRICE incl. GST
SS-PACK-004	Basic Metals Scan - Total Acid Extractable (ICPMS) Includes Aluminium, Arsenic, Beryllium, Boron, Cadmium, Chromium, Cobalt, Copper, Iron, Lead, Manganese, Mercury, Nickel, Selenium, Silver and Zinc.	\$70.00	\$77.00
SS-PACK-043	Extra Metals Scan - Total Acid Extractable (ICPMS) Includes Antimony, Barium, Bismuth, Lithium, Molybdenum, Silicon, Strontium, Thallium, Thorium, Uranium and Vanadium.	\$70.00	\$77.00
SS-PACK-050	Hair Tissue Mineral Analysis (HTMA) - Human and Animal Includes Antimony, Aluminium, Arsenic, Barium, Beryllium, Bismuth, Boron, Cadmium, Calcium, Chromium, Cobalt, Copper, Iron, Lead, Lithium, Magnesium, Manganese, Mercury, Molybdenum, Nickel, Phosphorus, Potassium, Selenium, Silver, Sodium, Strontium, Sulfur, Thallium, Thorium, Uranium, Vanadium and Zinc. Data only (no interpretation), Nitric Acid digest, minimum of 0.5 g of hair required which is equivalent to one heaped tablespoon. Collect from nape as close as possible to scalp as this reflects new growth. Provide sample double bagged to avoid contamination when opened at the laboratory.	\$80.00	\$88.00
SS-PACK-044	Salts Scan - Total Acid Extractable (ICPMS) Includes Calcium, Magnesium, Potassium, Sodium and Sulfur.	\$45.00	\$49.50
SS-PACK-046	Special - Metals and Salts Combo - Total Acid Extractable (ICPMS) Includes Basic (Aluminium, Arsenic, Cadmium, Chromium, Copper, Iron, Lead, Manganese, Mercury, Nickel, Selenium, Silver and Zinc); Extra (Antimony, Barium, Beryllium, Bismuth, Boron, Cobalt, Lithium, Molybdenum, Silicon, Strontium, Thallium, Thorium, Uranium and Vanadium) and Salts (Calcium, Magnesium, Potassium, Sodium and Sulfur).	\$120.00	\$132.00
SS-PACK-071	Speciated Antimony Includes toxic antimony species SbIII determination using HPLC-ICPMS (Total Antimony analysis also included to determine SbV).	\$400.00	\$440.00
SS-PACK-069	Speciated Arsenic Includes toxic arsenic species AsV determination using HPLC-ICPMS (Total Arsenic analysis also included to determine As III).	\$400.00	\$440.00
SS-PACK-070	Speciated Chromium Includes toxic hexavalent chromium species CrVI determination using HPLC-ICPMS (Total Chromium analysis also included to determine CrIII).	\$400.00	\$440.00
SS-PACK-068	Speciated Mercury Includes toxic mercury species Methyl Mercury determination using HPLC-ICPMS (Total Mercury analysis also included to determine HgII).	\$400.00	\$440.00
SS-PACK-031	Specific - Rare Earth - Total Acid Extractable (ICPMS) Includes Cerium, Dysprosium, Erbium, Europium, Gadolinium, Holmium, Lanthanum, Lutetium, Neodymium, Praseodymium, Samarium, Scandium, Terbium, Thorium, Thulium, Uranium, Ytterbium and Yttrium.	\$95.00	\$104.50
SS-PACK-032	Specific - TCLP Extractable (ICPMS) Includes Copper, Lead, Cadmium, Zinc, Arsenic, Selenium, Iron, Manganese, Silver, Chromium, Nickel, Aluminium, Mercury.	\$90.00	\$99.00
SS-PACK-045	Total Acid Extractable - Heavy Metals (ICPMS) Includes Lead, Cadmium, Arsenic, Nickel, Aluminium, Mercury, Chromium, Silver, Selenium.	\$50.00	\$55.00

General Solids Price List - Edition: 2020-1

All samples require Single tests may require sample preparation.

ITEM CODE	INDIVIDUAL METALS TESTS (CONT.)	PRICE excl. GST	PRICE incl. GST
SS-SING-132	<p>General Metals - ICPMS Price per element Aluminium, Antimony, Arsenic, Barium, Beryllium, Bismuth, Boron, Cadmium, Calcium, Chromium, Cobalt, Copper, Iron, Lead, Lithium, Magnesium, Manganese, Mercury, Molybdenum, Nickel, Phosphorus, Potassium, Selenium, Silicon, Silver, Sodium, Strontium, Sulfur, Thallium, Thorium, Uranium, Vanadium or Zinc.</p>	\$10.00	\$11.00
SS-SING-133	<p>Non-Standard Metals - ICPMS Price per element Cerium, Dysprosium, Erbium, Europium, Gadolinium, Gallium, Gold, Holmium, Lanthanum, Lutetium, Neodymium, Praseodymium, Rubidium, Samarium, Scandium, Terbium, Thulium, Tin, Titanium, Tungsten, Ytterbium or Yttrium.</p>	\$15.00	\$16.50
SS-SING-024	<p>Specific Metals - TCLP Extractable ICPMS Price per element Aluminium, Arsenic, Cadmium, Chromium, Copper, Iron, Lead, Manganese, Mercury, Nickel, Silver or Zinc.</p>	\$15.00	\$16.50

MICROBIAL AND NITROGEN TESTING

All packs have preparation and digest/extract charge included.

ITEM CODE	MICROBIAL SUITES	PRICE excl. GST	PRICE incl. GST
SS-PACK-141	Microbial Biomass Assessment - Compost Includes biomasses of 12 microbial groups relevant for compost quality, health and function.	\$299.00	\$328.90
SS-PACK-140	Microbial Biomass Assessment - Soil Includes biomasses of 12 microbial groups relevant for soil quality, health and function.	\$259.00	\$284.90
SS-PACK-059	Pathogens Includes Ecoli, Faecal Coliforms, Salmonella.	\$120.00	\$132.00

Single tests may require sample preparation.

ITEM CODE	INDIVIDUAL MICROBIAL TESTS	PRICE excl. GST	PRICE incl. GST
SS-SING-047	Aerobic Plate Count	\$40.00	\$44.00
SS-SING-044	E.Coli	\$40.00	\$44.00
SS-SING-043	Faecal Coliforms Helminth	\$40.00	\$44.00
SS-SING-203	Ova	\$260.00	\$286.00
SS-SING-046	Listeria	\$60.00	\$66.00
SS-SING-154	Phytophthora and Pythium	\$220.00	\$242.00
SS-SING-045	Salmonella	\$60.00	\$66.00
SS-SING-195	SOLVITA - Compost Emissions Maturity Test Includes measurement of carbon dioxide and ammonia gas released from compost due to biological activity.	\$60.00	\$66.00
SS-SING-209	SOLVITA - Soil CO₂ Burst Includes measurement of carbon dioxide released from soil due to biological activity.	\$60.00	\$66.00

All packs have preparation and digest/extract charge included.

ITEM CODE	NITROGEN SUITES	PRICE excl. GST	PRICE incl. GST
SS-PACK-019	Nutrients - KCl Extractable Includes Nitrate, Ammonium, Phosphate.	\$50.00	\$55.00
SS-PACK-033	Nutrients - Water Extractable Includes Nitrate, Phosphate, Ammonium.	\$50.00	\$55.00

Single tests may require sample preparation.

ITEM CODE	INDIVIDUAL NITROGEN TESTS	PRICE excl. GST	PRICE incl. GST
SS-SING-048	Ammonium - Water Extractable	\$30.00	\$33.00
SS-SING-152	Anaerobic Mineralisable Nitrogen Includes potentially mineralisable nitrogen before and after anaerobic incubation for 7 days.	\$50.00	\$55.00
SS-SING-049	Nitrate - Water Extractable	\$30.00	\$33.00
SS-SING-050	Total Nitrogen by LECO	\$20.00	\$22.00

PHOSPHORUS TESTING

All packs have preparation and digest/extract charge included.

ITEM CODE	PHOSPHORUS SUITES	PRICE excl. GST	PRICE incl. GST
SS-PACK-019	Nutrients - KCl Extractable Includes Nitrate, Ammonium, Phosphate.	\$50.00	\$55.00
SS-PACK-033	Nutrients - Water Extractable Includes Nitrate, Phosphate, Ammonium.	\$50.00	\$55.00

Single tests may require sample preparation.

ITEM CODE	INDIVIDUAL PHOSPHORUS TESTS	PRICE excl. GST	PRICE incl. GST
SS-SING-191	MEDLI Adsorption Isotherm Parameters Modelling (6 concentrations of Phosphorus), Colwell Phosphorus.	\$60.00	\$66.00
SS-SING-035	Phosphorus - Bray 1 Includes plant available Phosphorous for acid soils.	\$15.00	\$16.50
SS-SING-036	Phosphorus - Bray 2 Includes plant available and acid soluble forms of Phosphorous.	\$15.00	\$16.50
SS-SING-040	Phosphorus - BSES Acid Soluble	\$15.00	\$16.50
SS-SING-033	Phosphorus - Colwell Includes Phosphorus for alkaline soils.	\$15.00	\$16.50
SS-SING-143	Phosphorus - DGT	\$25.00	\$27.50
SS-SING-034	Phosphorus - Olsen Includes Olsen Phosphorous - a measure of the intensity of Phosphorus.	\$15.00	\$16.50
SS-SING-032	Phosphorus - Total Acid Extractable (includes preparation)	\$30.00	\$33.00
SS-SING-037	Phosphorus Buffer Index (PBI)	\$17.50	\$19.25
SS-SING-084	Phosphorus Buffer Index (PBI) - Colwell corrected Includes Phosphorus Buffer Index (PBI) and is corrected using Colwell Phosphorus.	\$30.00	\$33.00
SS-SING-087	Phosphorus Sorption (as mg P/kg - basic as per PBI)	\$17.50	\$19.25
SS-SING-039	Phosphorus Sorption Capacity Includes 1 day preliminary trial, 7 day sorption capacity trial (Ryden and Pratt, 1980), In situ Phosphorous and calculations.	\$80.00	\$88.00

STABLE ISOTOPES TESTING

Single tests may require sample preparation.

ITEM CODE	INDIVIDUAL STABLE ISOTOPE TESTS	PRICE excl. GST	PRICE incl. GST
SS-SING-118	Biomarker and Specific Compounds Includes delta13C and delta15N analysis. Price dependent upon application and sample amounts.	\$0.00	\$0.00
SS-SING-118	Biomarker and Specific Compounds Includes delta13C and delta15N analysis. Price dependent upon application and sample amounts.	\$0.00	\$0.00
SS-SING-116	Carbon Dioxide Without pre-concentration.	\$45.00	\$49.50
SS-SING-111	Carbon Suite Includes T13C/TI13C/DO13C in non-saline waters. Saline waters are quoted on request.	\$65.00	\$71.50
SS-SING-114	Dissolved Gas Analysis Includes N ₂ /Ar non-isotope ratio measurement.	\$40.00	\$44.00
SS-SING-110	Dissolved Inorganic Carbon (DIC)/Dissolved Organic Carbon (DOC) Includes Dissolved Inorganic Carbon (DIC)/Dissolved Organic Carbon (DOC) in non-saline waters.	\$50.00	\$55.00
SS-SING-112	Dissolved Nitrogen Includes Dissolved N ₂ - ratio masses 29/28 and 30/28.	\$75.00	\$82.50
SS-SING-113	Dissolved Nitrous Oxide	\$125.00	\$137.50
SS-SING-105	Dual Analysis of Total Carbon and Total Nitrogen Includes delta13C/delta15N (dual analysis) and % TC and % TN.	\$50.00	\$55.00
SS-SING-108	Filters delta13C/delta15N Includes delta13C/delta15N analysis of Filters (25 mm or smaller GFF quartz preferred) (charge per analyte, sample preparation included).	\$65.00	\$71.50
SS-SING-115	Hydrocarbons Includes Hydrocarbons (C1-C5). Cost per analyte.	\$40.00	\$44.00
SS-SING-117	Nitrogen Gas Without pre-concentration.	\$45.00	\$49.50
SS-SING-242	Solid Phase Organic Carbon Includes delta13Corg and % Corg of solid phase samples (includes acid treatment to remove inorganic carbon).	\$50.00	\$55.00
SS-SING-103	Solid Phase Total Carbon Includes delta13C and % C of solid phase samples (un-acidified).	\$40.00	\$44.00
SS-SING-104	Solid Phase Total Nitrogen Includes delta15N and % N of solid phase samples.	\$40.00	\$44.00
SS-SING-109	Total Inorganic Carbon (TIC)/Total Organic Carbon (TOC) Includes Total Inorganic Carbon(TIC)/Total Organic Carbon TOC) in non-saline waters.	\$50.00	\$55.00

NATA ACCREDITED TESTS (Lab Acc. No. 14960)



ID	Tests	Reference
S1	Soil pH and Electrical Conductivity	In-house (re R&L 3A1, 4A1)
S4a	Total C,N,S by Dumas in Soil and Plant	In-house (re R&L 6B2b, 7AS)
S8	DTPA – Cu,Zn,Mn,Fe	In-house (re R&L 12A1)
S9c	Exchangeable bases and CEC-1M Ammonium Acetate	In-house (re R&L 15D3)
S14	Acid Neutralising Capacity	In-house (re National Guidance NLM-5.2)
S15b	Total Organic Carbon in Soil by Dumas	In-house (re R&L 6B3)
S16b	Titrateable Actual Acidity	In-house (re National Guidance NLM-3.2)
S20	Chromium Reducible Sulfur	In-house (re National Guidance NLM-2.1)
S21	Acid Sulfate Soil pH-F and pH-FOX Testing	In-house (re National Guidance)
S38	Lead in Paint	In-house
W1	Turbidity	In-house
W4	Total N/Total P (Lachat)	In-house (re APHA 4500 P-H N-C)
W6	Nitrite in Waters (Lachat)	APHA 4500 NO3-I
W7	Nitrate in Waters (Lachat)	APHA 4500 NO3-F
W8	Ortho-Phosphate in Waters (Lachat)	APHA 4500 P-G
W9	Ammonia in Waters (Lachat)	APHA 4500 NH3-H
W25	Total Suspended Solids	APHA 2540-D
W26	BOD in Waters and Wastewaters	APHA 5210-B
W28a	Total Oils and Grease Automated	APHA 5520-D
W31	Water pH and Conductivity	APHA 4500-H & 2510-B
W32	ICPMS Metals Analysis in Soils and Waters (Al,Sb,As,Ba,Be,Bi,B,Cd,Ca,Cr,Co,Cu,Fe,Pb,Li, Mg,Mn,Hg,Mo,Ni,P,K,Se,Ag,Na, Sr,S,Tl,Th,Sn,U,V,Zn)	In-house (re APHA 3125)
W32a	Trace Metals in Saline Water (Al,As,Ba,Be,Bi,Cd,Cr,Co,Cu,Fe,Pb,Mn, Hg,Mo,Ni,Se,Ag,Tl,U,V,Zn)	In-house (re APHA 3125)
W33	Soluble Chlorine as Chloride in Waters	In-house (by ICPMS)

ASPAC TESTS (for Plant and Soil materials)



Soil tests	Reference
pH	R&L 4A1, 4B1, 4B2
Electrical Conductivity	R&L 3A1
Bray 1, Colwell, Olsen Phosphorus	R&L 9E2, 9B2, 9C2
Total Phosphorus	R&L 17C1
Exchangeable Cations – Ca,Mg,K,Na	R&L 15D3
Exchangeable Cations – H,Al	R&L 15G1
DTPA - Fe,Cu,Zn,Mn	R&L 12A1
Total Carbon & Nitrogen	R&L 6B2b, 7A5
Nitrate & Ammonium Nitrogen	R&L 7C2
Soluble Chloride	R&L 5A2
Extractable Boron	R&L 12C2
Extractable Sulfur	R&L 10D1
Phosphorus Buffer Index	R&L 9I2b
Mehlich – Ca,Mg,K,Na,Fe,Cu,Zn,Mn,PS,Al,B	R&L 18F1

Acid Sulfate Soil Tests	Reference
Chromium Reducible Sulfur	NLM-2.1
Potassium Chloride pH	NLM-3.1
Titrateable Actual Acidity	NLM-3.2
Potassium Chloride Extractable Sulfur	NLM-4.1
Peroxide Sulfur	NLM-2.2
4 M Hydrochloric Acid Extractable Sulfur	NLM-4.1
Acid Neutralising Capacity (BT)	NLM-5.1

Plant Tissue Tests	Reference
Total Nutrients (Ca,Mg,P,K,Na,Si,B,S,Cd,Co,Fe,Pb,Mn,Mo,Se,Zn)	AE-24
LECO – C,N,S	CA-37
Soluble Chloride	BB-32

Notes: R&L methods from Rayment & Lyons (2011). NLM methods from National Acid Sulfate Soils Guidance (2018). APHA methods from American Public Health Association (2017). See EAL website under 'About' for current scope of accreditation for NATA and ASPAC.