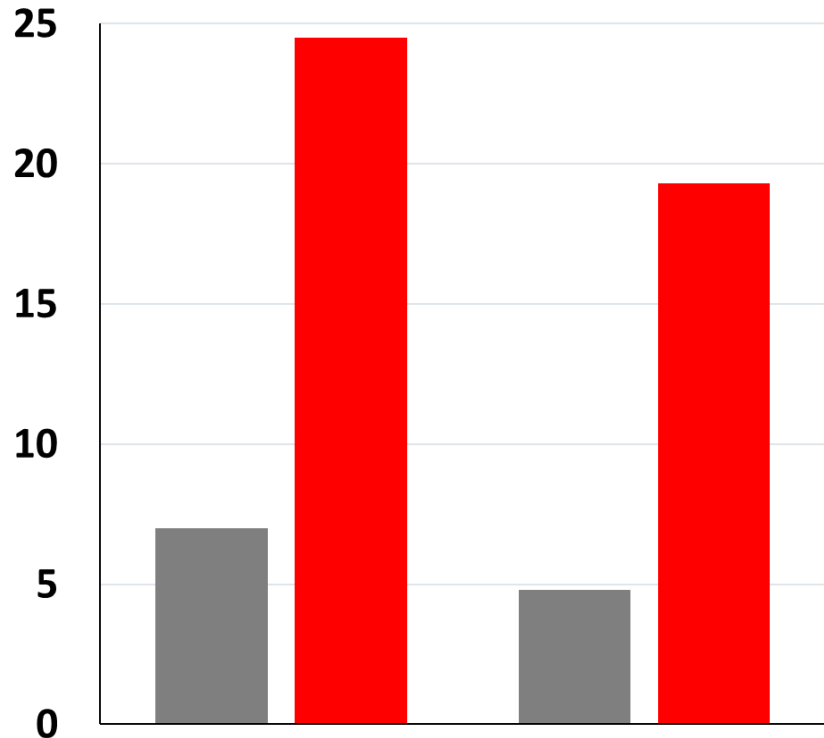


Diet and food type affect pesticide intake

Effect of changing diet based on conventionally produced foods

Intake ($\mu\text{g}/\text{day}$)



Insecticides

Organophosphates

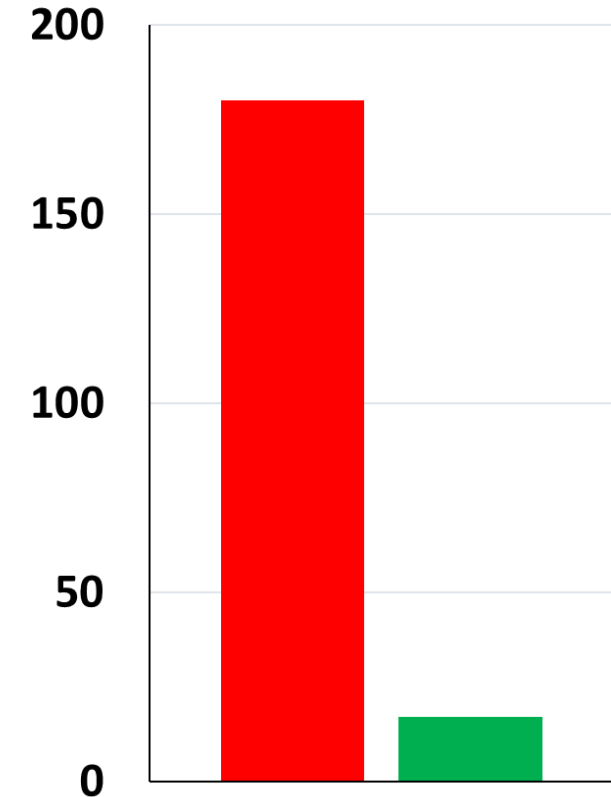
■ Habitual Western Diets

■ Traditional Mediterranean Diet



Effect of changing to organic food on a Mediterranean diet

Intake ($\mu\text{g}/\text{day}$)



All pesticides

■ conventional

■ organic