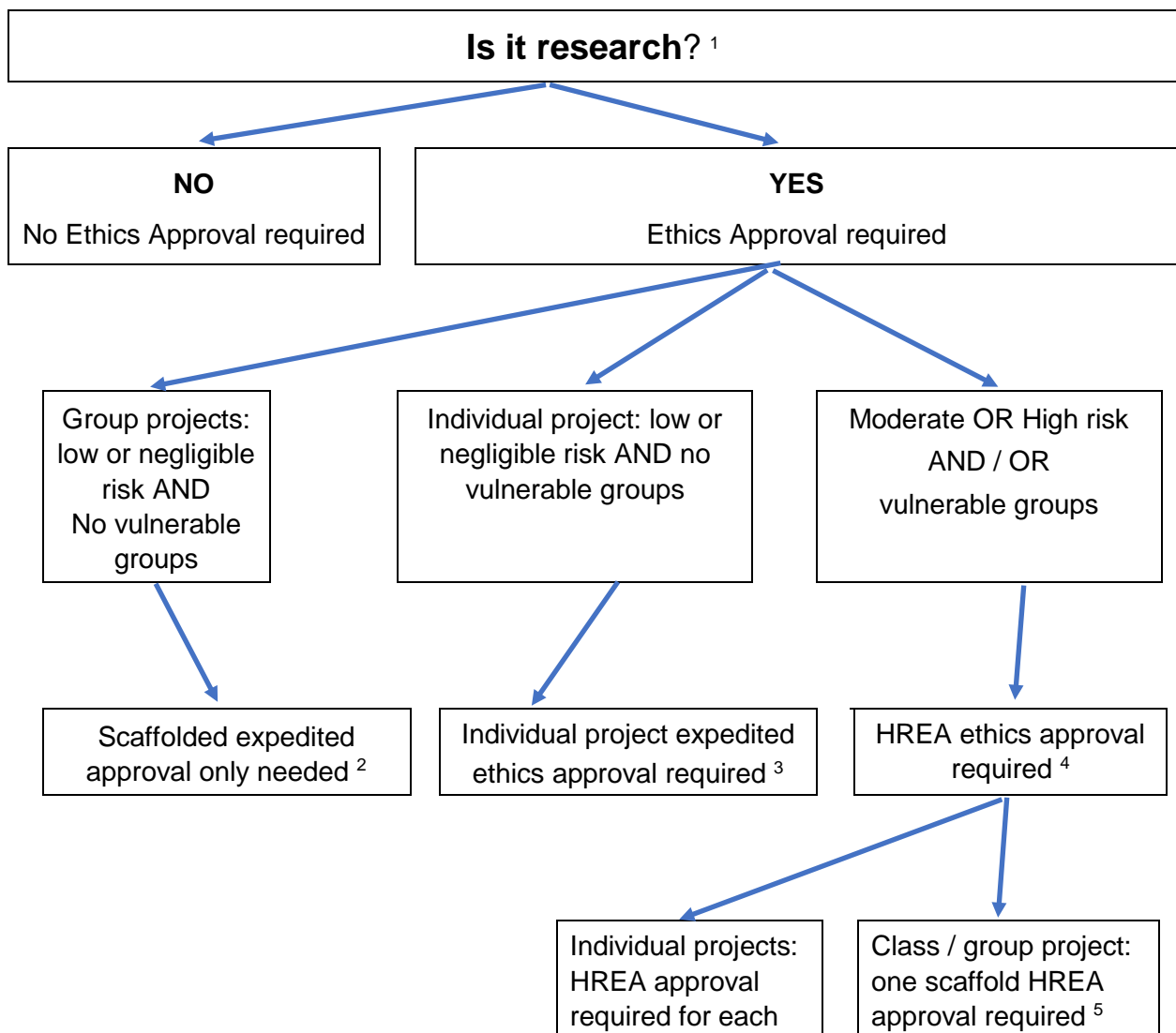


## Ethics approval for coursework activities flow chart



1. **Coursework activity is considered research if the answer to either of the following questions is 'Yes':**
  - a. Will the students recruit participants outside of the classroom for an interview or to complete a survey or to undertake some other activity?
  - b. Will students use secondary data to answer a specific research question?
2. Expedited Approval application for scaffolded approval to include a generic Participant Information Sheet and Participant Consent Form (Note: A Consent Form is not required for an anonymous survey”).
3. Expedited Approval application for individual approval to include a project-specific Participant Information Sheet and Participant Consent Form.
4. Human Research Ethics Application (HREA) form available from:  
<https://www.scu.edu.au/research/research-ethics/human-research-ethics/how-to-apply-for-human-ethics-approval/>.
5. Depending on the amount of freedom a student has within a group project, in some cases an individual HREA may be required.